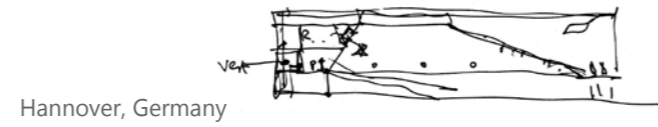


Spain's National Pavilion at World fair Expo 2000



REPORT

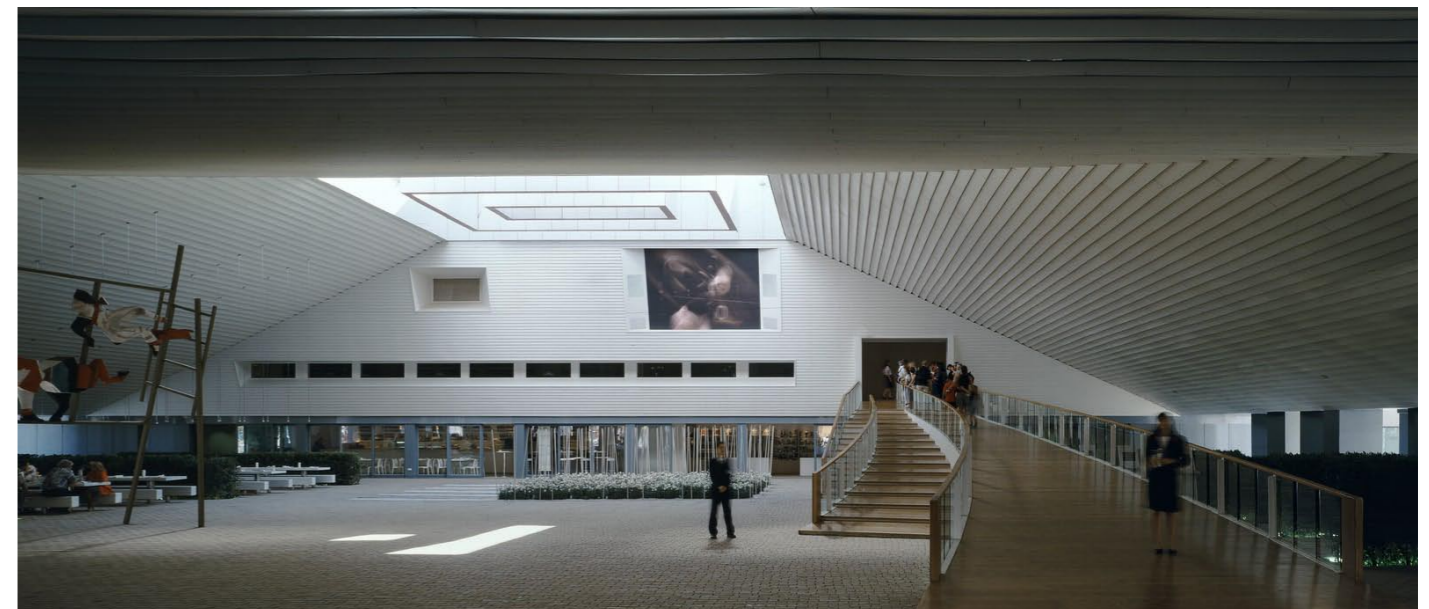
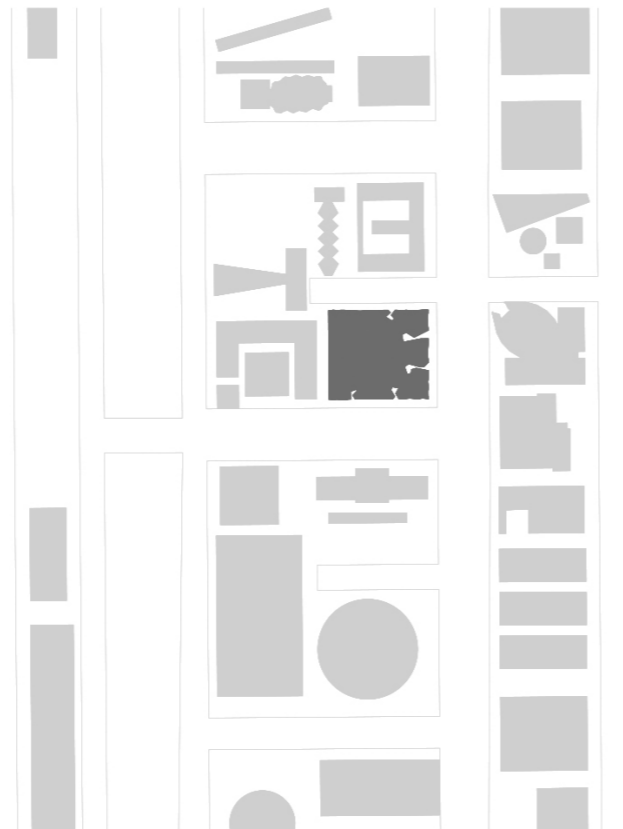
Contrasted with the immediacy that usually characterizes architecture at world exhibitions, the pavilion that represented Spain at Hannover Expo 2000, aimed to demand some time and a certain effort from the visitor in order to understand the building in full.

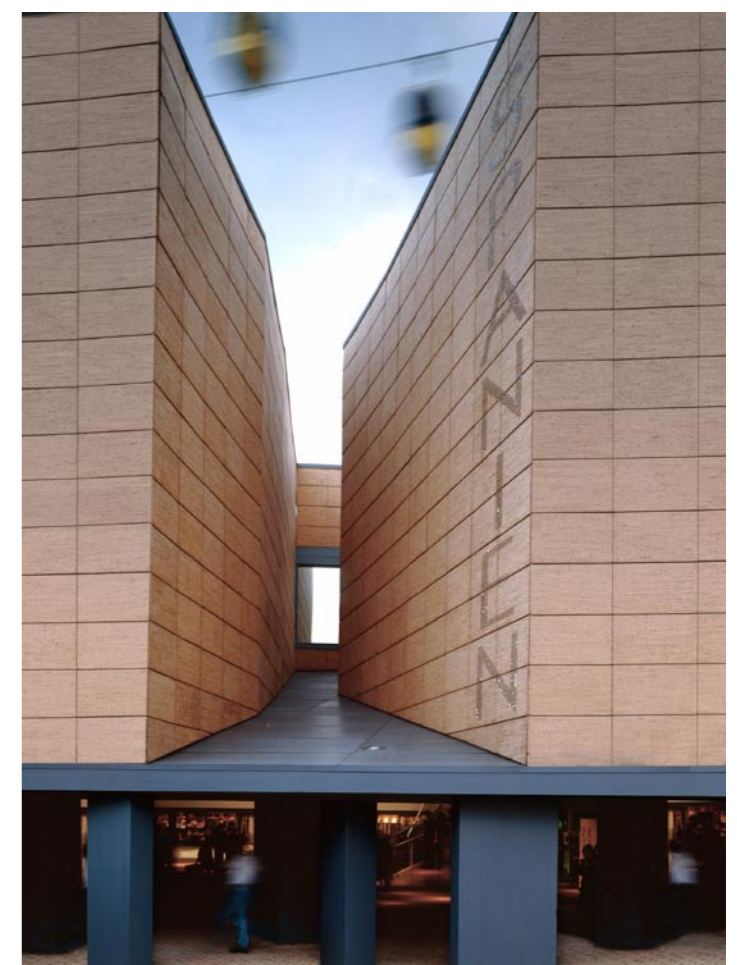
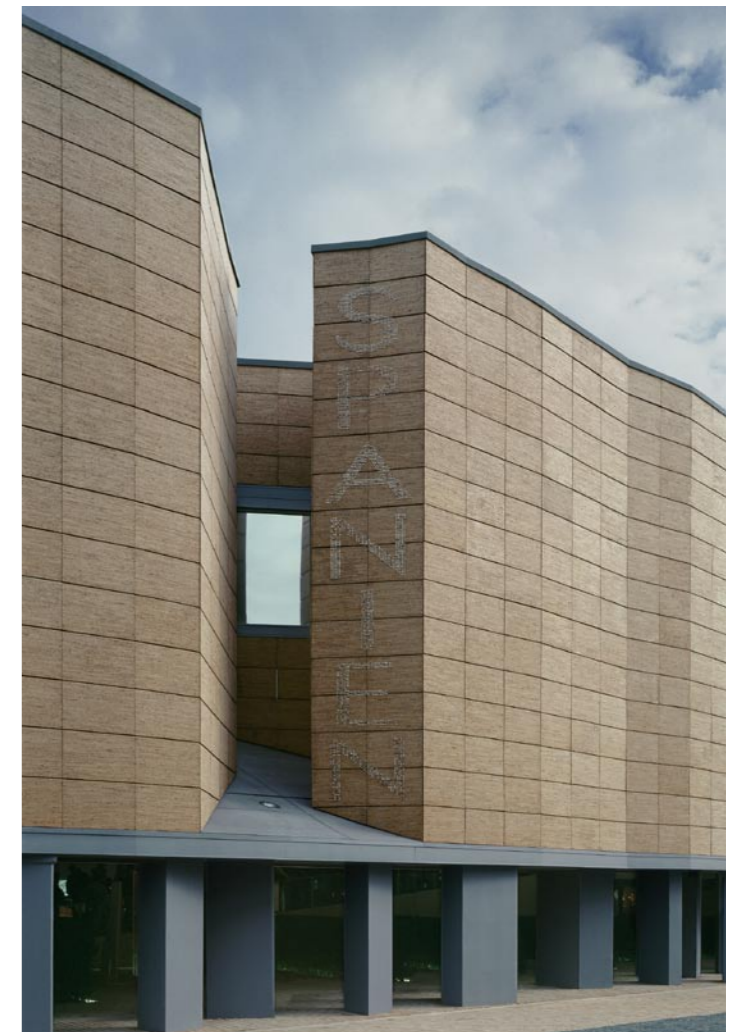
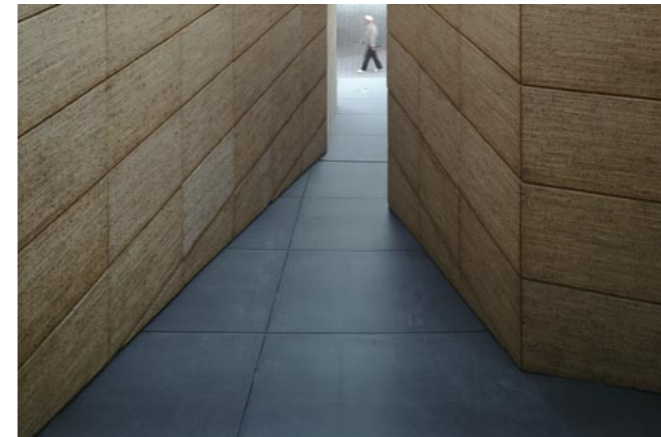
The first impression caused by the Spanish pavilion is that of a large block of cork, whose façades are disrupted by deep clefts; it is hermetic and introverted. The fragile and uncertain geometry of its exterior contrasts with the precision that rules the interior space. The ground floor, veiled from the exterior on three sides by numerous uneven and irregularly positioned pillars, acts as a public square. Having passed through these pillars, which support a low lintel, the visitor enters a wide-open space crowned by a generous skylight. Sheltered from weather conditions, the natural lighting and good acoustics will create an atmosphere of well-being, withdrawn from the hectic environment of a world fair.

This new space, unexpected and full of discovery, is meant to cause a lasting impression on the visitor's memory. On the exhibition level, those deep clefts through which it receives its natural lighting will remind the visitor of his first impression of the building.

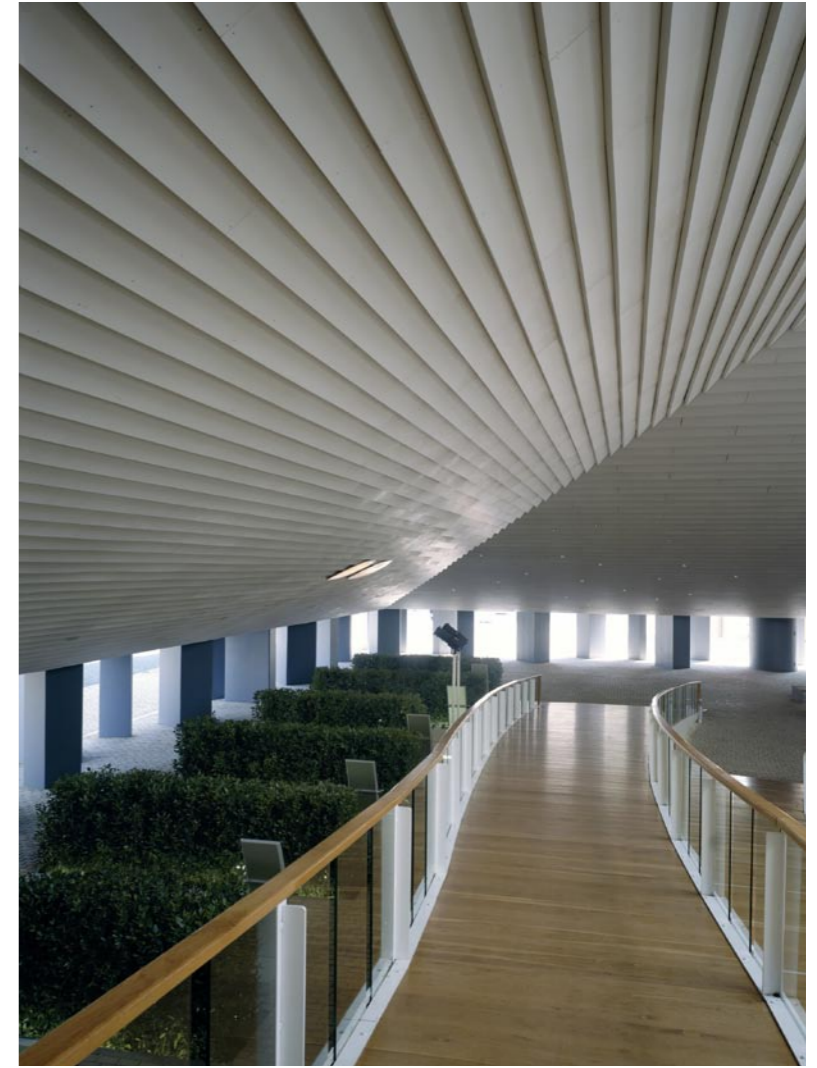
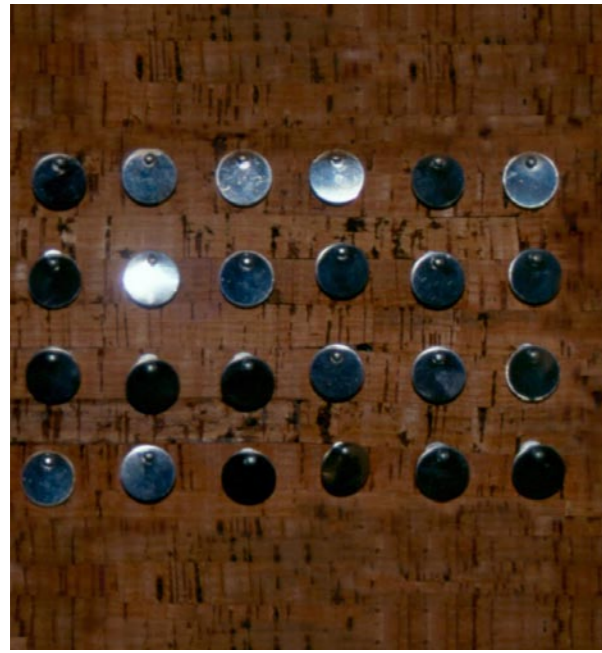
From a different point of view, a building environmental-friendly architecture was chosen as a voluntary option that fitted in the spirit of the Expo 2000, both through the election of materials and the building process: a building that after representing the country during the Exhibition, could be rebuilt at a different location, or be dismantled without leaving non-recyclable wastes.

Publication's title: Spain's National Pavilion at World fair Expo 2000, Hannover  
 Typology: Museums and Galleries, Education and Culture  
 Client: State Corporation Expo Hannover 2000  
 Surface: 10.774 m<sup>2</sup>  
 Year: 1999-2000  
 Status: Built



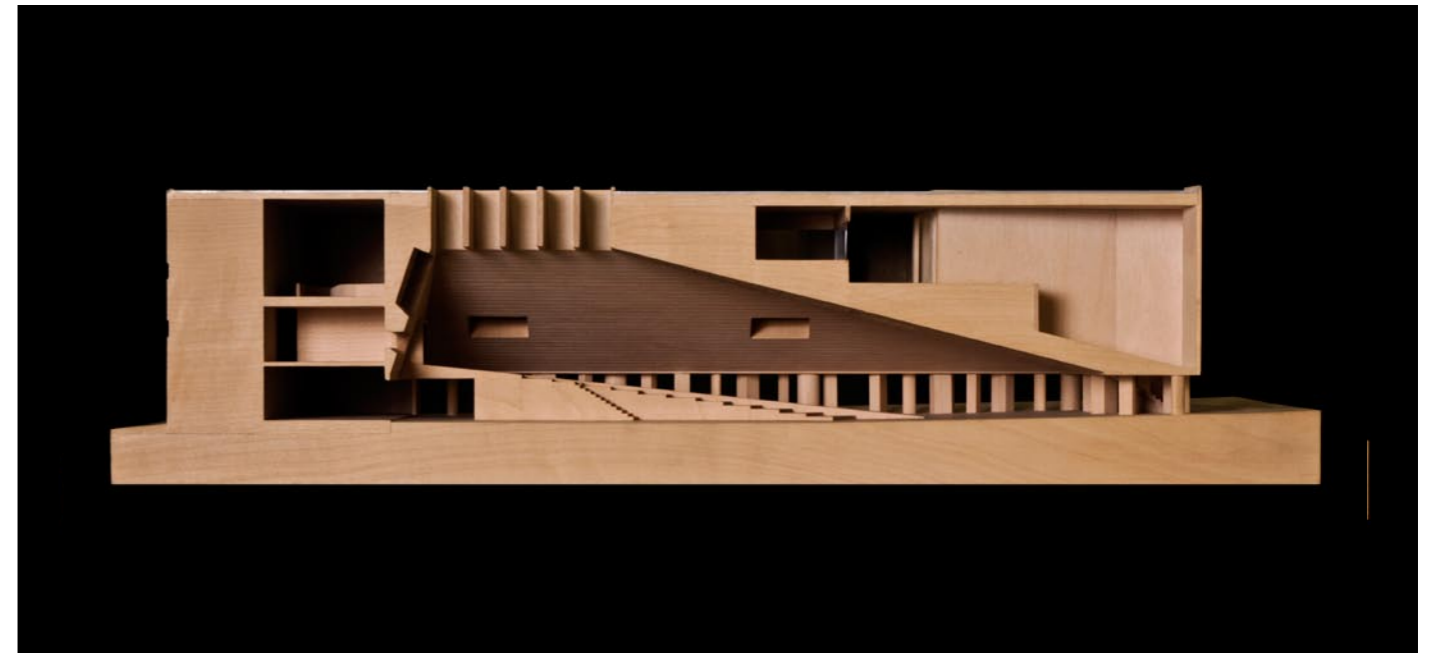
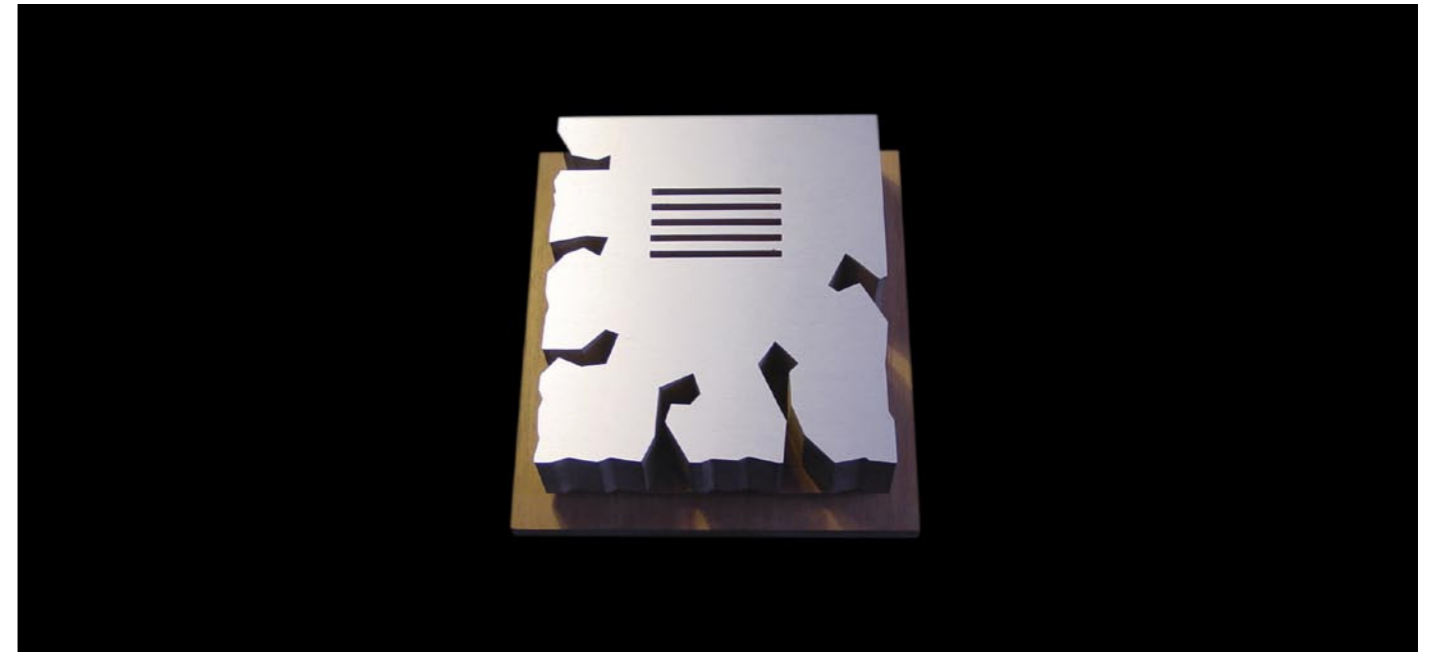


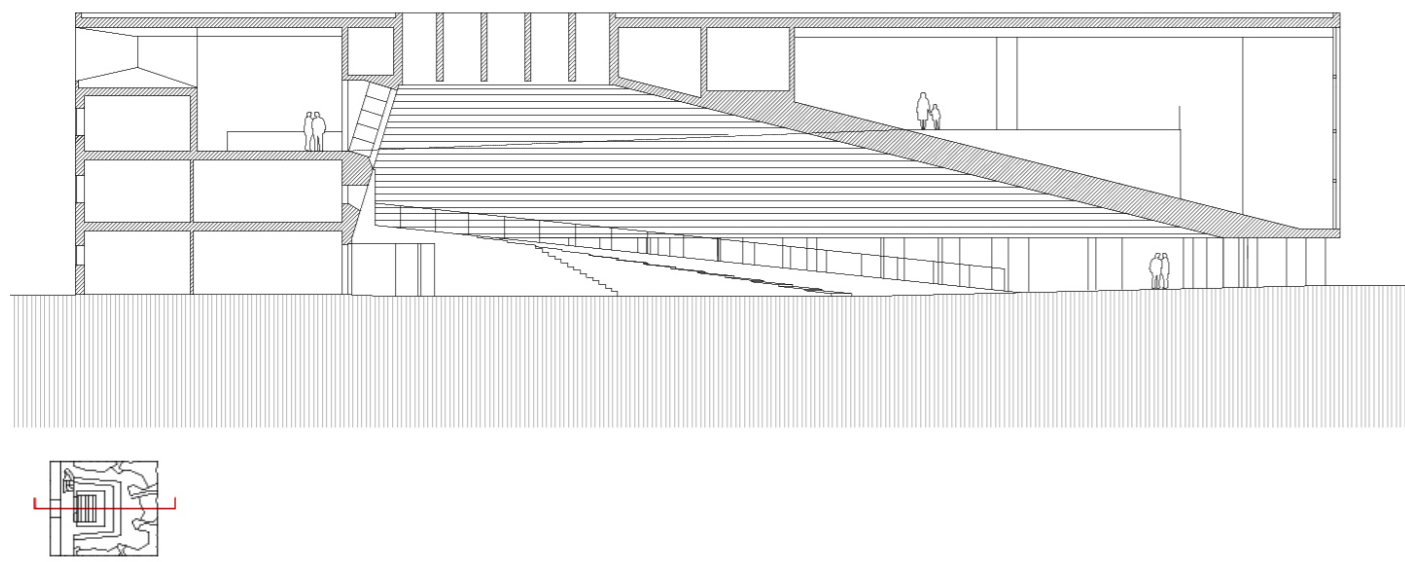
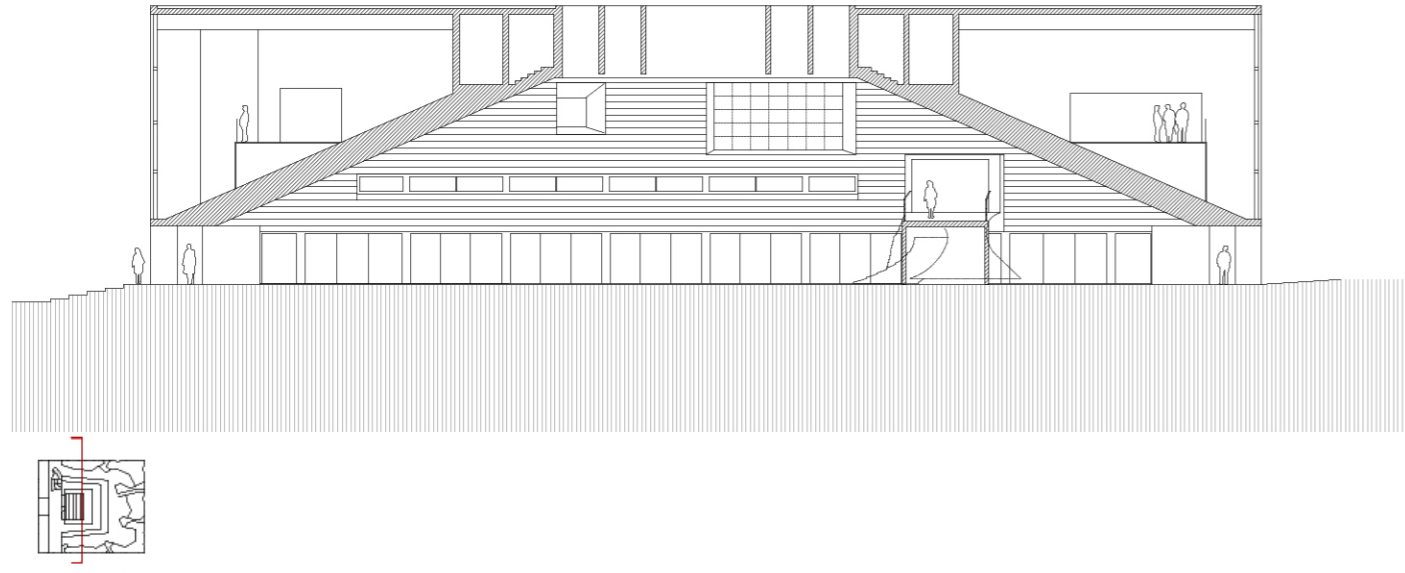




Detailed Exterior Views

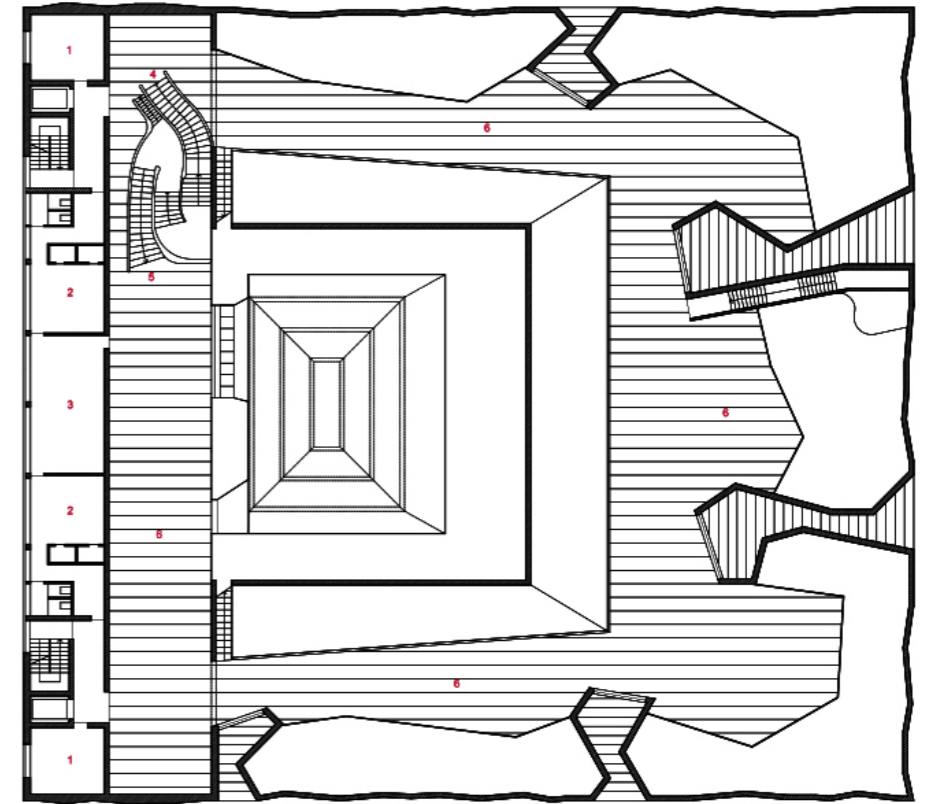
Detailed Interior Views



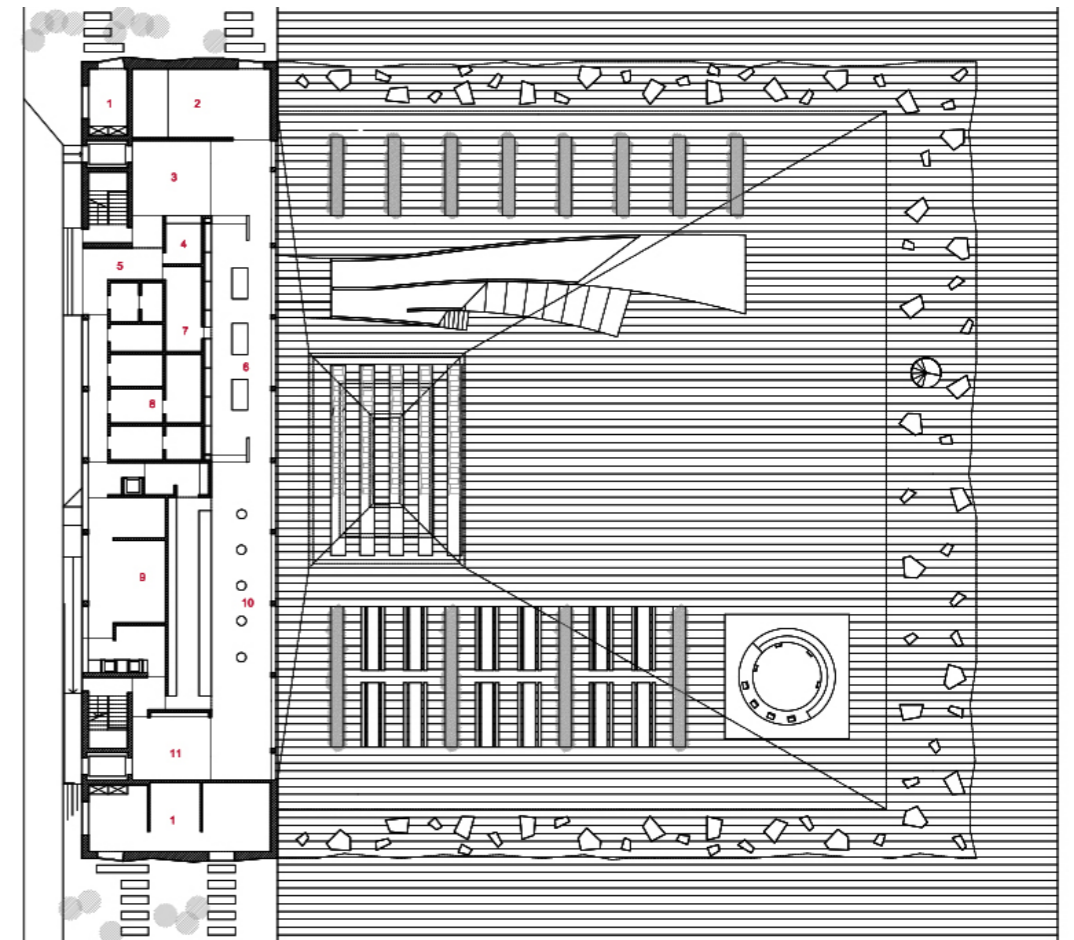


Sections

First plan



Ground floor



Floor plans

**Spain's National Pavilion at World fair Expo 2000.  
Hannover, Germany**

**MAIN DATA**

Client: State Corporation Expo Hannover 2000  
Address: Boulevard der Eu, 15. 30539 Hannover, Germany  
Type: Museums and Galleries, Education and Culture  
Status: Built

**DATAS**

Competition: 1999  
Design of project: 1999  
Construction: 1999-2000  
Implementation: 2000

**SURFACES**

Site: 4.000 m<sup>2</sup>  
Main building: 10.774 m<sup>2</sup>  
Other buildings: -  
TOTAL: 10.774 m<sup>2</sup>

**PROJECT TEAM**

Main Architect: Cruz y Ortiz Arquitectos  
Collaborators: Joaquín Pérez-Goicoechea, Sancho Igual, Blanca Sanchez  
Local Architect: OHM mit Carmina Schmick, Hamburg  
Interior design: -  
Lighting design: CH Design AG, St.Gallen, Charles Keller  
Landscape architect: Arquitectura del Paisatge, Barcelona  
Restoration architect: -  
Digital imaging: -  
Model: Luis Montiel  
Photography: Duccio Malagamba  
Structural engineering: CESMA Ingenieros  
Climate engineer: JG Ingenieros  
Building physics advisor: -  
Fire safety specialist: -  
Health and Safety: -  
Urban planning: -  
Survey: Análisis de la Edificación, Seville , OHM, Hamburg  
Site control: Análisis de la Edificación, Seville , OHM, Hamburg  
Contractors: OHL, S.A. , Madrid  
HOCHTIEF Aktiengesellschaft, Dirk Rehaag, Hannover

**AWARDS**

- First Prize in the Competition for the Spain Pavilion at the Hannover Expo 2000, organized by the State Society 2000 Hanover in October 1998