

'The Circle' complex at the airport. Offices, hotels, medical, commercial and convention center



Zurich, Switzerland



Publication's title: 'The Circle' complex at the airport, Zurich
Typology: Transport, Offices, Hotel, Education and culture, Mixed uses
Client: Unique Flughafen zürich AG
Surface: 286.878 m²
Year: 2009
Status: Competition. Finalist

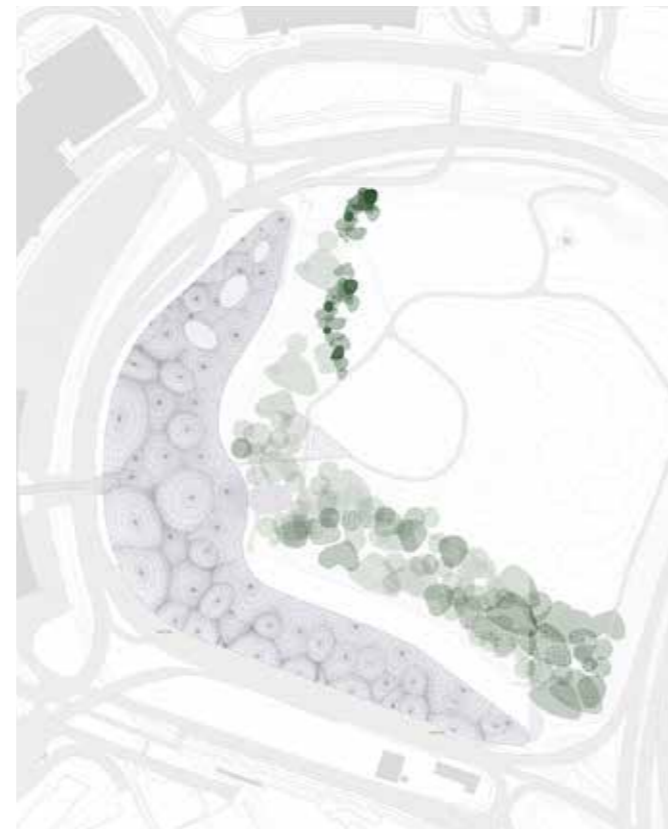


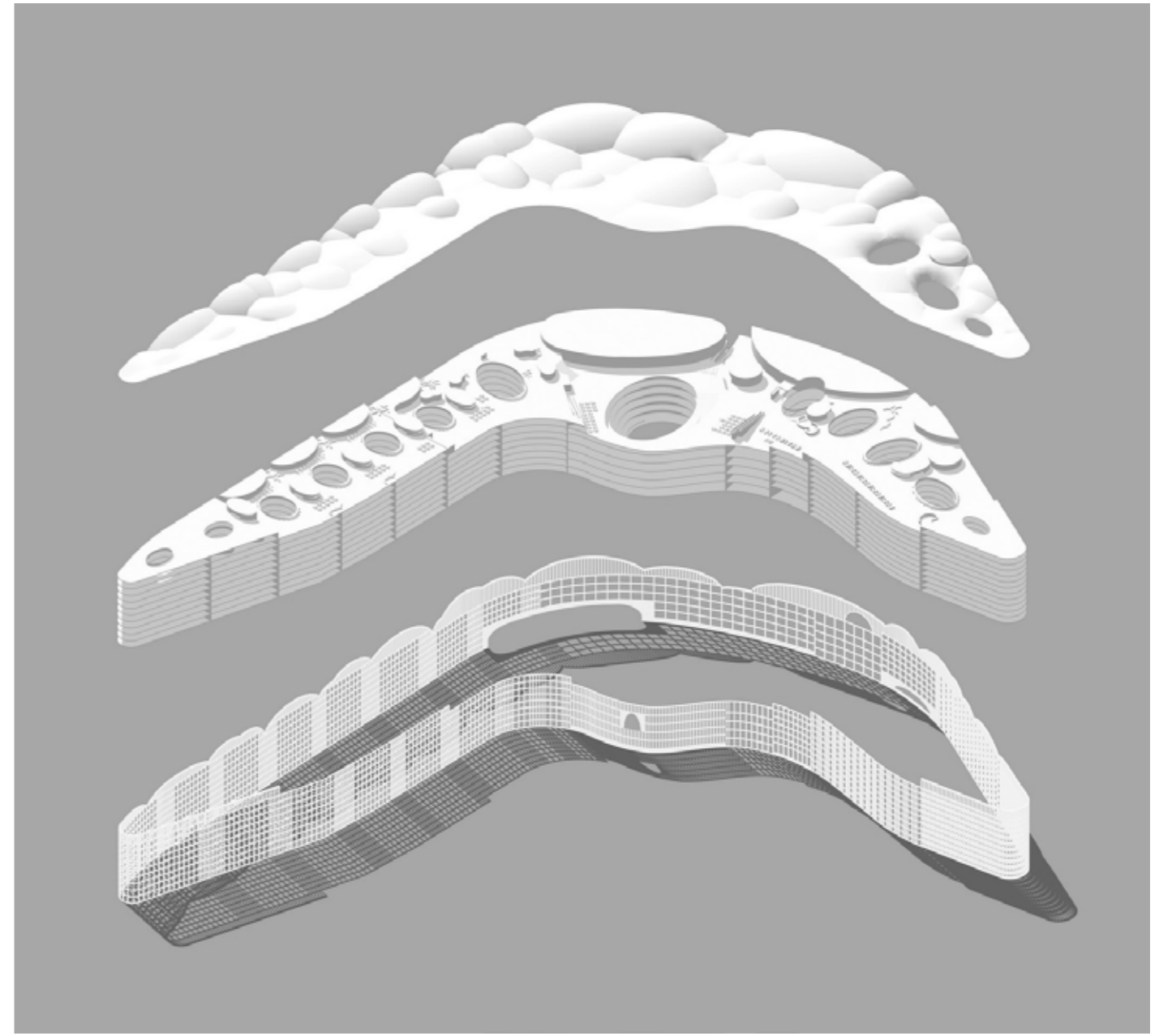
REPORT

Circular plot shape is a result of the union of several plots that have provoked hill's autonomy loss. Due to the hill's topography and the location of the upper street, lower floors' natural light conditions and complex's baseboard's openings result difficult to resolve. With these conditions, it is proposed a wide space under the ceiling, called 'The clouds', where arrival zone, reception and use modules access take placed. Besides it gets excellent light conditions and views from visitor access.

Complexity programme and its extreme density and makes conditions to get maximum built area coefficient be unfavorable. In addition, the programme goes without a central open space from which could enjoy and take advantage of different modules. Most of restaurants and spaces intended to public will be distributed in different levels.

'The clouds' builds up freely skylining the sky, providing the building a character that would be impossible to get with a main access from the ground floor. This decision affects on flexibility and phases organization that a complex in this magnitude requires. From five central modules arranged, it could be added more in following phases, with the only condition to keep analogy with the rest.







Sections

Floor plans

'The Circle' complex at the airport. Offices, hotels, medical, commercial and convention center. Zurich, Switzerland

MAIN DATA

Client:	Unique Flughafen zürich AG
Address:	Flughafen Zürich AG, Butzenbühlring. 8302 Kloten. Zurich, Switzerland
Type:	Transport, Offices, Hotel, Education and culture, Mixed uses
Status:	Competition. Finalist

DATAS

Competition:	2009
Design of project:	2009
Construction:	-
Implementation:	-

SURFACES

Site:	126.820 m ²
Main building:	Aparcamiento: 68.484 m ² , Oficinas: 95.617 m ² , Hotel: 36.819 m ² , Educación: 17.392 m ² , Salud: 10.100 m ² , Cultura: 14.634 m ² , Comercial: 23.157 m ² , Restauración: 20.675 m ²
Other buildings:	-
TOTAL:	286.878 m ²

PROJECT TEAM

Main Architect:	Cruz y Ortiz Arquitectos
Collaborators:	José Ortiz, Joaquín Hurtado, Curro Pérez, Juan Carlos Mulero, Marije Ter Steege, Daniel Rodriguez, Miguel Velasco
Local Architect:	Giraudi & Wettstein
Interior design:	-
Lighting design:	-
Landscape architect:	-
Restoration architect:	-
Digital imaging:	-
Model:	Cruz y Ortiz Arquitectos
Photography:	Marchesoni Modelli
Structural engineering:	-
Climate engineer:	-
Building physics advisor:	-
Fire safety specialist:	-
Health and Safety:	-
Urban planning:	-
Survey:	-
Site control:	-