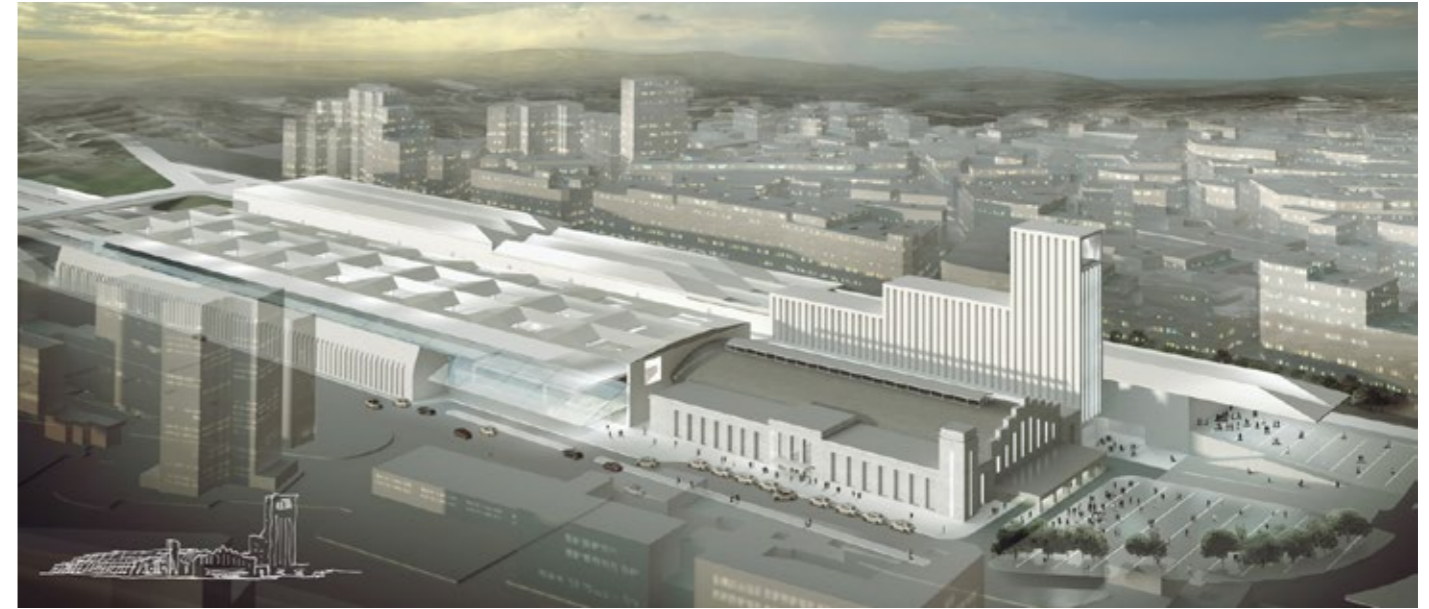


High Speed intermodal Central railway Station,
Hotel, Offices and Commercial

La Coruña, Spain



Publication's title: High Speed intermodal railway Station,
La Coruña
Typology: Transport, Commercial, Offices, Hotel, Mixed uses
Client: ADIF
Surface: 210.297 m²
Year: 2010
Status: Competition. Finalist

REPORT

The programme is divided between two buildings. One will focus on all modes of transport and will include the railway station, bus station and parking. The other, the Vialia building, will incorporate a commercial area. Construction will thus be simplified and the stages required by the program regarding the necessities of the tender will be rigorously respected.

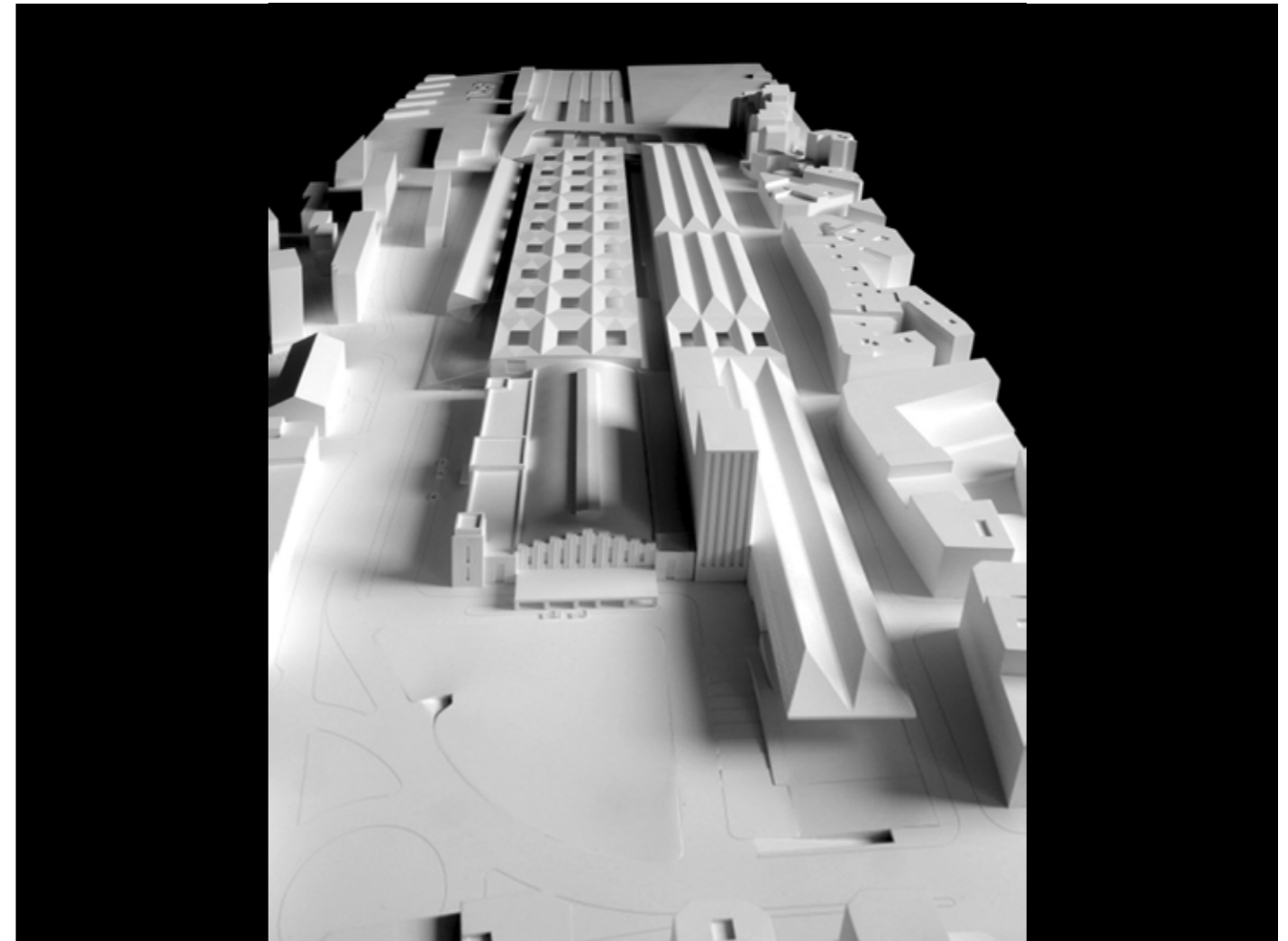
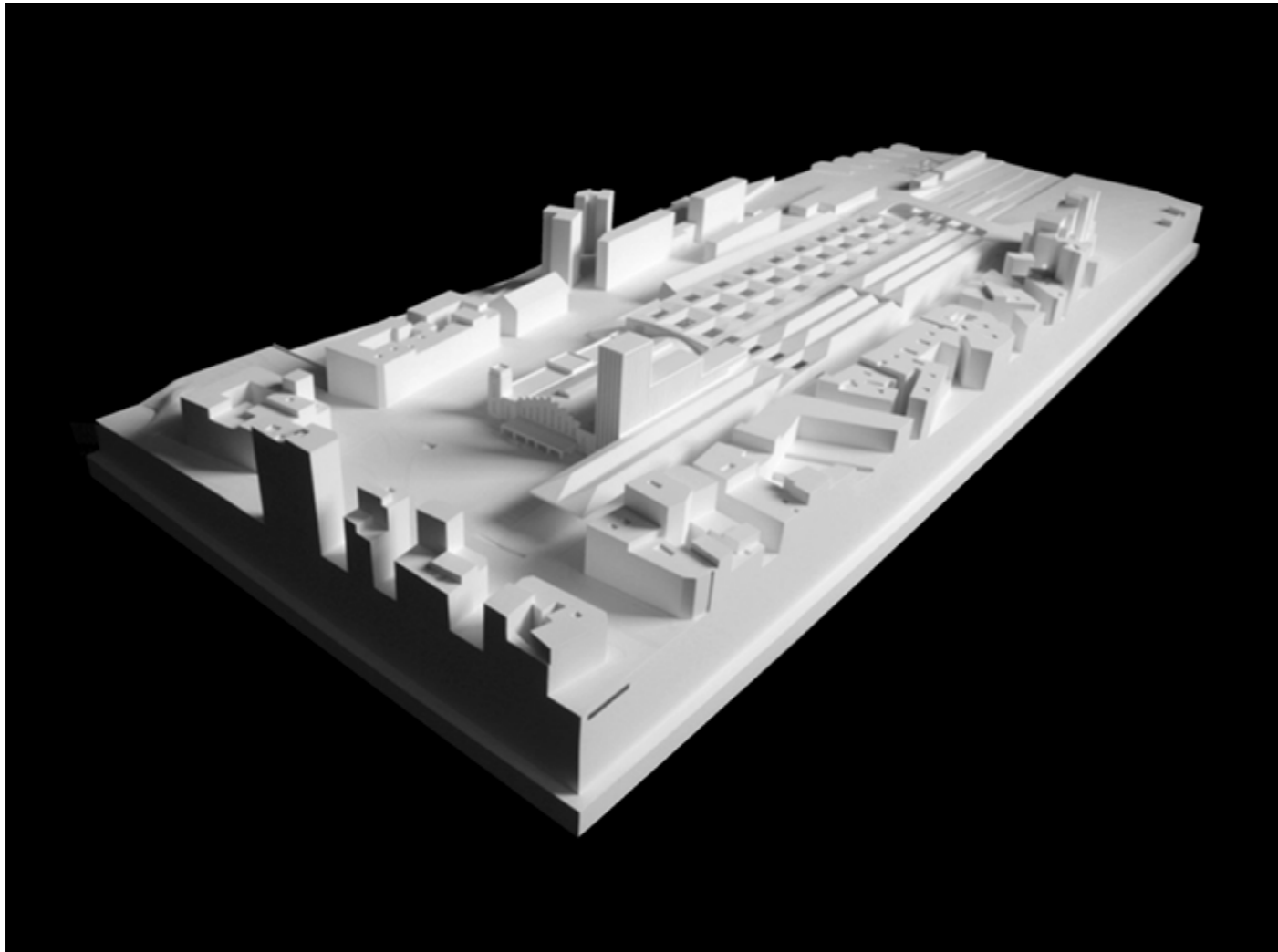
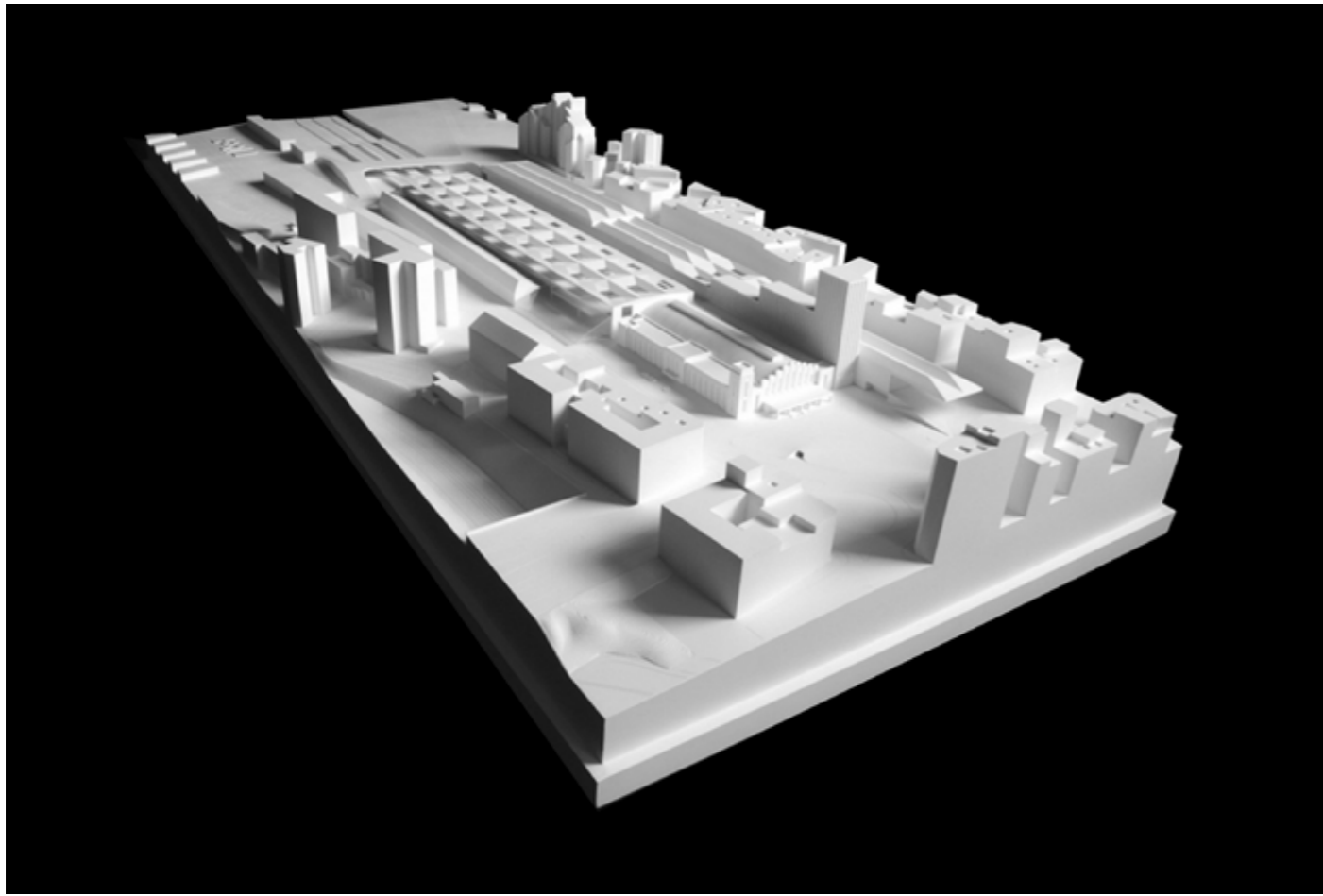
Enlargement of the railway station, bus station and parking is proposed as a compact building where these overlapping elements have the same dimensions, thus reducing connection times between the different modes of transport.

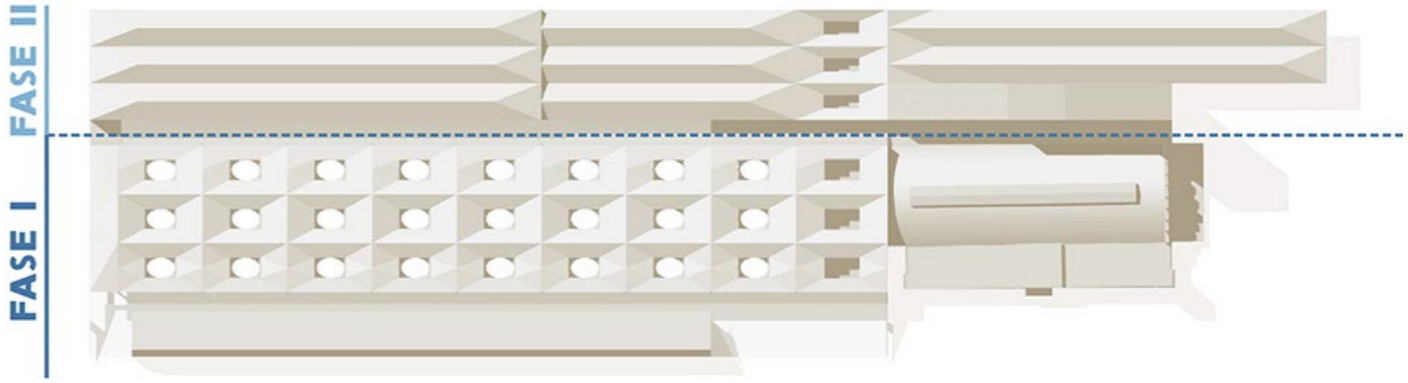
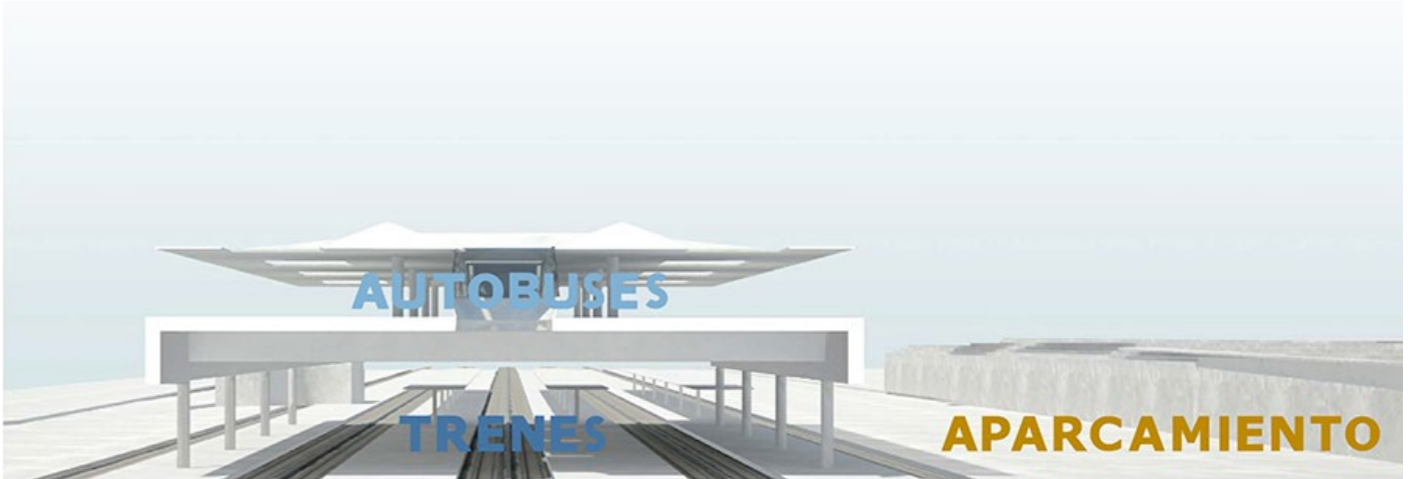
The roof, planned with skylights, attempts to express the unity of the whole ensemble, providing natural light over the platforms. The bay platform is the organizational nucleus of the whole. The street entrance integrates the urban connection between the east and west areas of the city. The current canopy becomes a new hall where all traveller necessities are located.

The space located to the north will be converted into a great urban space through its renovation for the creation of a new square that the station, Vialia building and hotel will all open up into.

The shopping area stretches lengthwise along the site; it adopts a horizontal layout over three floors and is accessible from the platforms, the station square and the street. A new tower is incorporated into the station which is more in line with the current size of the city and includes the offices and hotel.

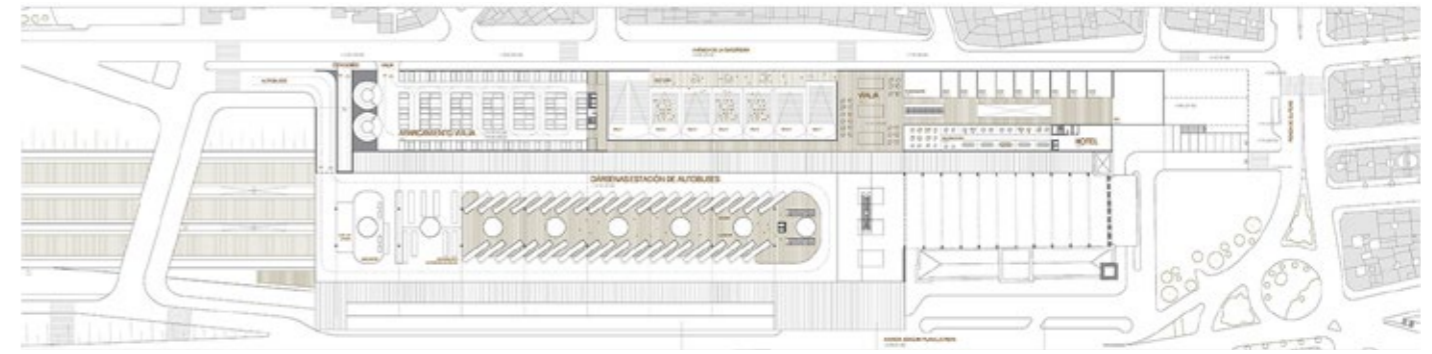




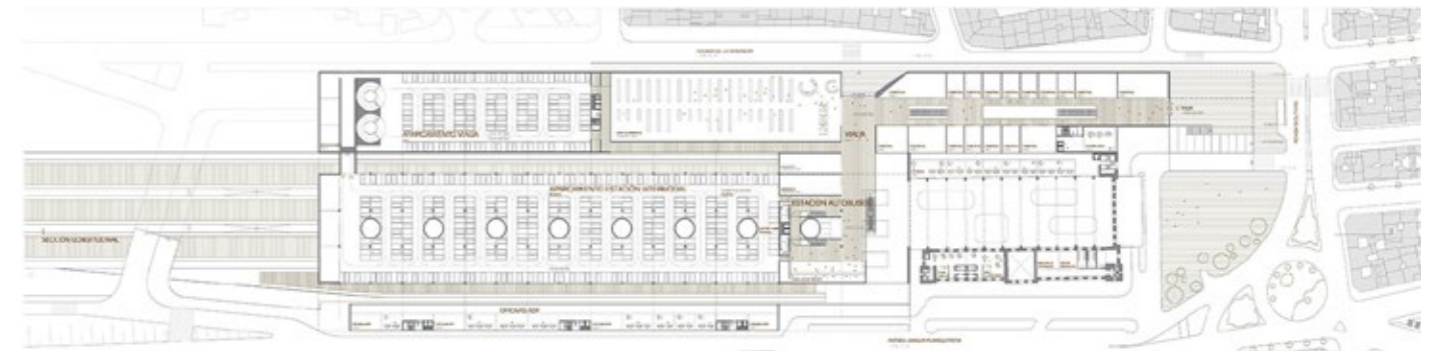




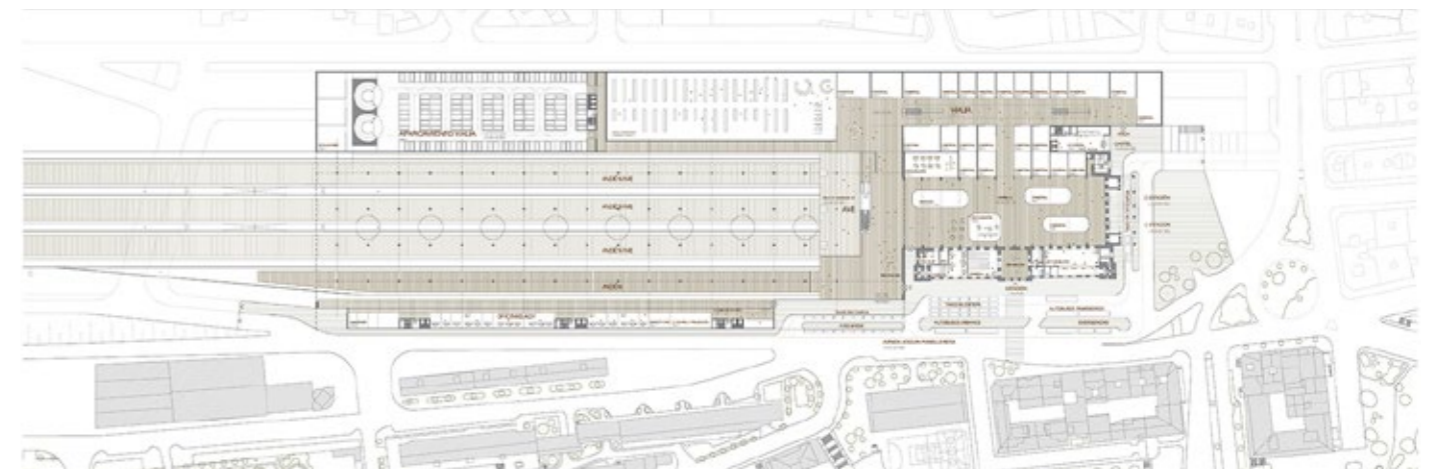
Sections



Buses floor



Parking floor



Platforms floor

Floor plans

High Speed intermodal Central railway Station, Hotel, Offices and Commercial. La Coruña, Spain

MAIN DATA

Client: ADIF
Address: Avda. Sardiñeira s/n. 15007 La Coruña, Spain
Type: Transport, Commercial, Offices, Hotel, Mixed uses
Status: Competition. Finalist

DATAS

Competition: 2010
Design of project: 2010
Construction: -
Implementation: -

SURFACES

Site: 55.418 m²
Main building: 196.985 m²
Other buildings: Hotel 4.380 m², Old Station 8.932 m²
TOTAL: 210.297 m²

PROJECT TEAM

Main Architect: Cruz y Ortiz Arquitectos
Collaborators: Jose Ortiz, Héctor Salcedo, Alejandro Álvarez, Lukas Hoye, Manuel Romero, Jesús Mejías
Local Architect: -
Interior design: -
Lighting design: -
Landscape architect: -
Restoration architect: -
Digital imaging: Cruz y Ortiz Arquitectos
Model: Queipo Maquetas
Photography: -
Structural engineering: -
Climate engineer: -
Building physics advisor: -
Fire safety specialist: -
Health and Safety: -
Urban planning: -
Survey: -
Site control: -
Contractors: -