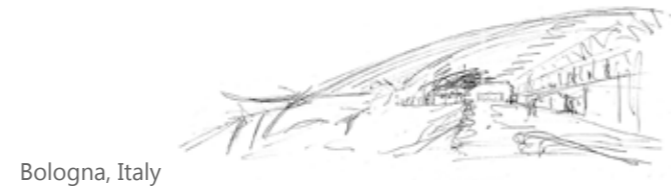


High Speed railway station and surrounding masterplan



Bologna, Italy



Publication's title: High Speed railway station and surrounding masterplan, Bologna
 Typology: Transport, Commercial, Mixed uses
 Client: Bologna City Council
 Surface: 239.218 m²
 Year: 2007
 Status: Competition. Finalist

REPORT

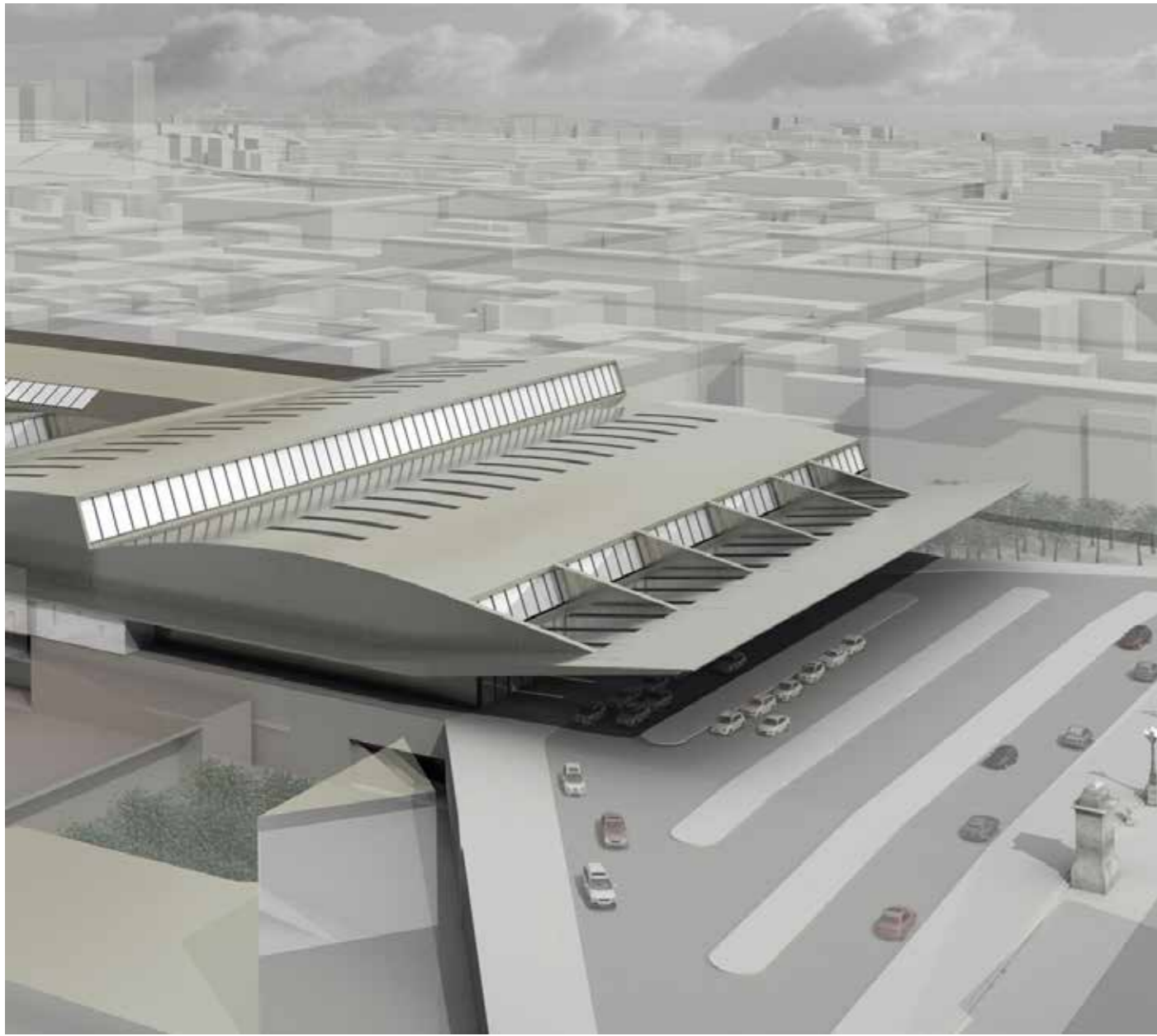
By the expresión 'piastra-ponte', competition bases seemed suggest a suture intervention of all previous railway situations. Provoked by railway traffic development that currently depends on different kinds of stations, this type of urban context is named as 'railway complex'. The intervention could have simply connect longitudinally above the tracks, nowadays subterranean, in connection with commercial uses to maintain historical station representative value.

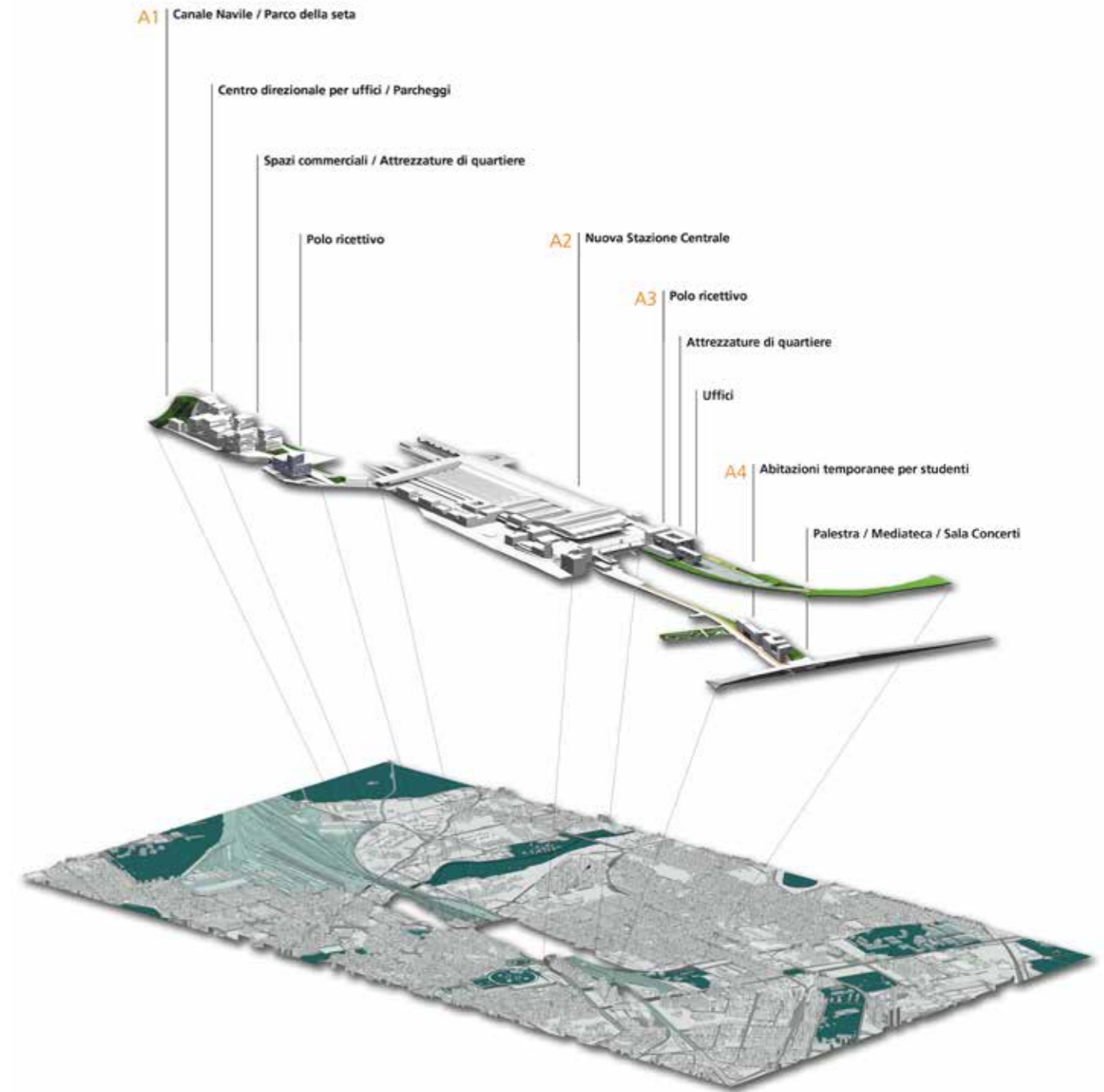
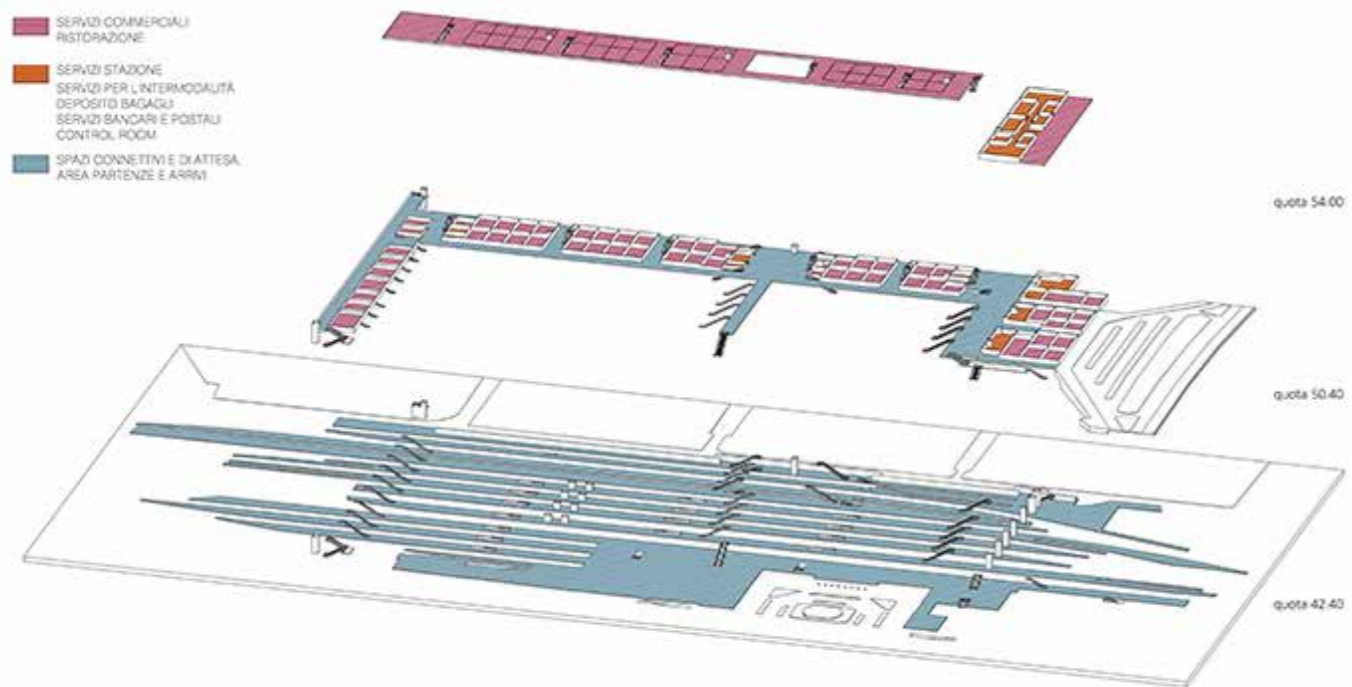
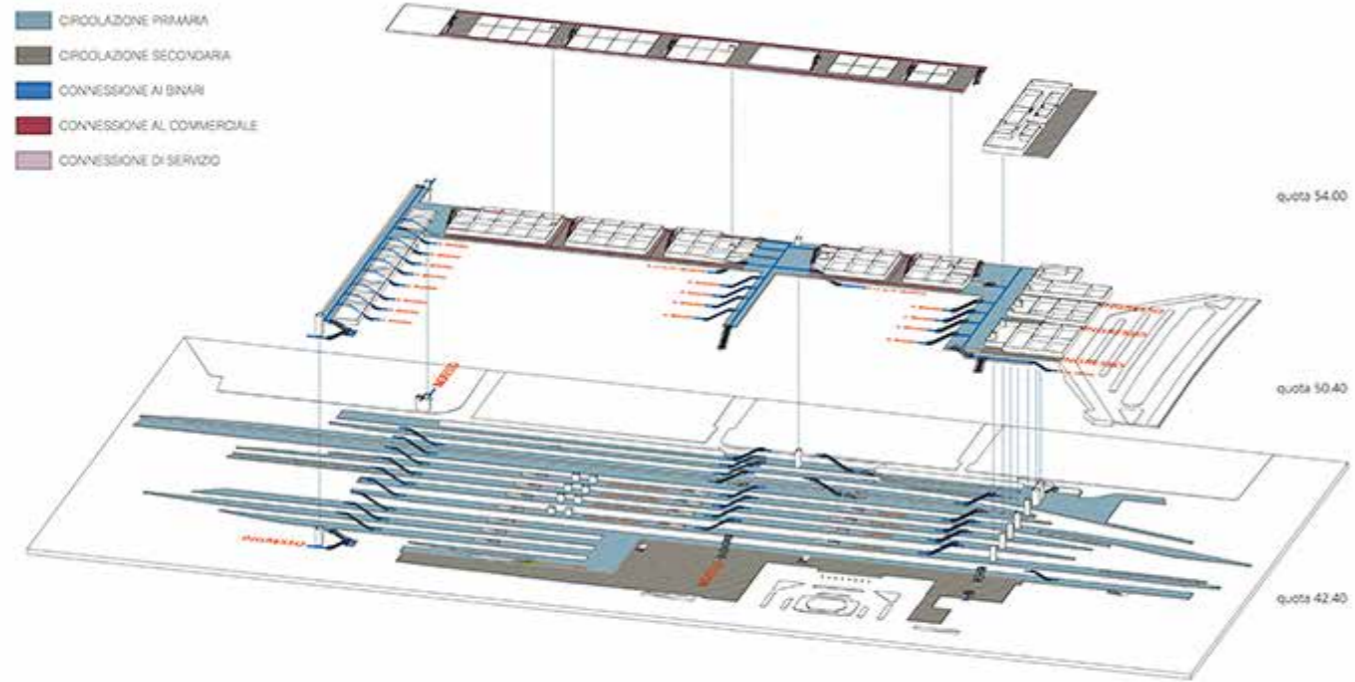
Nevertheless, situation in Bologna is different. In the proposal, station-over-tracks schedule is adopted, a kind of station that is not frequent, not dependent on commercial spaces, despite of requested surfaces and where views of the trains will be important.

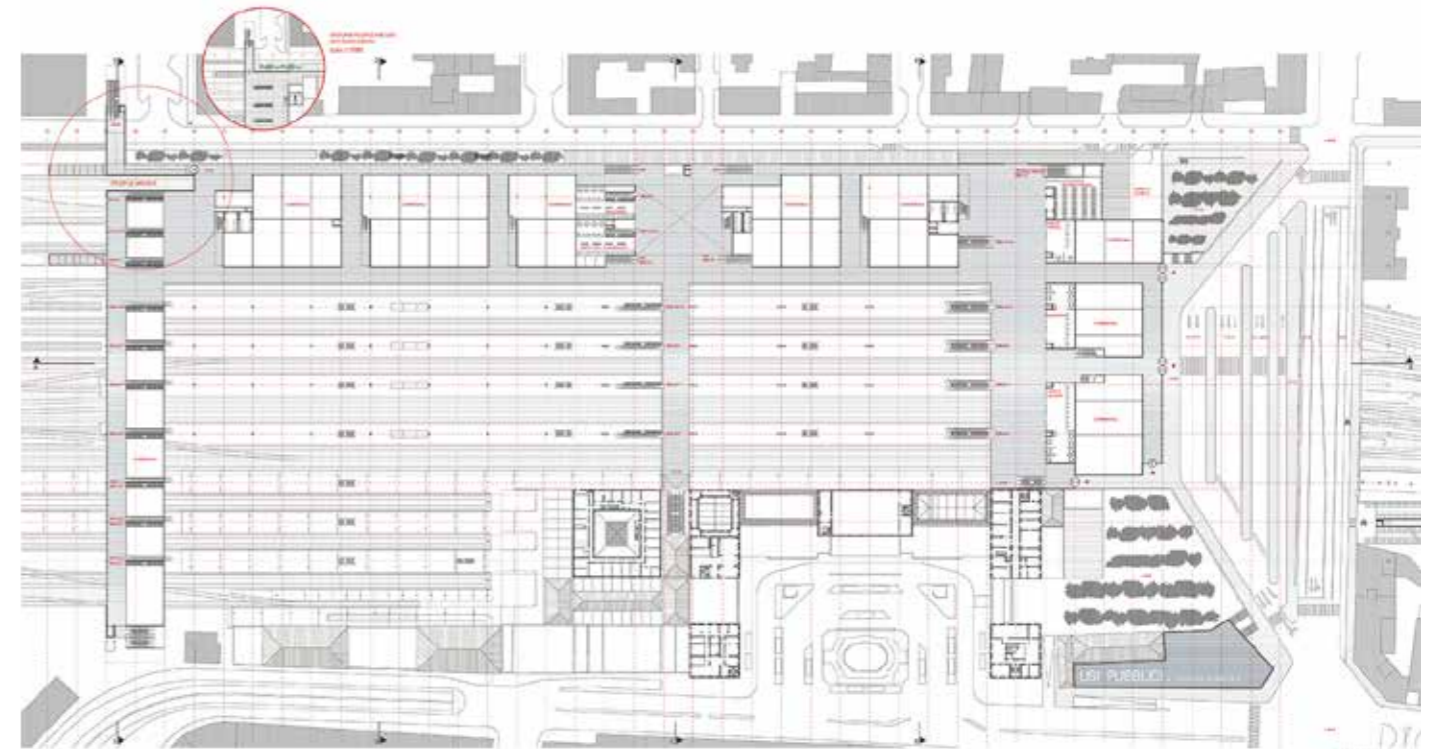
Architecture – building's section was always the appropriate instrument to charge train station project – accompanies flow of travelers and train movement, in a sequence of spaces that generate certain expressionist character.

Roof over railways connects initially with the modest height of historical shelter, growing up to the North in order to integrate in his rising zones that build over High-speed Station. The roof intersect with rising planes to get to new station's hall and shelter.

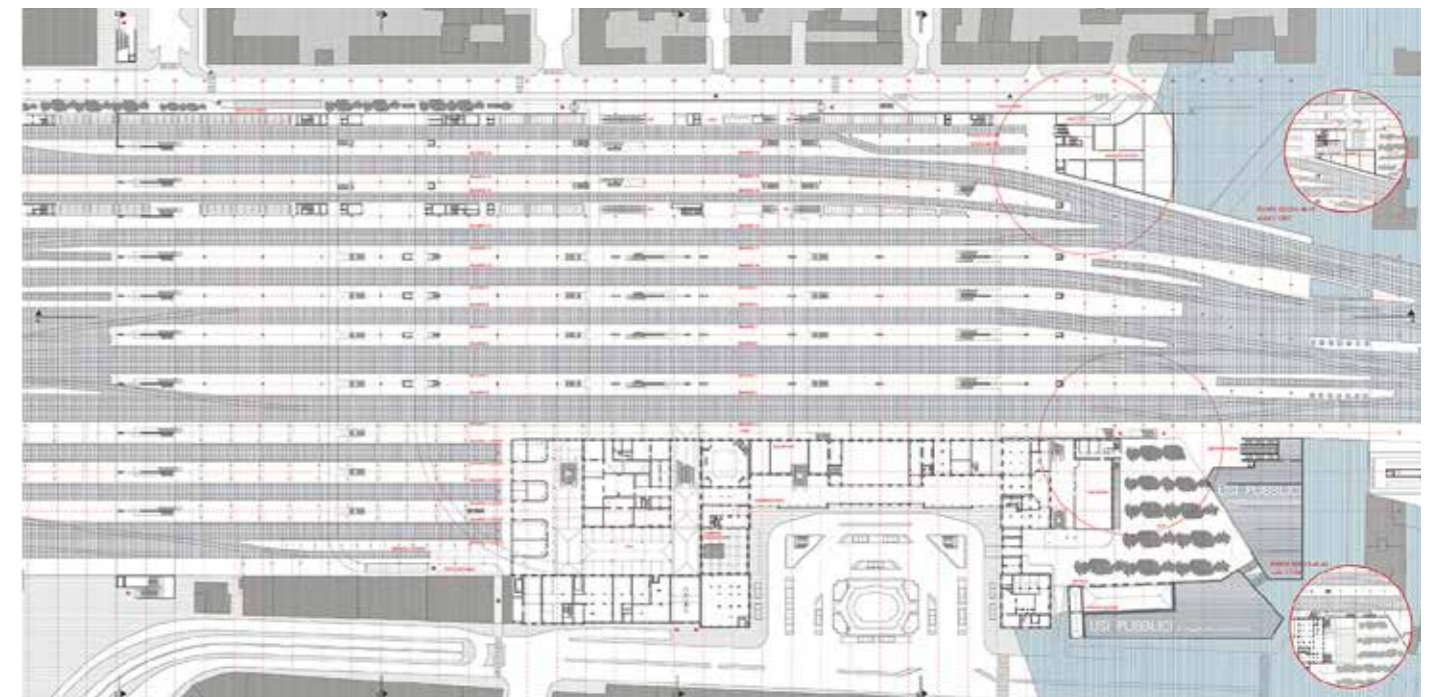
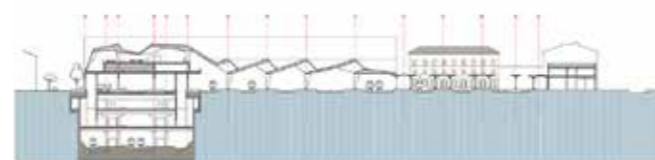
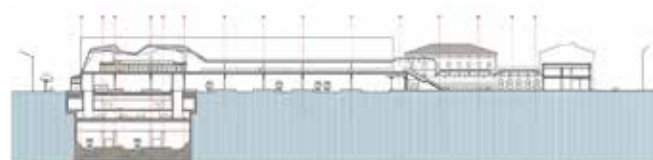








Floor +50,40



Floor +42,40

**High Speed railway station and surrounding masterplan.
Bologna, Italy**

MAIN DATA

Client: Municipality of Bologna and Italian Railway Group
Address: Via Giacomo Matteotti, 3. 40126 Bologna Italy
Type: Transport, Commercial, Mixed uses
Status: Competition. Finalist

DATAS

Competition: 2007
Design of project: 2007
Construction: -
Implementation: -

SURFACES

Site: 158.806 m²
Main building: 122.519 m²
Other buildings: Bikeparking 2.566 m², Platforms 88.334 m²,
Old Station 27.799 m²
TOTAL: 239.218 m²

PROJECT TEAM

Main Architect: Cruz y Ortiz Arquitectos
Collaborators: Javier Monge, Teresa Cruz, Federico Cazzaniga, Guillermo Torres, Rubén Ramos, Óscar García de la Cámara, Celina Escobar, Alejandro Álvarez, Juan Carlos Mulero,
Autonome Forme-
Local Architect: -
Interior design: -
Lighting design: MBA, Ing. F. Nicolicchia
Landscape architect: SLA
Restoration architect: -
Digital imaging: Cruz y Ortiz Arquitectos
Model: -
Photography: -
Structural engineering: HIG
Climate engineer: MBA, Ing. F. Nicolicchia
Building physics advisor: -
Fire safety specialist: BTF Cognos
Health and Safety: BTF Cognos
Urban planning: Ing. Dario Di Vincenzo (Viabilidad)
Survey: -
Site control: -
Contractors: -