

University Campus of SUPSI Learning center for
University Campus della Scuola universitaria
professionale SUPSI - SBB

Cruz y Ortiz Arquitectos + Giraudi Radczuweit

Lugano, Switzerland



Publication's title: Learning center for University Campus
SUPSI - SBB, Lugano
Typology: Education and Culture, Offices, Research
Client: SBB CFF FFS
Surface: 31.934 m²
Year: 2012
Status: In process

REPORT

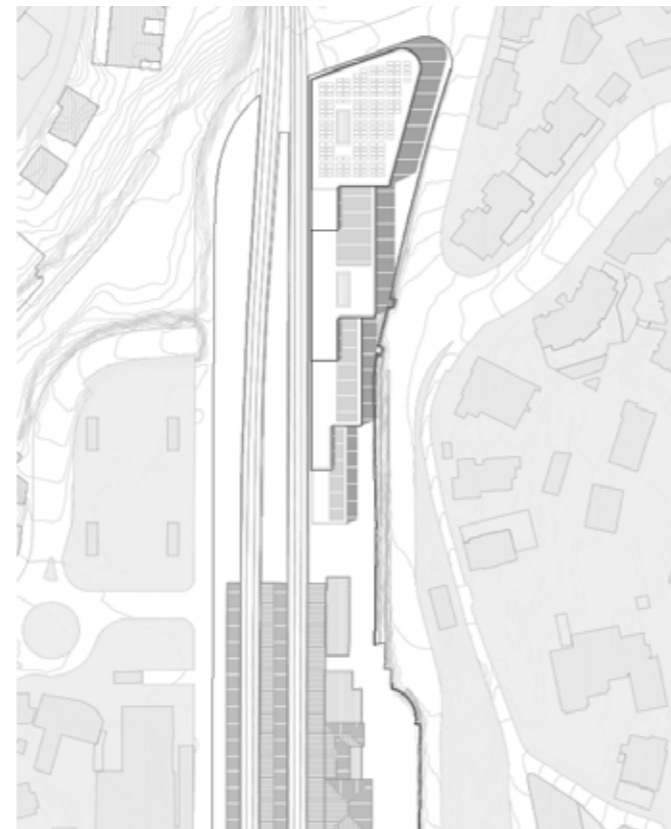
The plot next to Lugano Station is long, narrow and full of constraints: the proximity of the train tracks, the wall base of the station, a tunnel that crosses underneath, the obligation to allow for the passage of several bus lines and the future connection with the SUPSI campus over the trench. And it is this site, so small and complicated, which is going to accommodate a large and complex academic project.

Our purpose was to find an idea to develop the entire project. This is achieved through a dual staggering, both in floor and elevation, which allows us to split the volume and naturally incorporate the various uses.

On the ground, the uneven line follows and adapts to the incline created by the edge of the wall base, creating different entrances to the building at each level. The building is also staggered vertically, gradually ascending, generating a new volume where the program required by SUPSI is located.

A lengthwise internal spine runs through the entire building, providing it with an inner continuity that allows for a very flexible adaptation to changes in the design over time. In it are included vertical communication cores, restrooms, service spaces and horizontal areas to move around.

Parallel to the cluster of tracks, the building is located on platform one, practically incorporating it and making it climb, generating a round divide in the volume. This route will naturally meet up with the future SUPSI campus which will be built over the trench, presently a true urban wound.





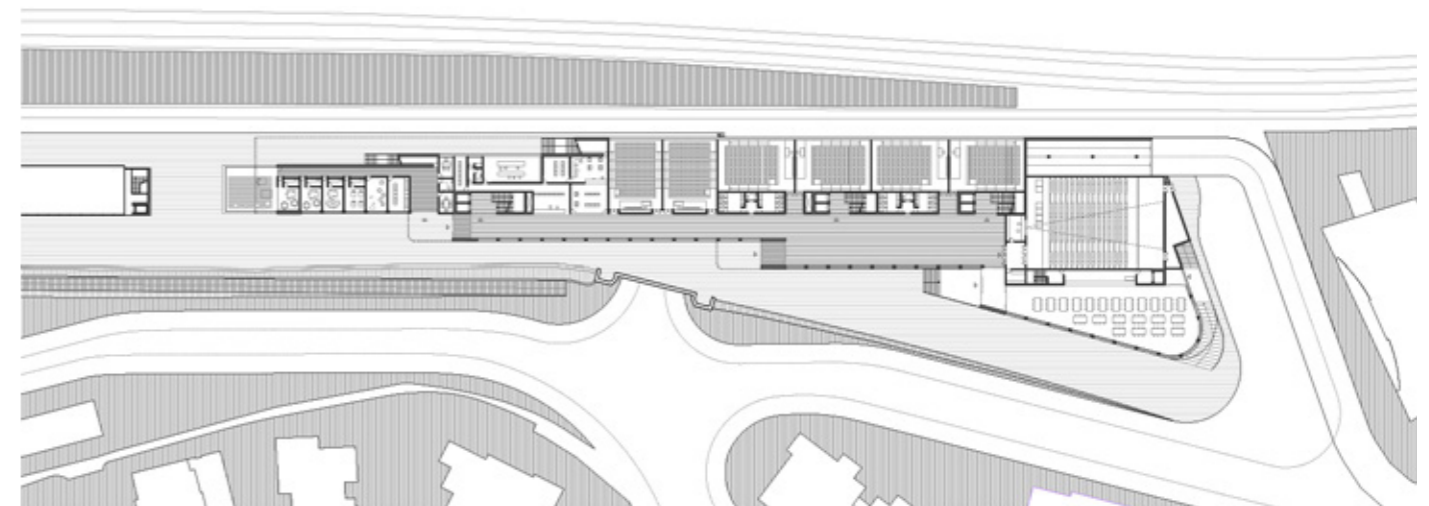
Sections



Third floor



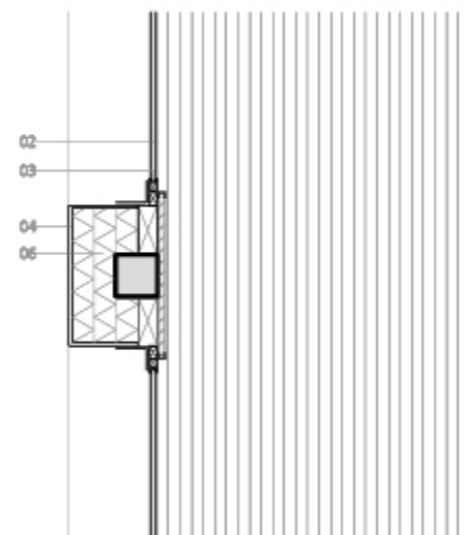
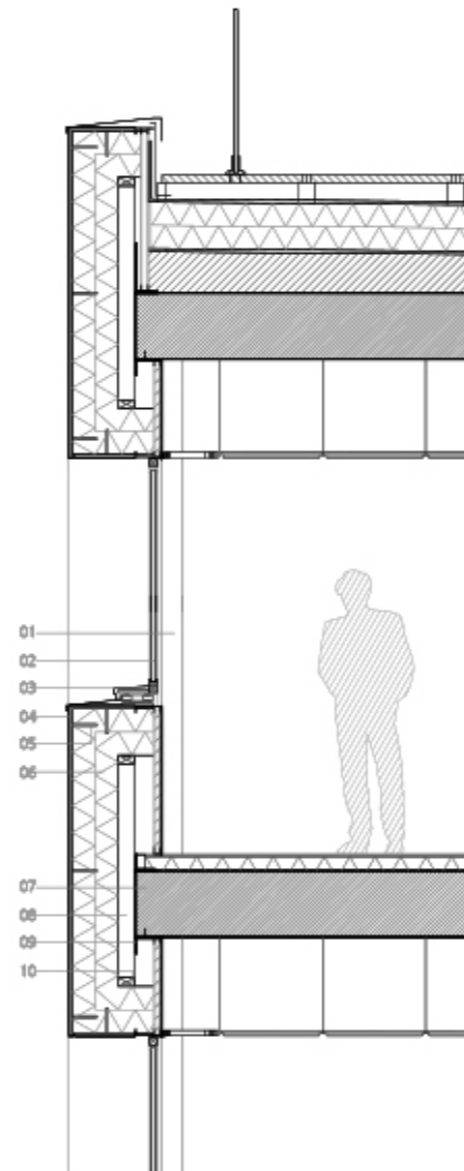
First floor



Ground floor

Floor plans

Learning center for University Campus della Scuola universitaria professionale SUPSI - SBB. Lugano, Switzerland



Structural Section

MAIN DATA

Client: SBB CFF FFS
Address: Piazzale Stazione. 6900 Lugano, Switzerland
Type: Education and Culture, Offices, Research
Status: In process

DATAS

Competition: 2012
Design of project: 2012
Construction: -
Implementation: -

SURFACES

Site: 5.580 m²
Main building: 31.934 m²
Other buildings: -
TOTAL: 31.934 m²

PROJECT TEAM

Main Architect: Cruz y Ortiz Arquitectos + Giraudi Radczuweit
Collaborators: Giordano Baly, David García, Vesna Poljancic , Borja Sallago, Alejandro Álvarez

Local Architect: -
Interior design: -
Lighting design: -
Landscape architect: -
Restoration architect: -
Digital imaging: Cruz y Ortiz Arquitectos
Model: -
Photography: -
Structural engineering: Fürst Laffranchi Bauingenieure
Climate engineer: -
Building physics advisor: -
Fire safety specialist: -
Health and Safety: -
Urban planning: Cruz y Ortiz Arquitectos
Survey: -
Site control: -
Contractors: -
Transport Engineering: Citec Ingénieurs Conseils