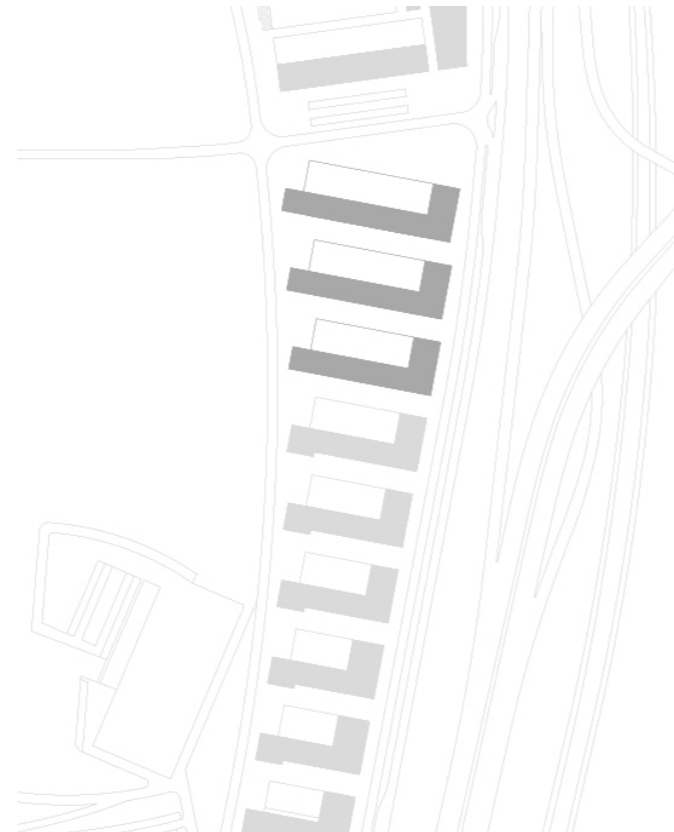


Residential blocks conformation at world fair Expo 98

Lisbon, Portugal

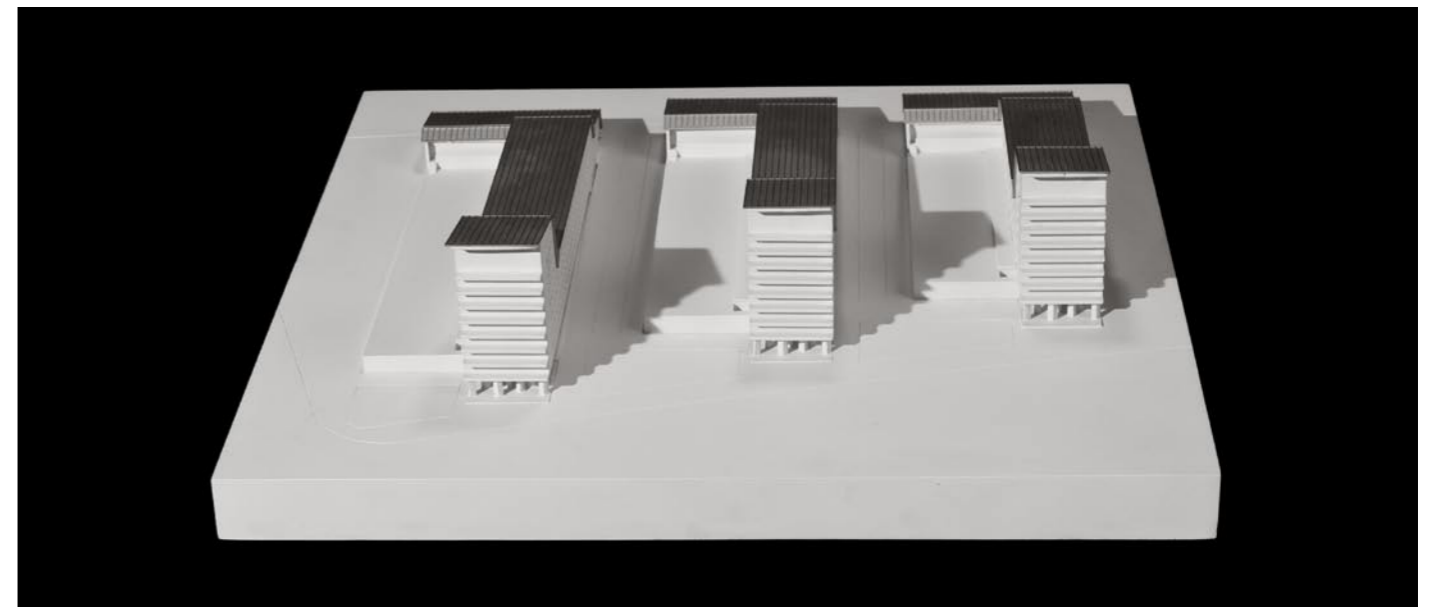
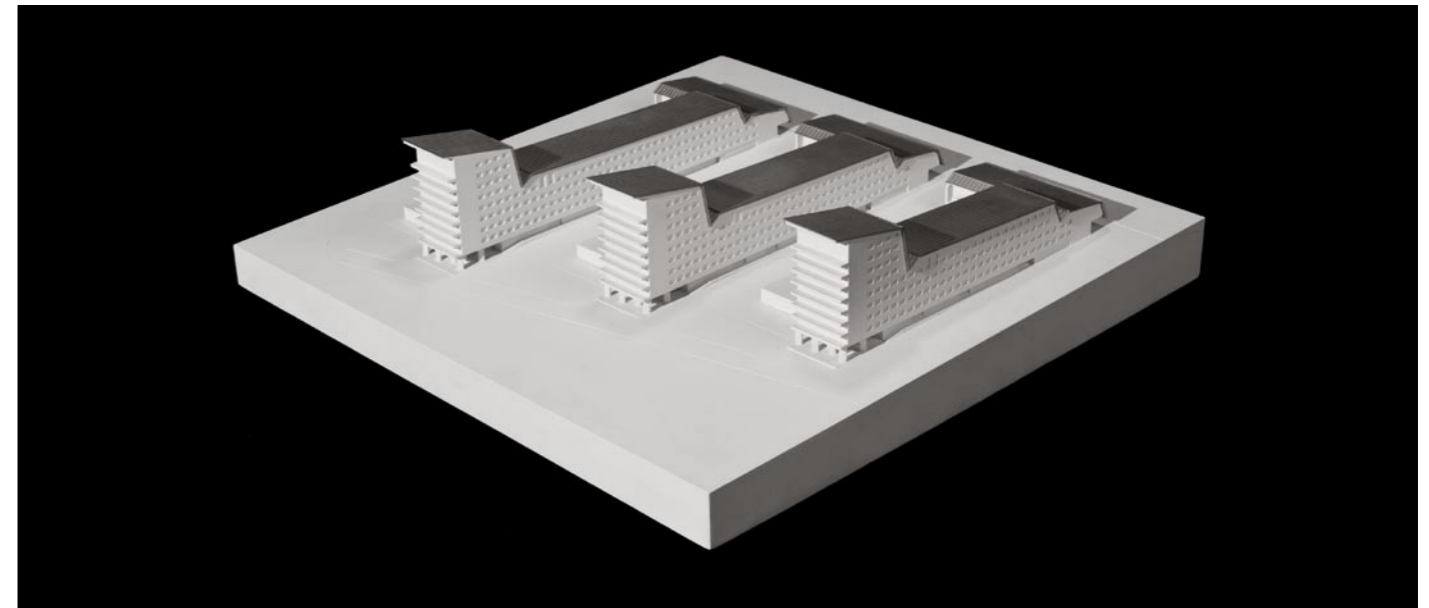
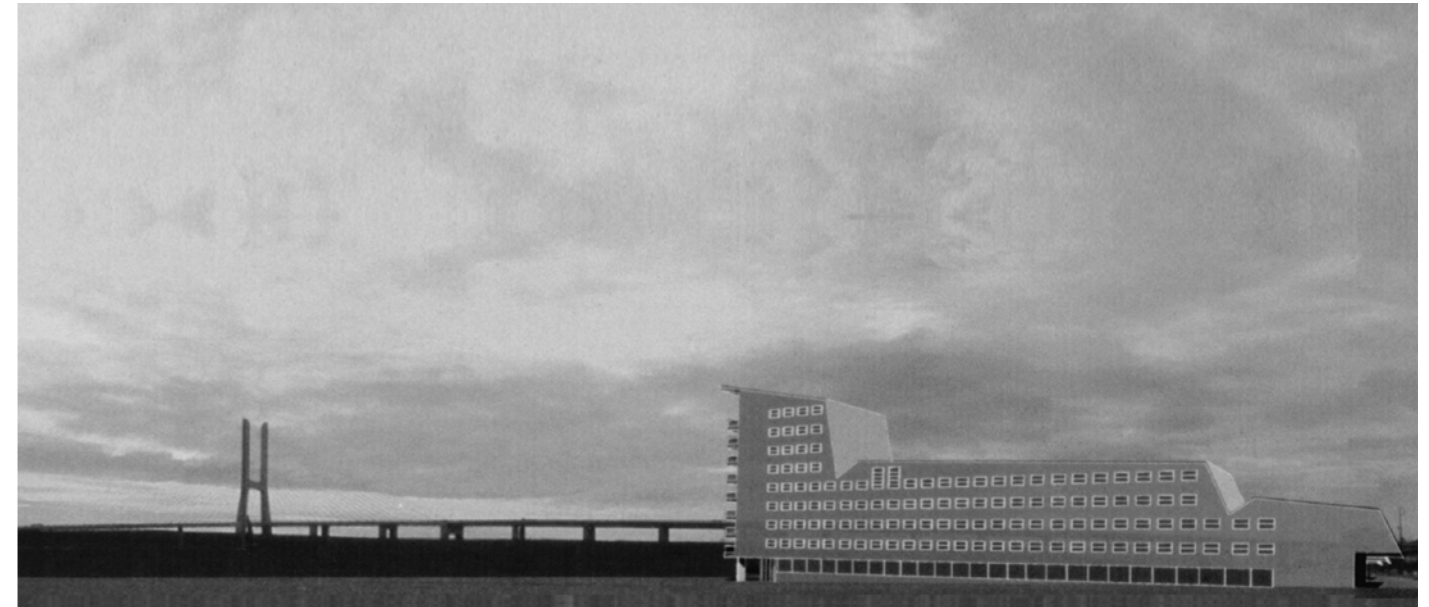


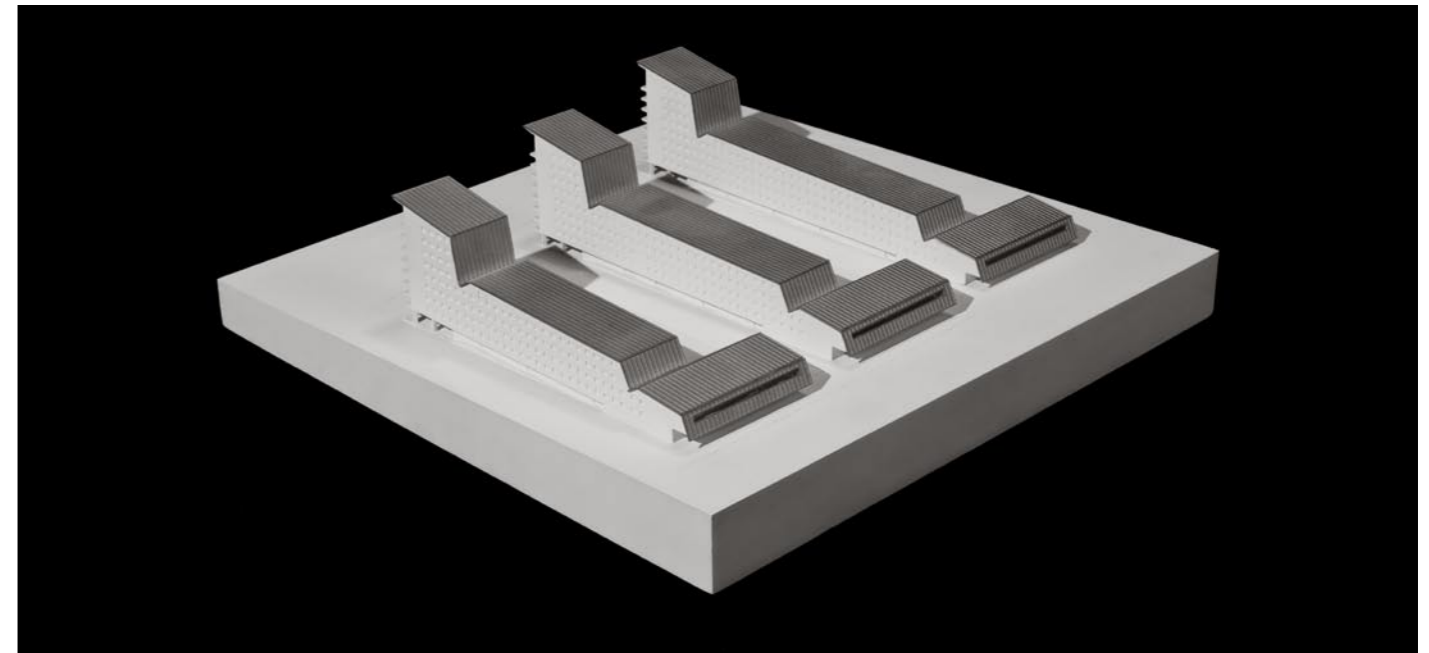
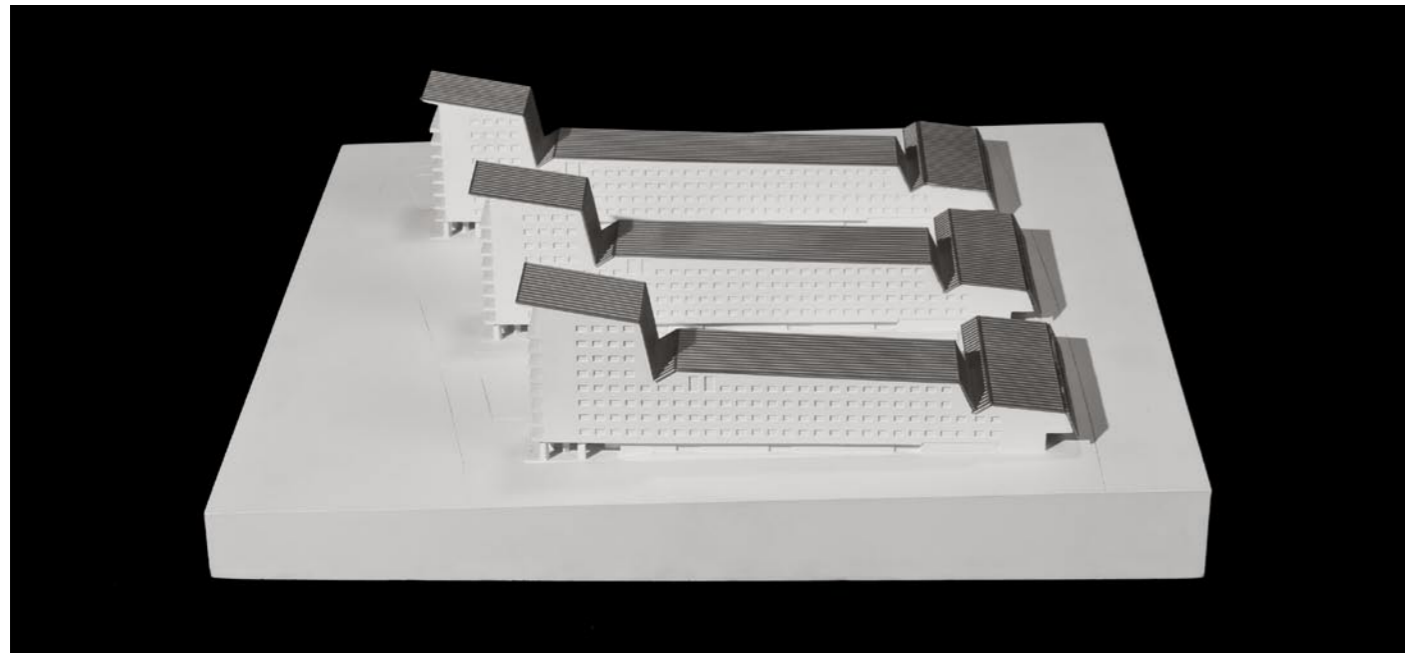
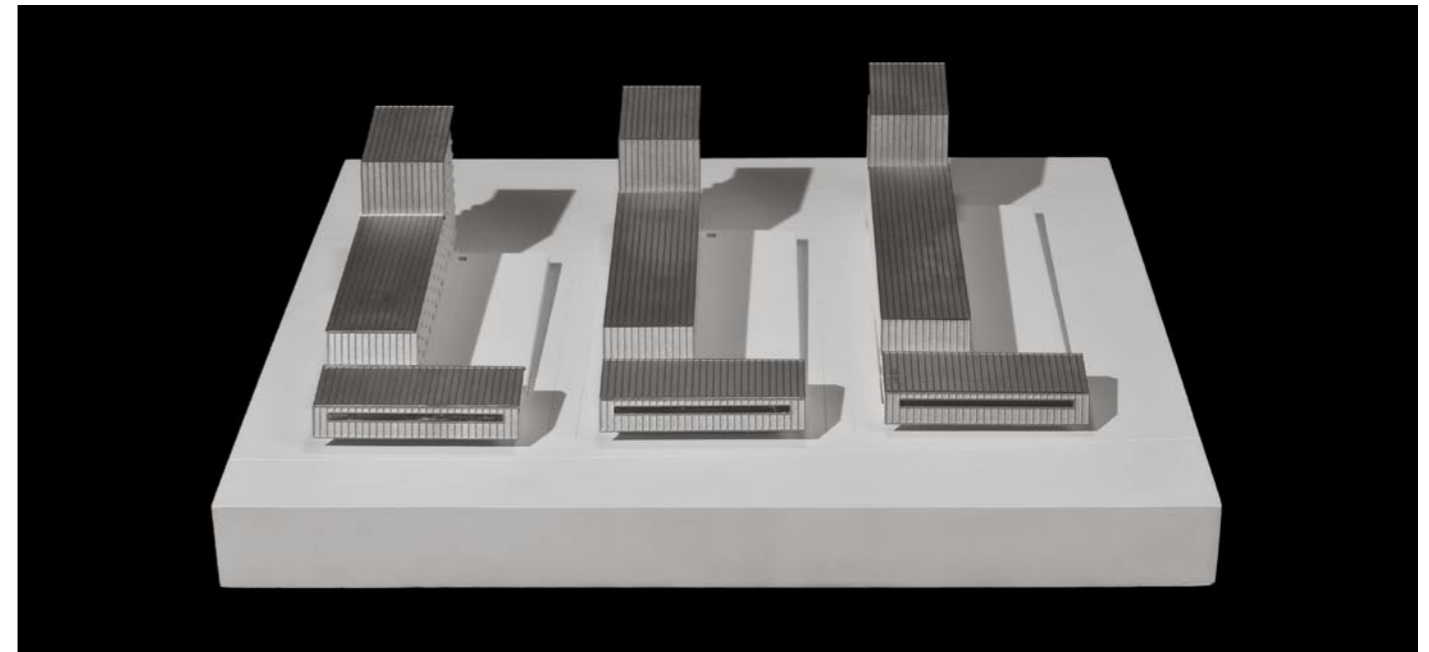
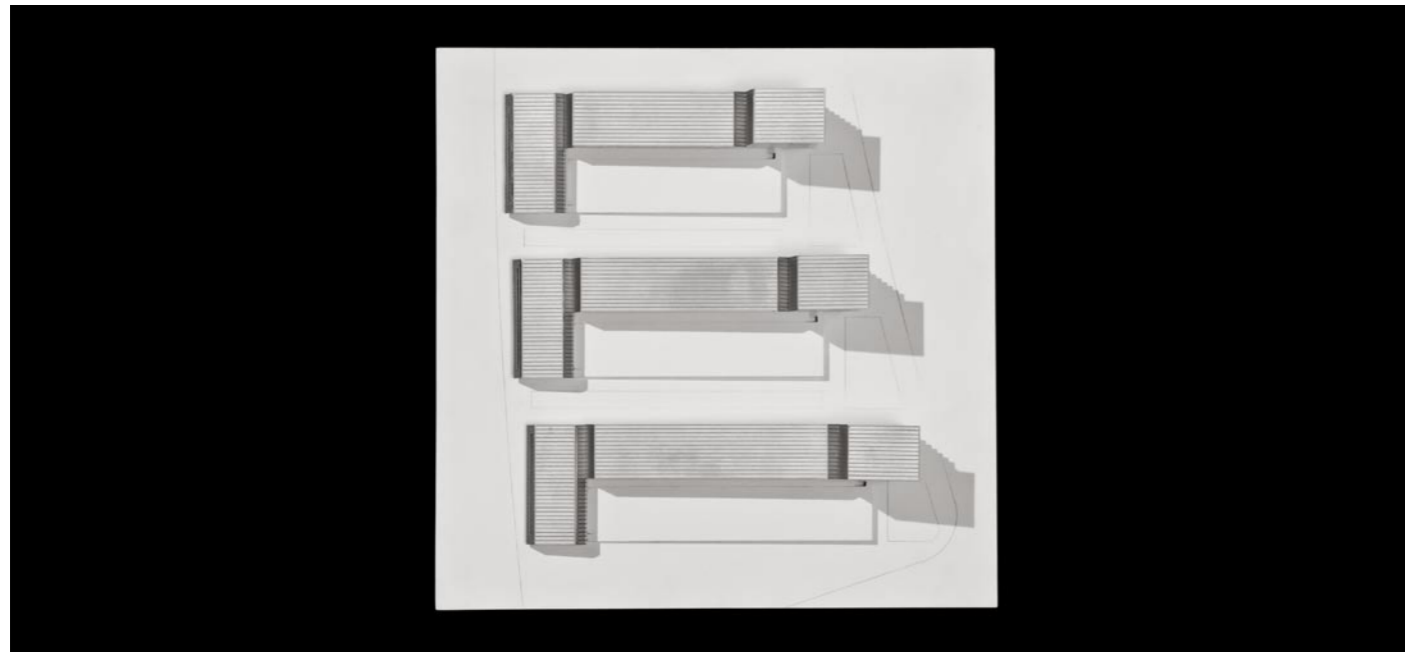
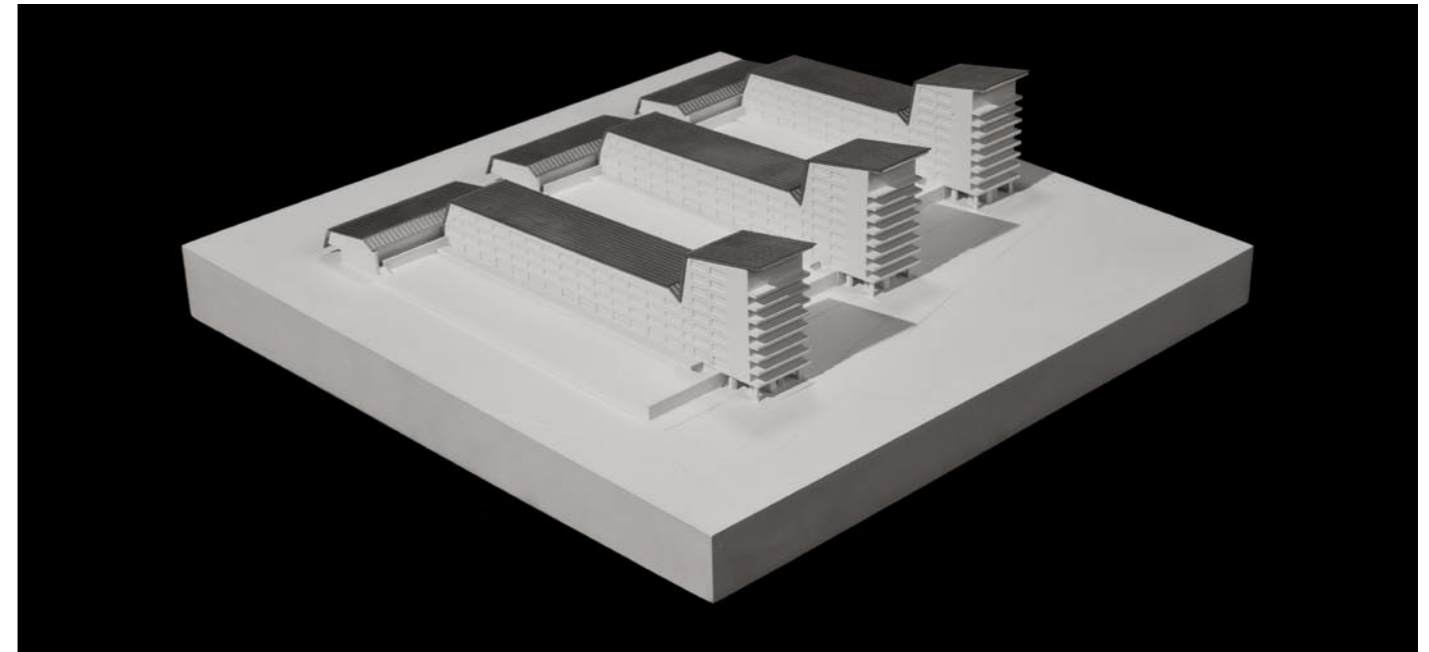
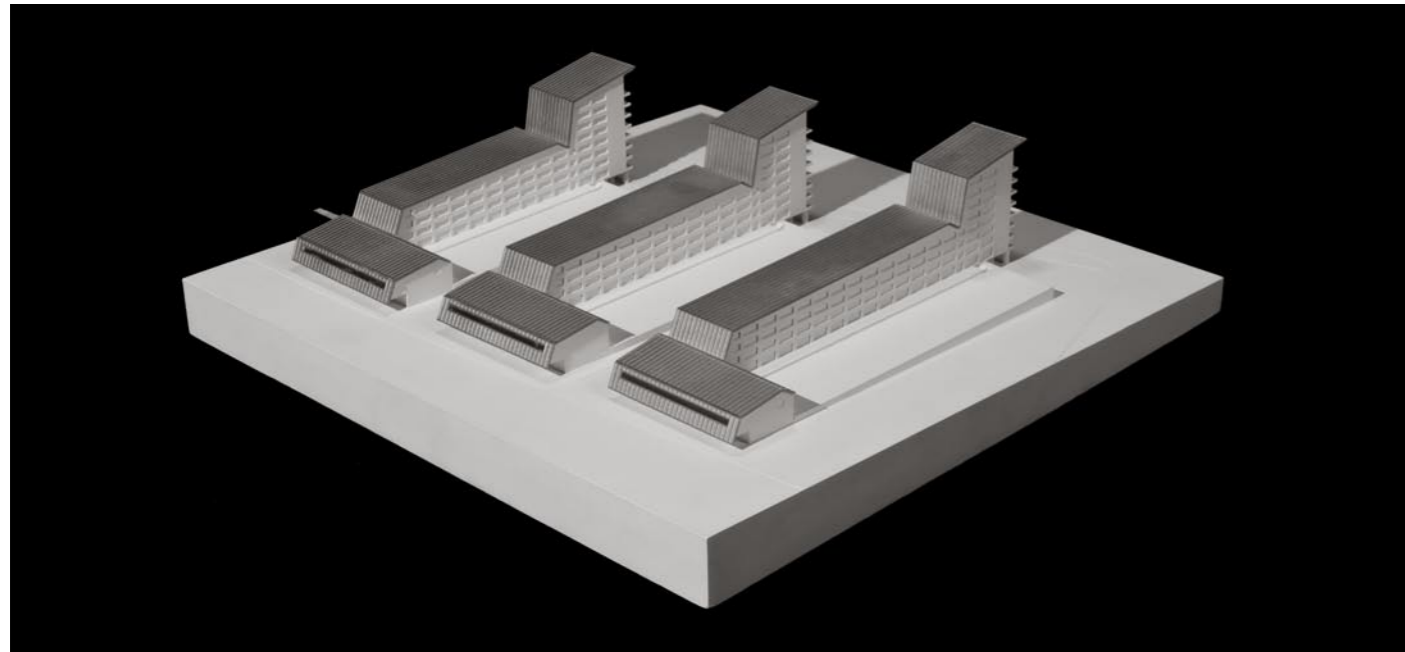
Publication's title: Residential blocks conformation at world fair Expo 98, Lisbon  
 Typology: Residential, Commercial  
 Client: Parque Expo 98 S.A.  
 Surface: 40.164 m<sup>2</sup>  
 Year: 2001  
 Status: Competition



REPORT

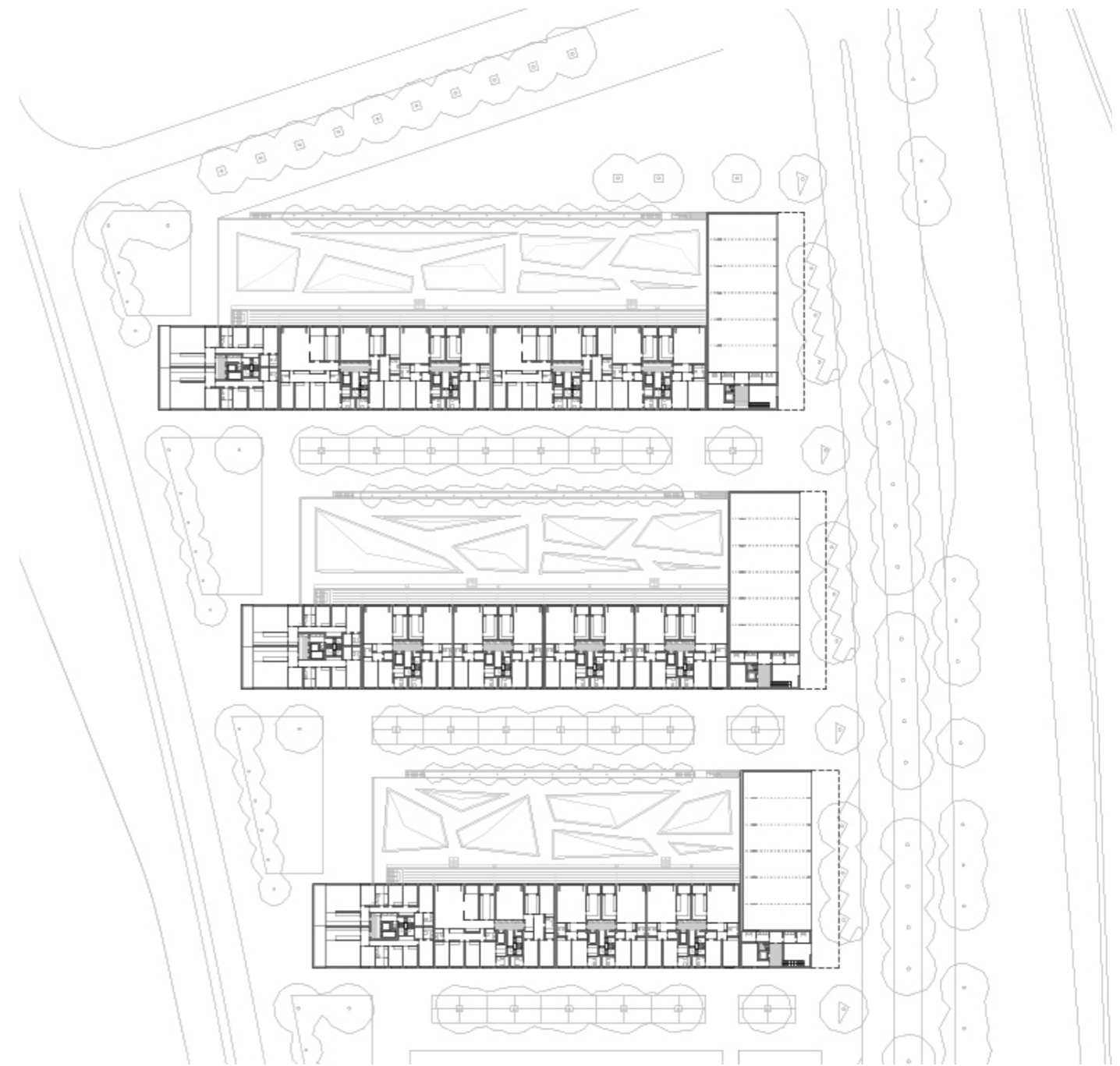
The large infrastructures constructed for the Lisbon Expo have served to regenerate an old industrial plot next to the Tajo's estuary as an area for mixed uses. Next to the bridge known as Vasco de Gama, a series of residential blocks -whose uses, alignments and heights were determined by the current regulations-, shall participate in this transformation with a total of 135 housing units. In search of a precise profile that could be pointed out from a distance, the roof folds successively to unify the uneven volumes foreseen in the plan, made up of an eight-floor tower, four-storey linear block and a small, two-storey transversal building. On the first floor, a large terrace is attached to the general L-shape configuration -providing the flats with two orientations- in order to hide the parking area. The main role played by the silhouette is highlighted by side elevations that are deliberately flat and neutral and so contrast with the continuous balconies of the south façade, which enjoy panoramic views of the estuary and city.





Detailed Exterior Views

Detailed Interior Views



General floor

**Residential blocks conformation at world fair Expo 98.  
Lisbon, Portugal**

**MAIN DATA**

Client: Parque Expo 98 S.A.  
Address: Via do oriente esq Rúa Chen He. 1190 Sacavém. Lisbon, Portugal  
Type: Residential, Commercial  
Status: Competition

**DATAS**

Competition: -  
Design of project: 2001  
Construction: -  
Implementation: -

**SURFACES**

Site: 21.802 m<sup>2</sup>  
Main building: 28.632 m<sup>2</sup>  
Other buildings: 11.532 m<sup>2</sup>  
TOTAL: 40.164 m<sup>2</sup>

**PROJECT TEAM**

Main Architect: Cruz y Ortiz Arquitectos  
Collaborators: -  
Local Architect: -  
Interior design: -  
Lighting design: -  
Landscape architect: -  
Restoration architect: -  
Digital imaging: -  
Model: -  
Photography: -  
Structural engineering: -  
Climate engineer: -  
Building physics advisor: -  
Fire safety specialist: -  
Health and Safety: -  
Urban planning: -  
Survey: Cruz y Ortiz Arquitectos  
Site control: -  
Contractors: -