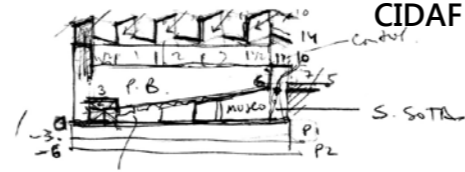


City of Flamenco. National Auditorium,
Museum and School of the Art of Flamenco,
CIDAF



Jerez, Spain

REPORT

The growth of Jerez towards the North -limited in the South by the strong drop in levels where we can find the great wineries- has left its historic centre in an eccentric position. The business, economical and institutional life -which take place mainly along the axis coincident with the former border of the city walls in the Northeast- and a lack of North-South traffic permeability are the starting points of the present deterioration of major part of the historic centre.

We suggest to improve the connection between the competition area towards the Northeast, not building in the smaller plot. As a consequence, the whole brief is concentrated and compressed in a single building within a rectangular plot, a geometrically emphatic floor plan which contrasts with the picturesque surroundings, enhance the condition of streets and creates a big and public open space towards the North and East, playing a similar role as that of the Plaza de Belén in the south of the building regarding permeability and access.

It relies in our will to connect North and South where the section can be deduced, an inclined plan linking both squares -the existing one and the one created- which symbolically strengthens its passable nature and underlines its public condition in a strong residential environment. This space, gathering the auditorium and the access to the museum -two traces, two carved marks on the plan- could even function as a big covered square in some occasions.

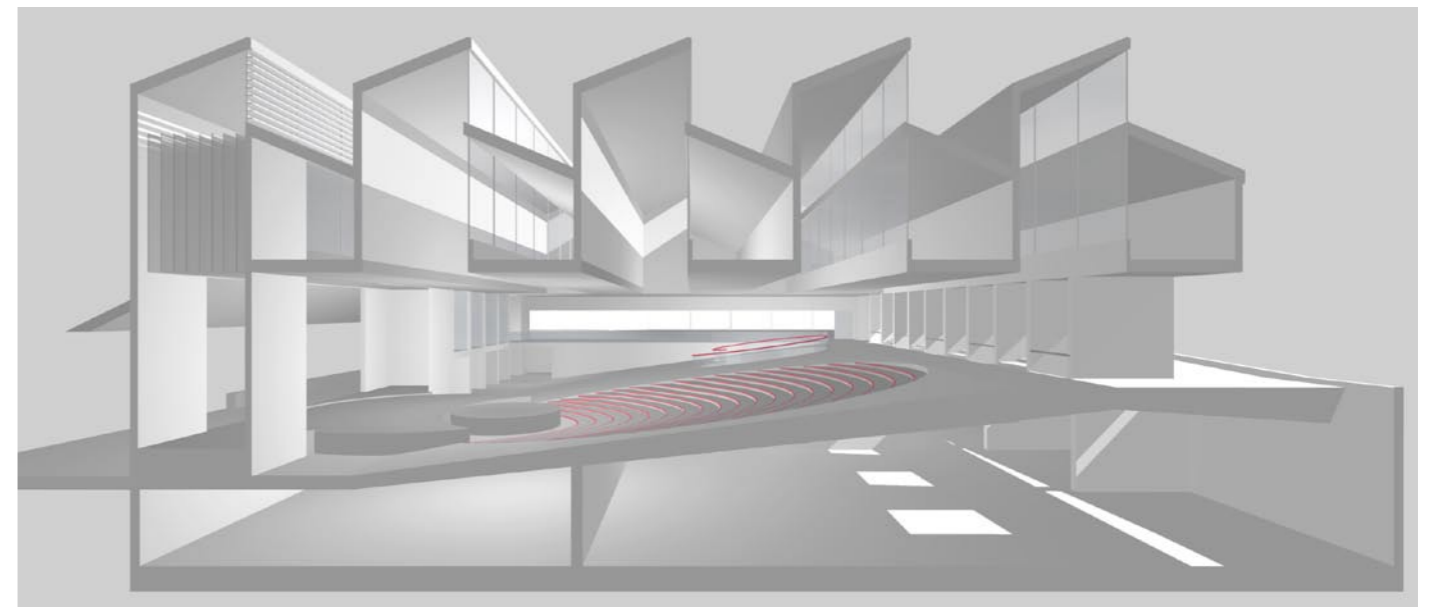
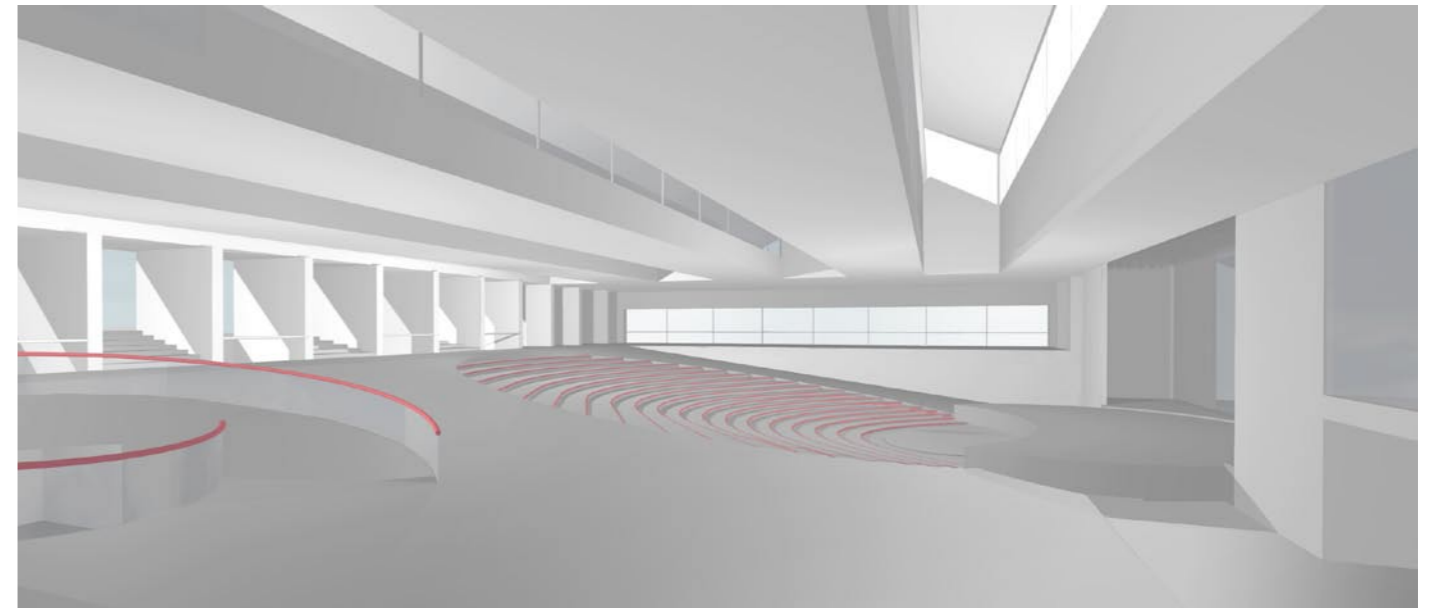
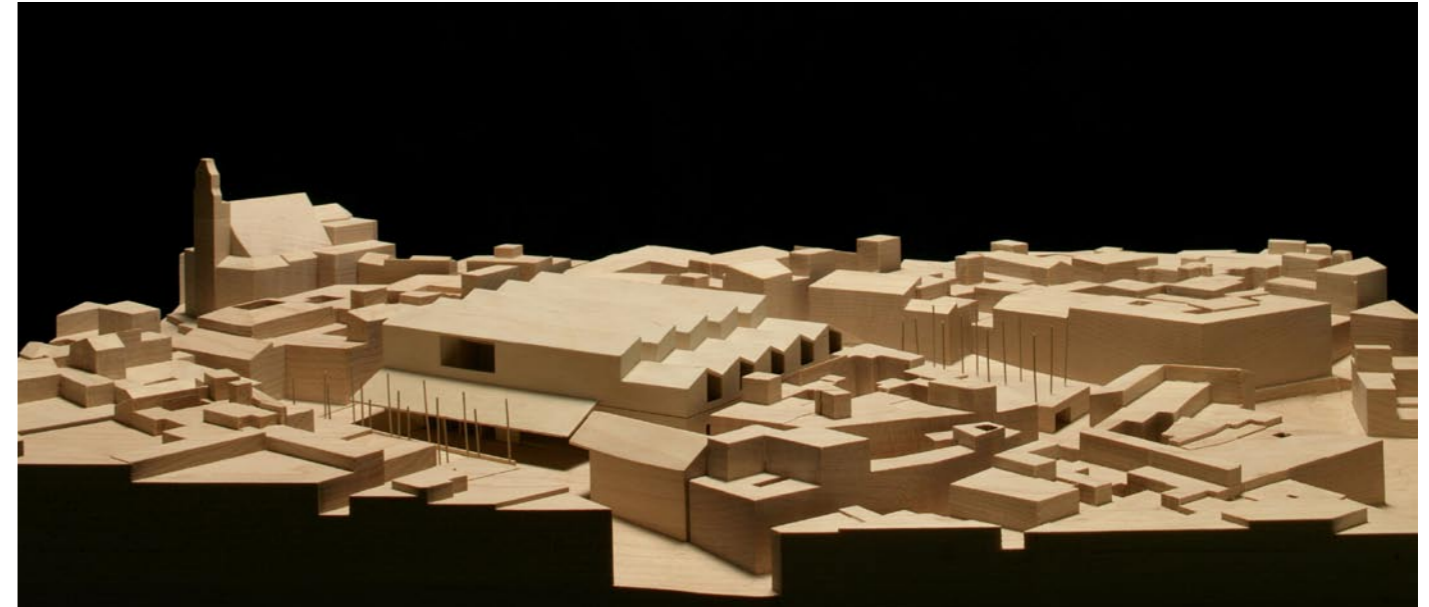
The Auditorium allows different audiences according to the kind of event. Sliding doors, vertical ceilings and curtains - assuring its good acoustics- allow the subdivision of the space as to the intimacy required. Bringing the mixture of uses to its limits can be seen by the lateral juxtaposition of the cafeteria and the gymnasium in the central space what guarantees that activity and spectacle never lasts.

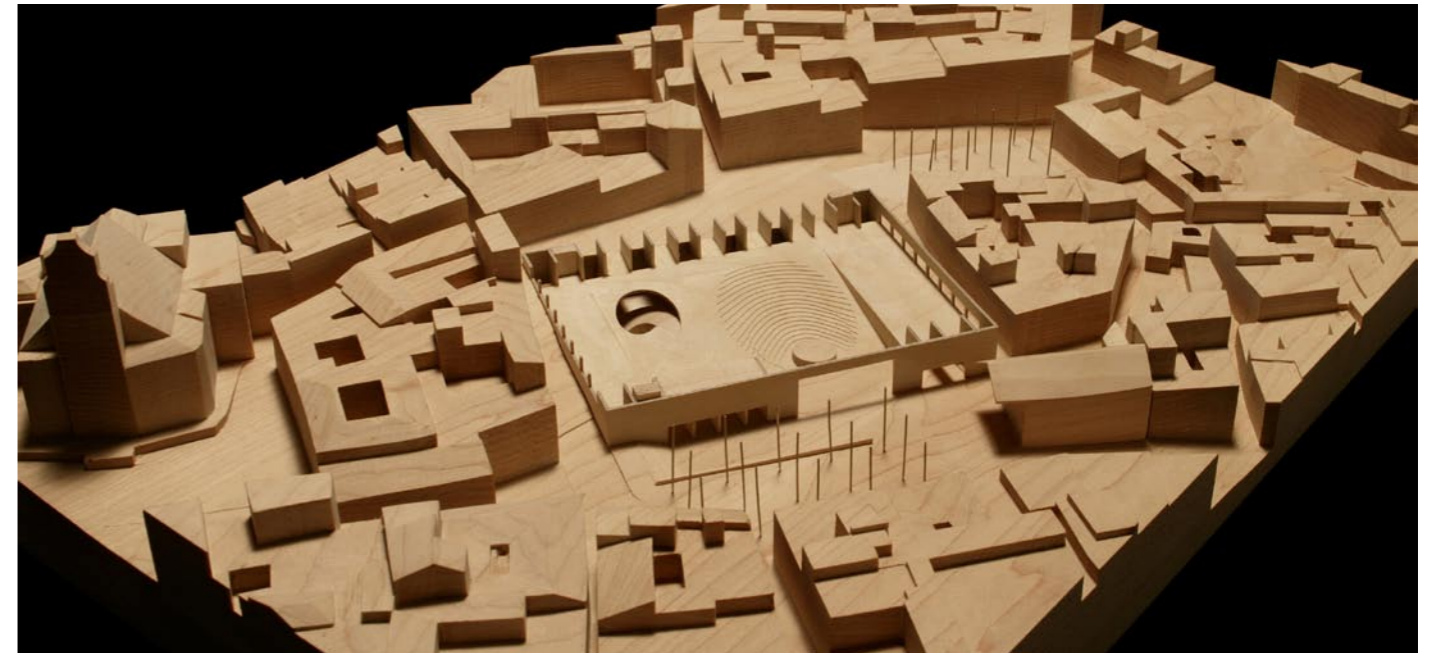
The museum is planned under the inclined plan as it is its access, and its exhibition galleries organized on both sides of a main circulation axis zenithally illuminated.

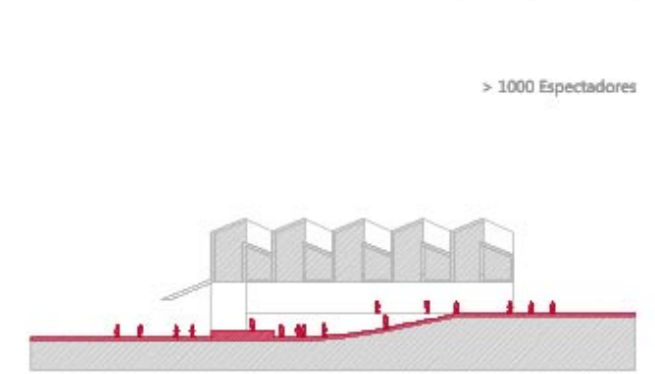
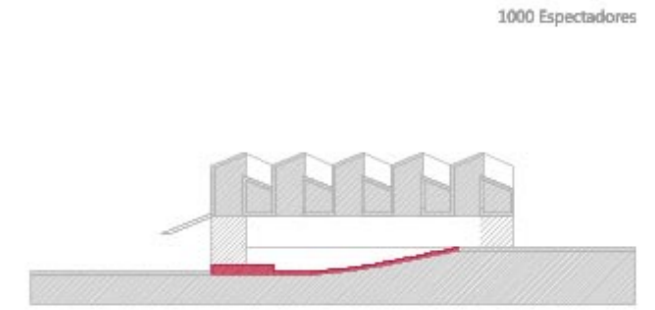
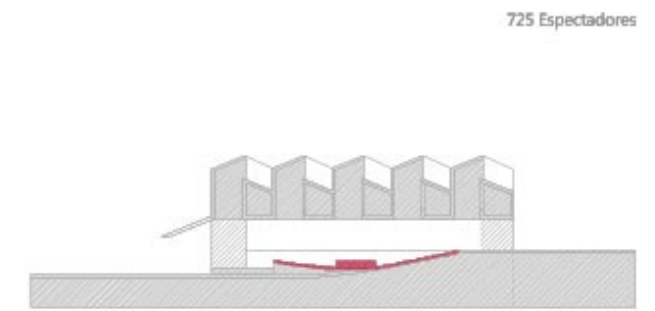
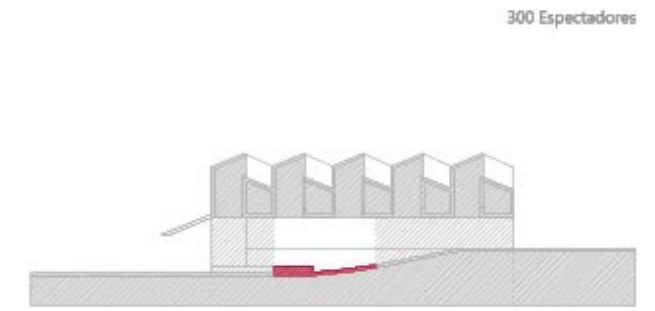
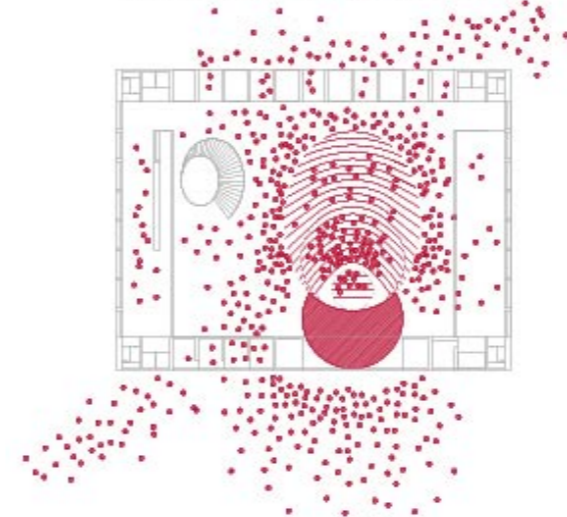
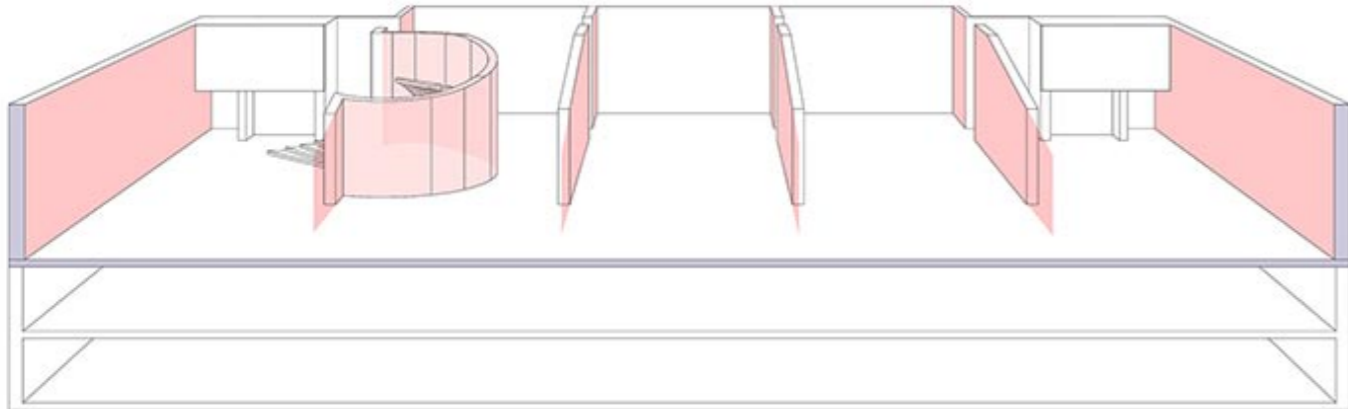
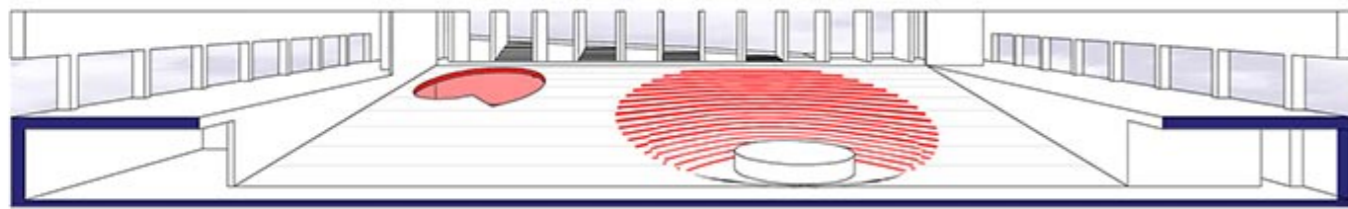
A unified structure able to cover the big structural span required is set out over the big central space and embraces the school of flamenco and the documentation centre.

The skylights included in this structure -also useful as technical footbridges and backdrop stage- overlook the auditorium and visually incorporates the already mentioned uses onto the big central space -a real ceiling "with eyes"- . Its arrangement at different heights break down the emphatic and strong site

Publication's title: City of Flamenco, Jerez, Cádiz
 Typology: Education and culture
 Client: Urbanism Management, City of Jerez
 Surface: 11.871 m²
 Year: 2004
 Status: Competition







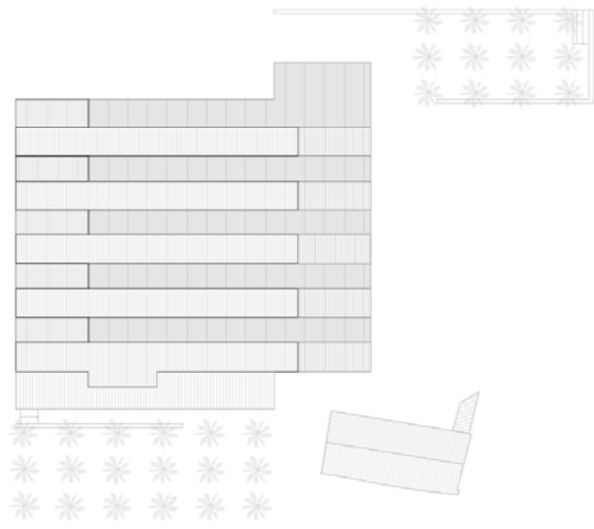
300 Espectadores

725 Espectadores

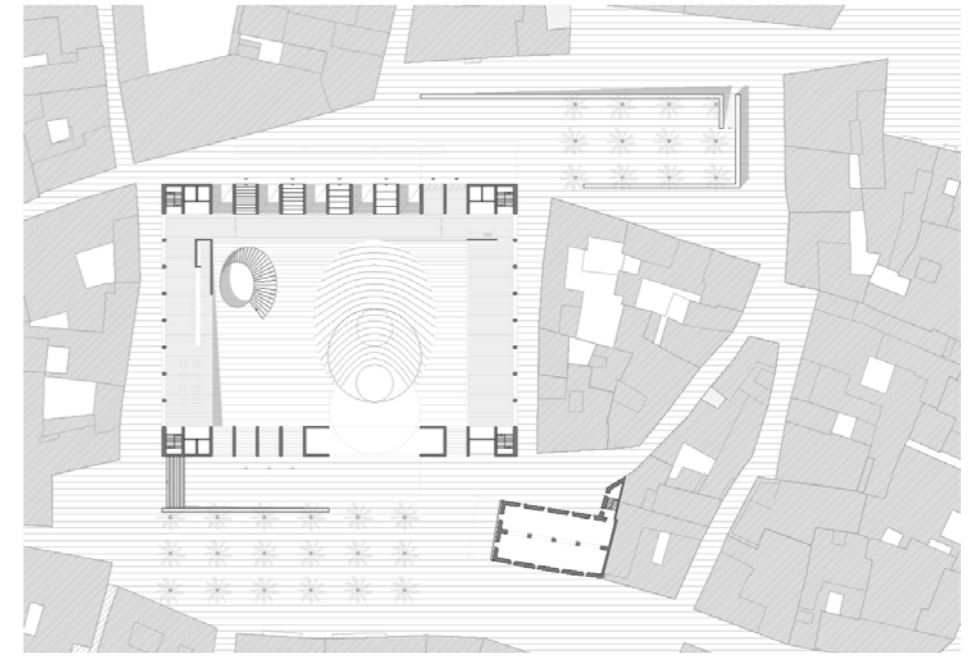
1000 Espectadores

> 1000 Espectadores

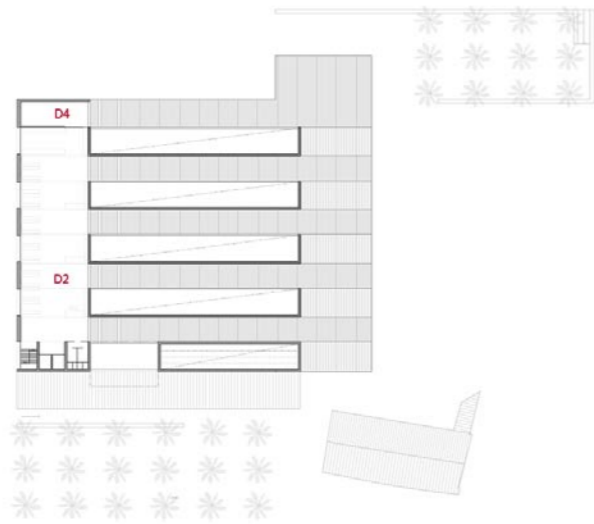
Roof floor



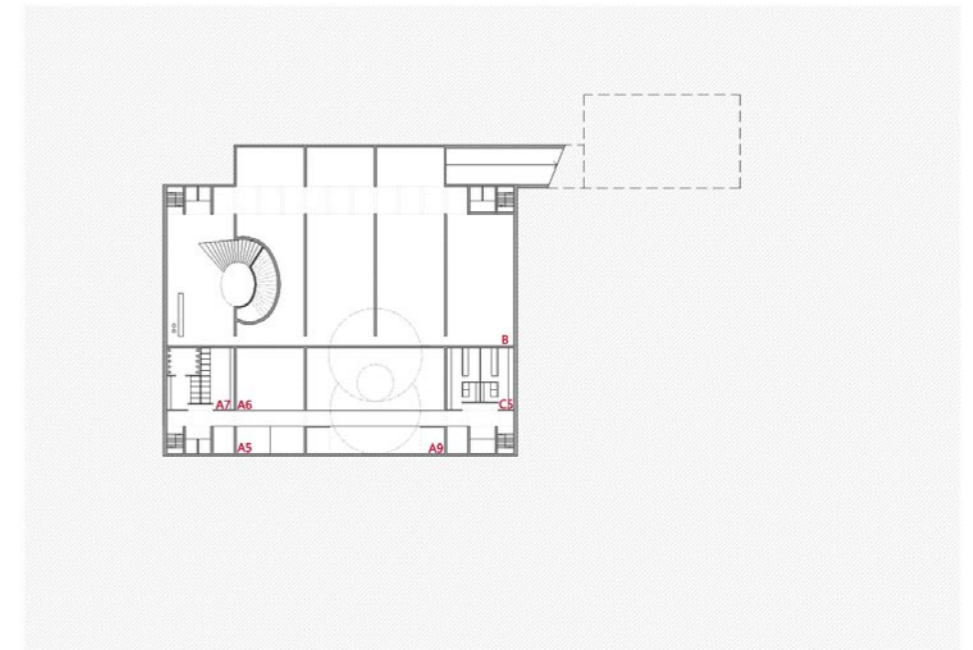
Ground floor



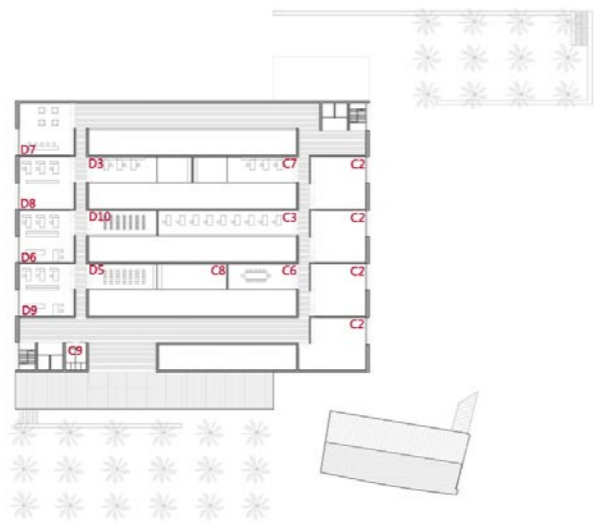
+13.00m floor plan



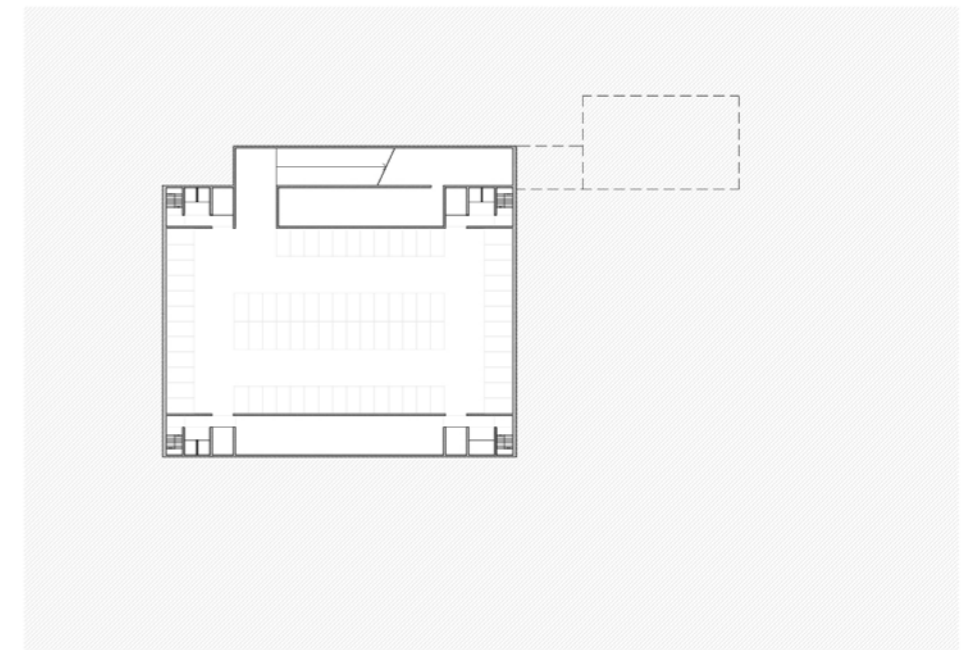
-2.50m floor plan

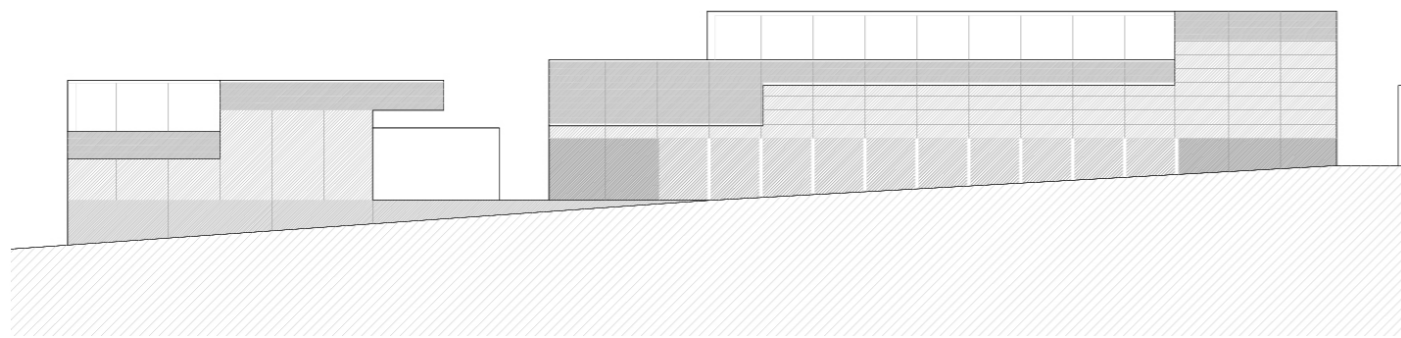


+9.50m floor plan

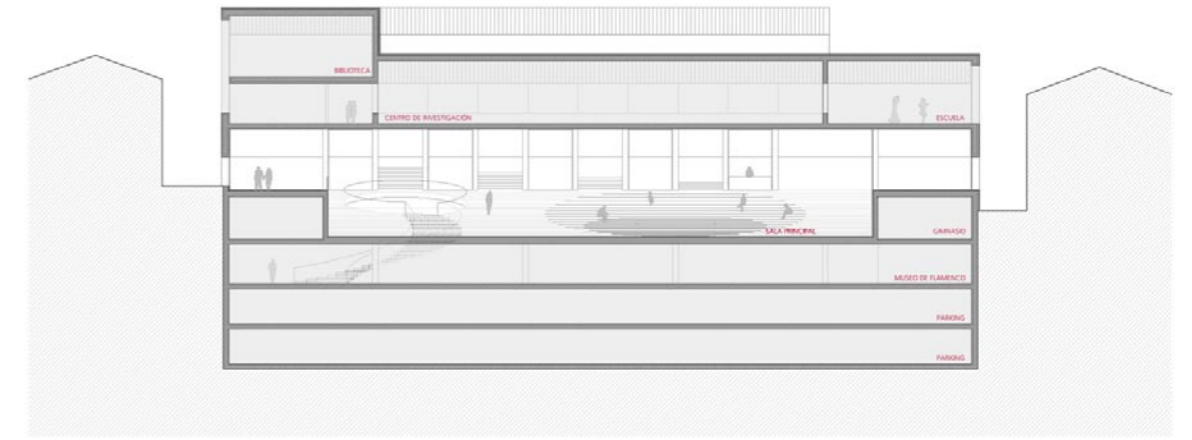


-8.50m floor plan

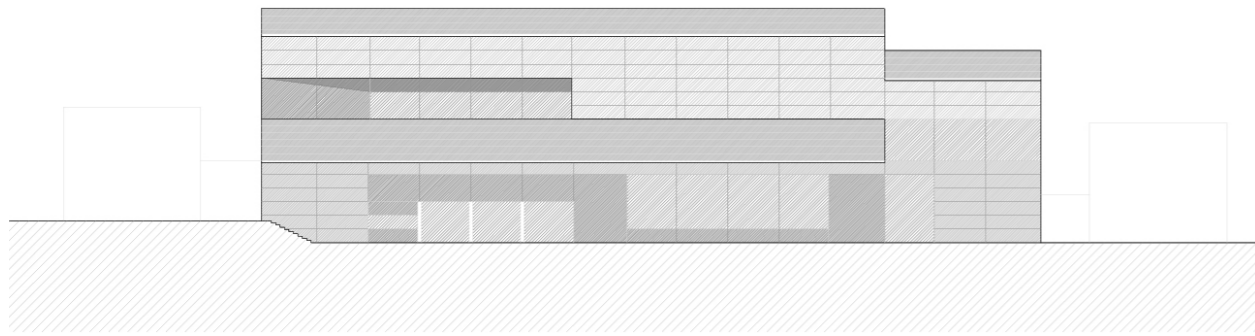




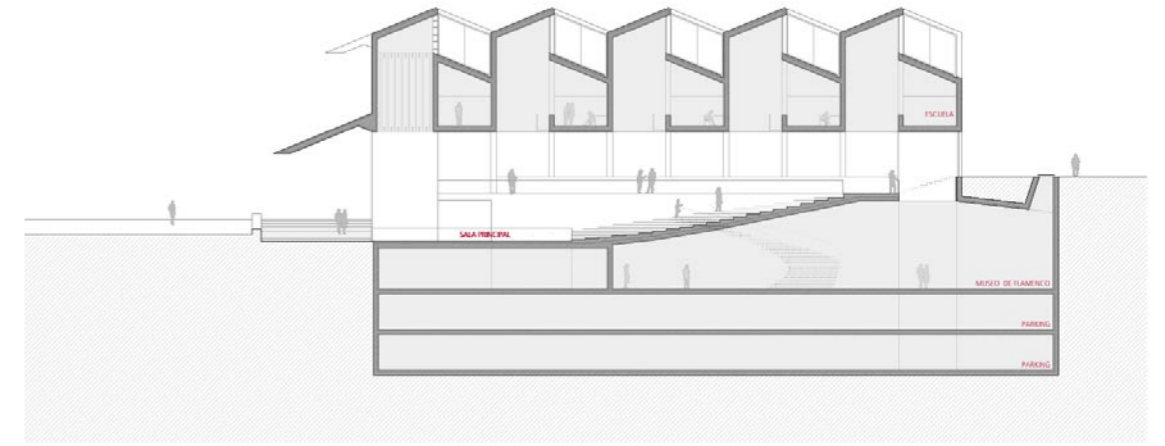
Northeast Elevation



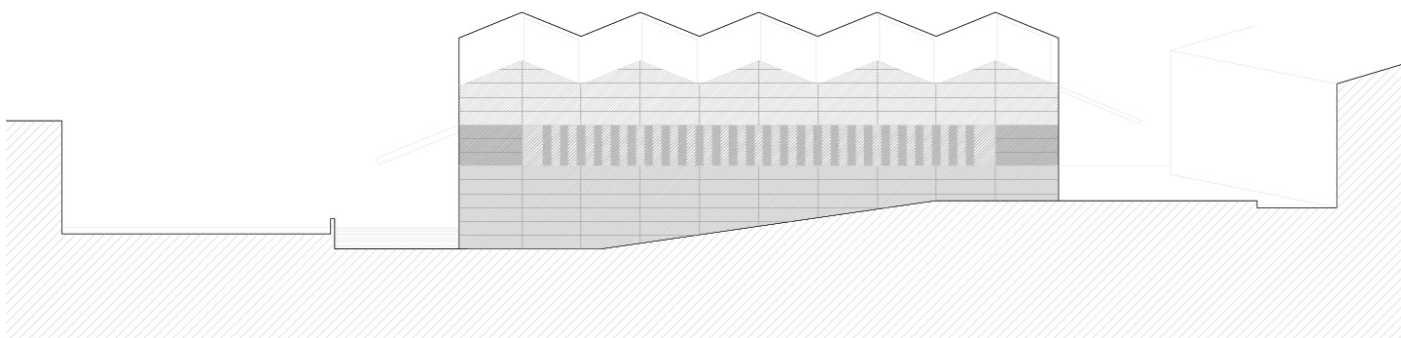
Longitudinal section



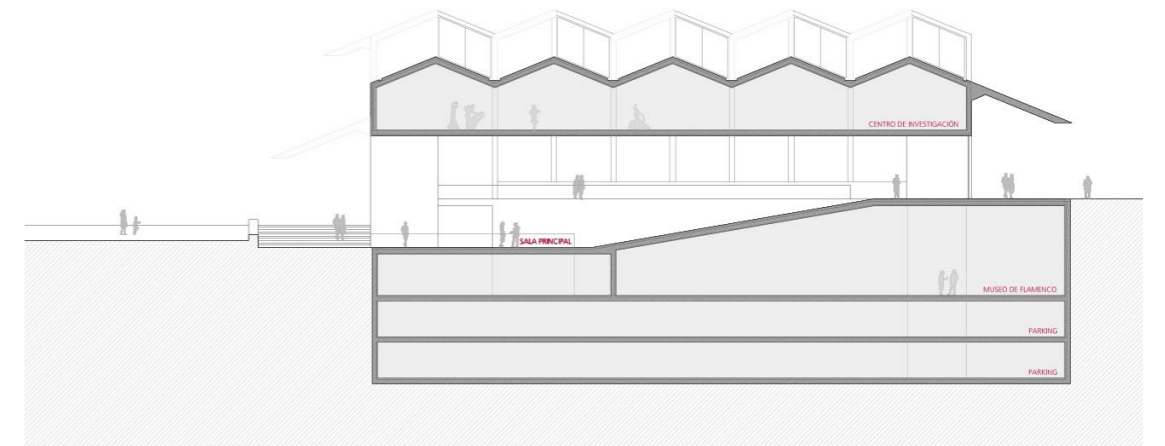
Southwest Elevation



Cross section



Southeast Elevation



Cross section

City of Flamenco. National Auditorium, Museum and School of the Art of Flamenco, CIDAF. Jerez, Cádiz, Spain

MAIN DATA

Client: Urbanism Management, City of Jerez
Address: Plaza de Belén. 11403 Jerez de la Frontera. Cádiz, Spain
Type: Education and culture
Status: Competition

DATAS

Competition: 2004
Design of project: 2004
Construction: -
Implementation: -

SURFACES

Site: 3.405 m²
Main building: 11.871 m²
Other buildings: -
TOTAL: 11.871 m²

PROJECT TEAM

Main Architect: Cruz y Ortiz Arquitectos
Collaborators: -
Local Architect: -
Interior design: -
Lighting design: -
Landscape architect: -
Restoration architect: -
Digital imaging: -
Model: -
Photography: -
Structural engineering: -
Climate engineer: -
Building physics advisor: -
Fire safety specialist: -
Health and Safety: -
Urban planning: -
Survey: -
Site control: -
Contractors: -