

Science Center Park Enterprise Incubator

Kassel, Germany



REPORT

The new Kassel University Campus Plan reflects a great confidence placed in floors as an instrument capable of ensuring ultimate order in the group. A series of five, six and seven-sided irregular polygons are juxtaposed, creating new spaces and alignments and incorporating pre-existing buildings.

The proposal presented here for the new W.C. suggests using, also inside the building, this same composition mechanism of juxtaposition of "figures" that are as simple as possible. Thus, instead of the two irregular courtyards suggested by the Plan, three have been designed: a rectangular one, another triangular one and a third trapezoidal one, juxtaposed and separated from each other by transparent galleries including staircases that connect the floors.

Having three open spaces makes for a very luminous building. This has made it possible to find a generous solution to the demanding program and to minimise the number of offices that receive light through the inner courtyards.

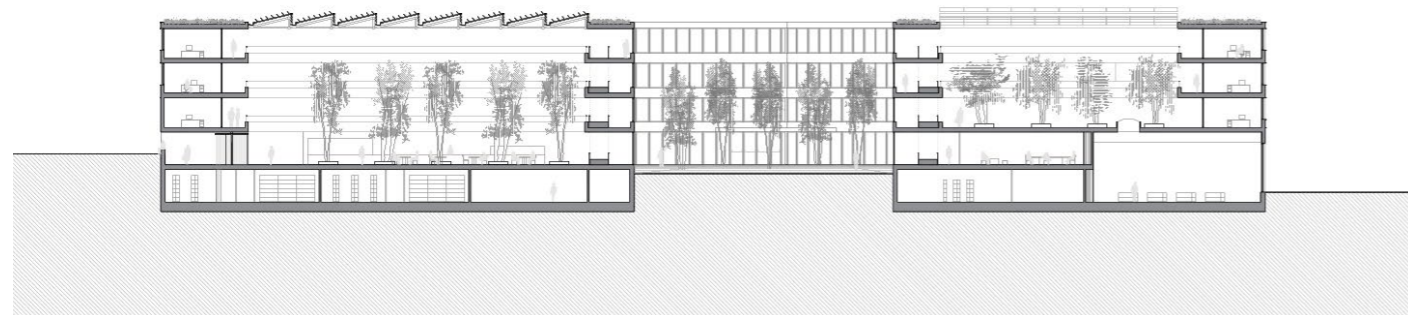
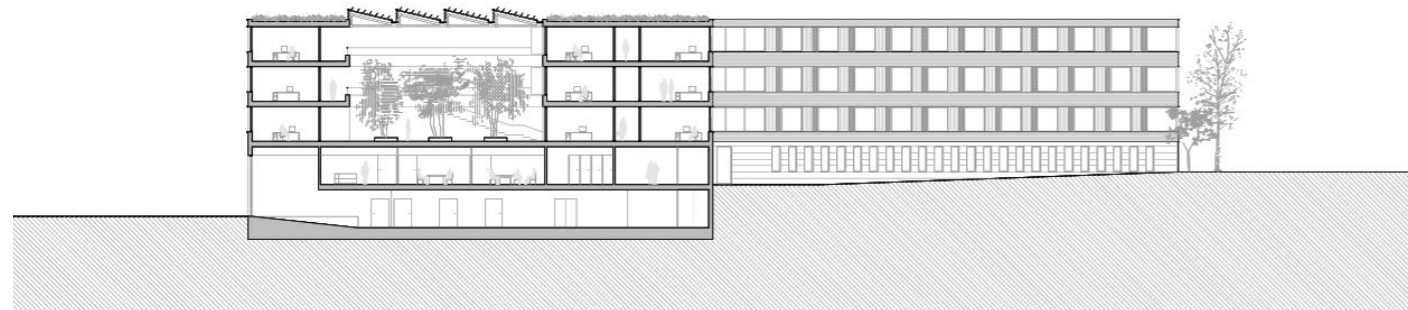
The three open spaces, two atriums and a courtyard are visually connected by the transparency of the main body of the staircases. Besides the climate advantages they offer, the atriums allow for contact and communication among the building's users.

The facade composition gives priority to horizontal lines to give order to the gaps. The finishes will be wood on the upper floors and stone on the bases and ground floor. Inside the atriums, where open and glass surfaces will be larger, the colour white will predominate, painting the wood which will continue to represent the majority of the enclosures.

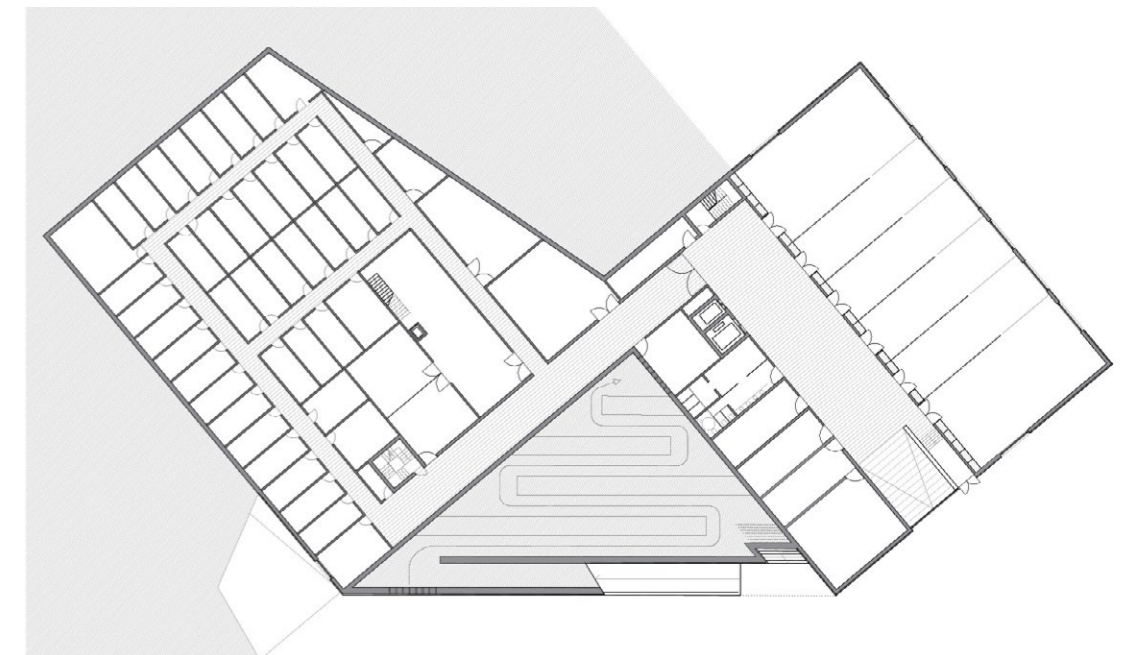
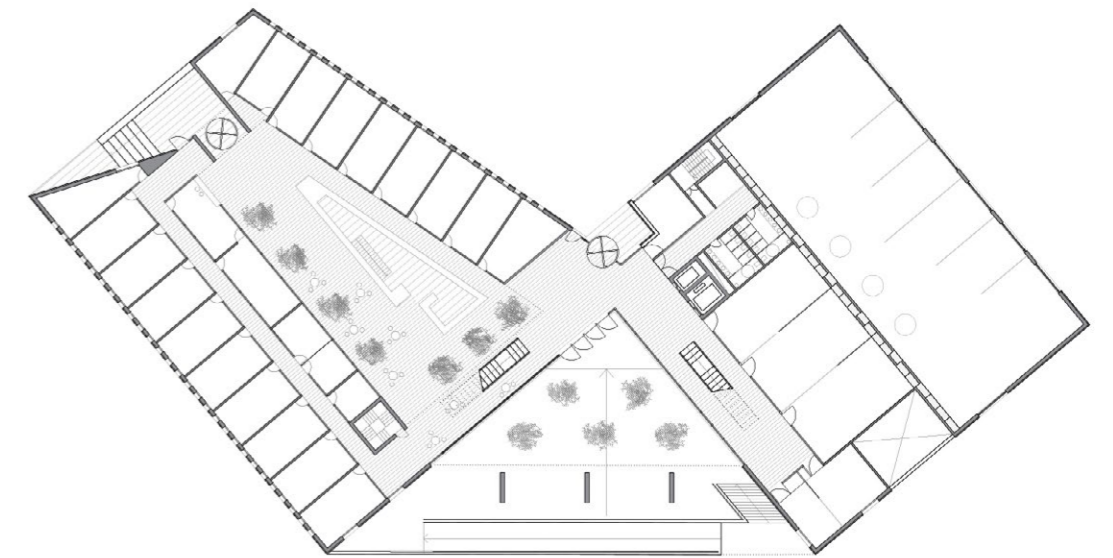
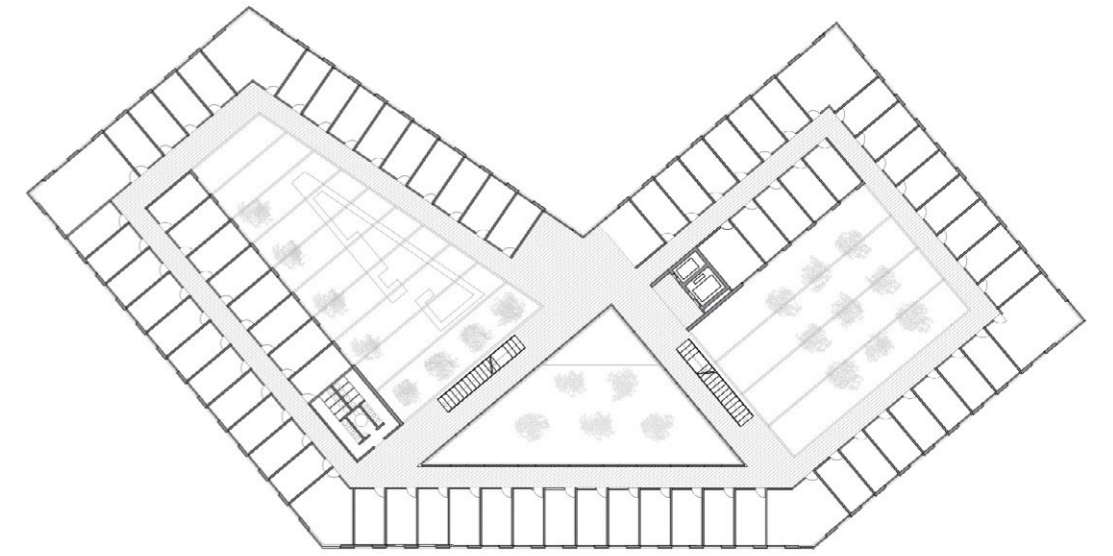
Publication's title: Science Center Park Enterprise Incubator, Kassel
Tipología: Offices
Client: Science Park Center Kassel GmbH
Surface: 13.523 m²
Year: 2010
Status: Competition. Finalist



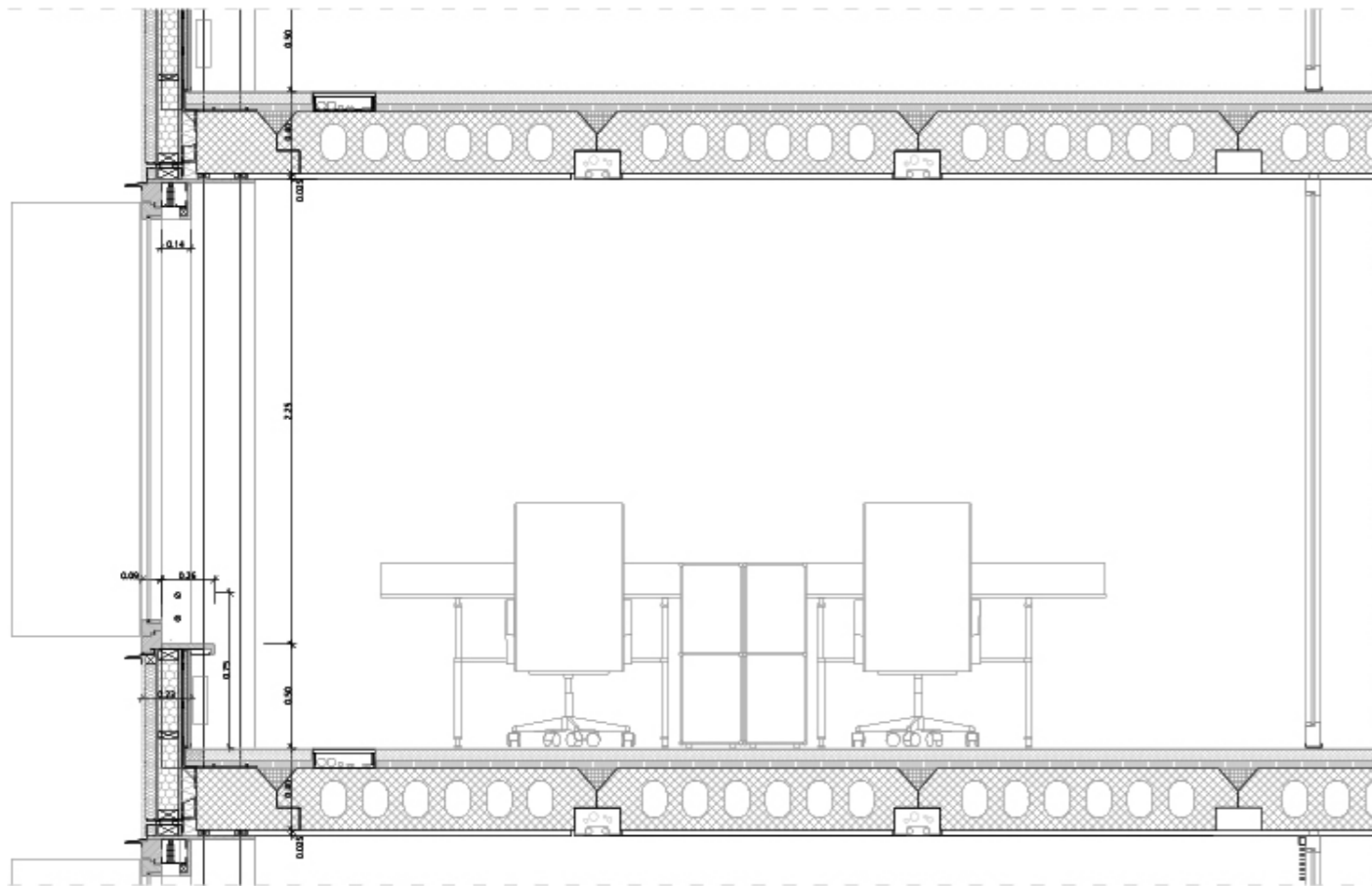
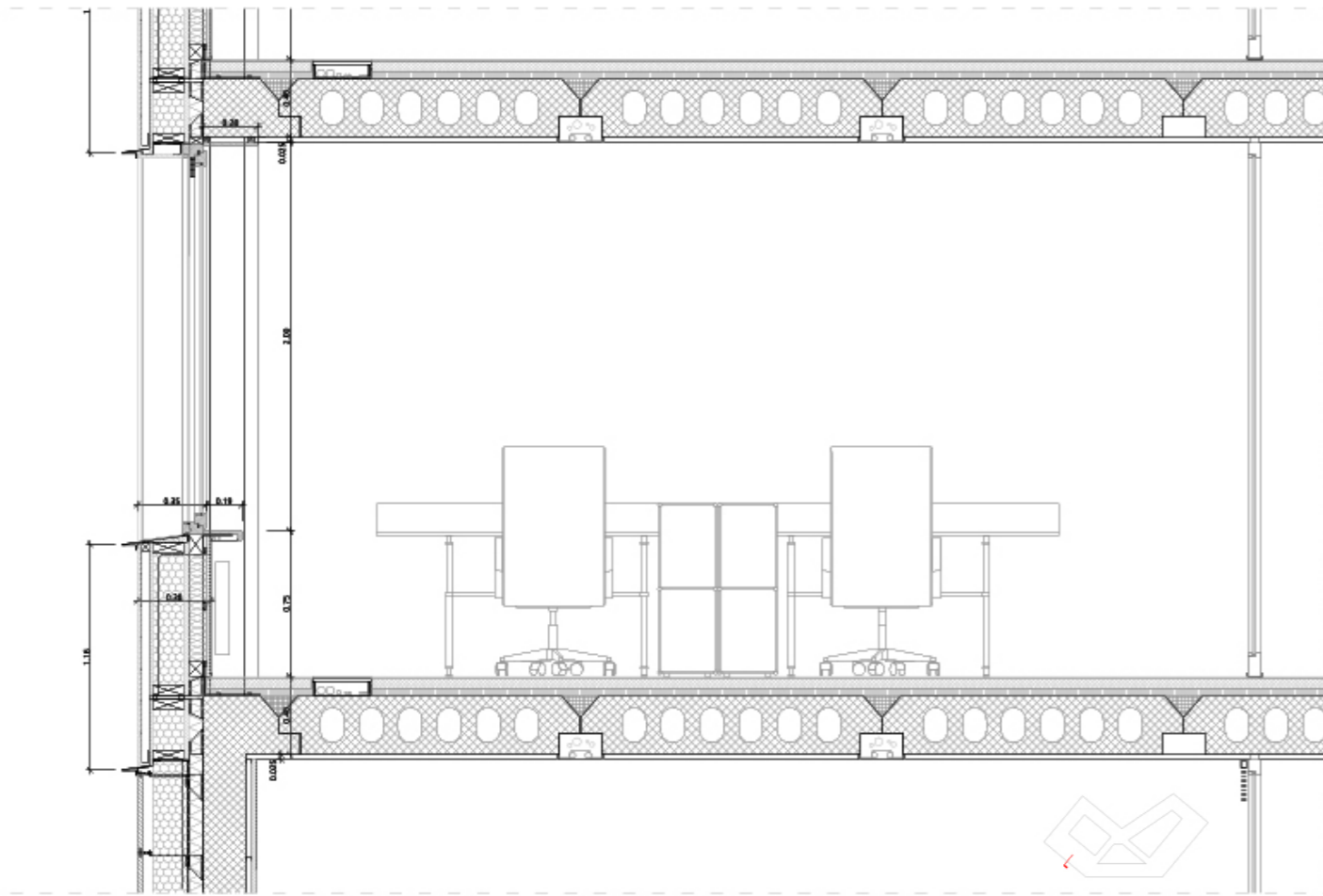




Sections



Floor plans



CyO
Cruz y Ortiz
Arquitectos

TECHNICAL DATA OF THE PROJECT

Science Center Park Enterprise Incubator. Kassel, Germany

MAIN DATA

Client: Science Park Center Kassel GmbH
Address: Liebigstrasse. 34125 Kassel, Germany
Type: Offices
Status: Competition. Finalist

DATAS

Competition: 2010
Design of project: -
Construction: -
Implementation: -

SURFACES

Site: 3.205 m²
Main building: 12.573 m²
Other buildings: 950 m²
TOTAL: 13.523 m²

PROJECT TEAM

Main Architect: Cruz y Ortiz Arquitectos
Collaborators: Teresa Cruz, Luis Gutierrez, Lukas Hoye, Javier Monge, Hector Salcedo, Alejandro Alvarez

Local Architect: -
Interior design: -
Lighting design: -
Landscape architect: -
Restoration architect: -
Digital imaging: Cruz y Ortiz Arquitectos
Model: Queipo Maquetas
Photography: -
Structural engineering: Ingenieurbüro Leiser, Würzburg-Thomas Leiser
Climate engineer: -
Building physics advisor: -
Fire safety specialist: -
Health and Safety: -
Urban planning: -
Survey: -
Site control: -
Contractors: -