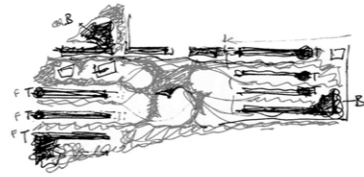


Masterplan for the Campus of Health and Sciences of UGR University

Granada, Spain



Publication's title: Masterplan for the Campus of Health and Sciences of UGR University
 Typology: Education and Culture, Offices, Urban design
 Client: University of Granada
 Surface: 100.360 m²
 Year: 2006-2014
 Status: Built

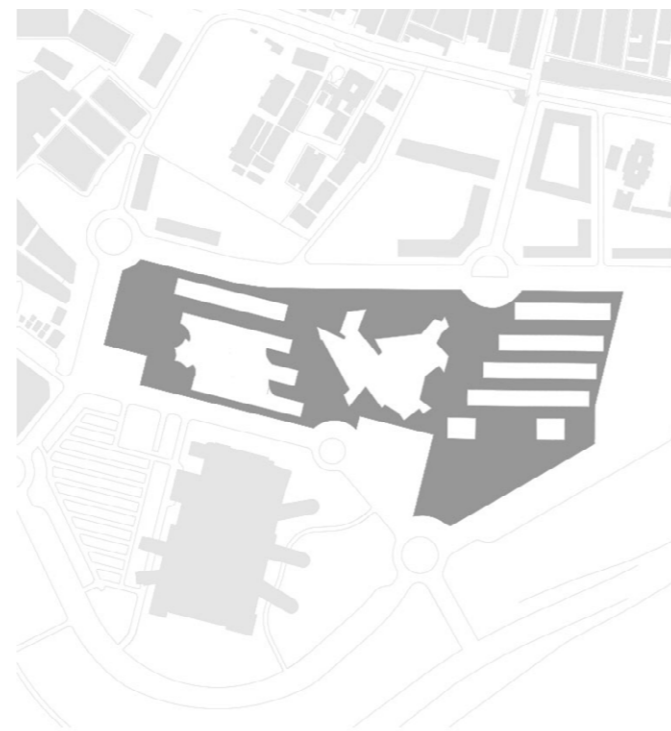


REPORT

Flowing with the natural inclination of the terrain, general movement on the campus finds access to the array of services that are offered in the General Services Building. There can be found the Auditorium, Library and Nursery, as well as restaurants and exhibition rooms.

The expressive will that appears in the ways connecting the main courses on the campus with the General Services Building generates a facility that has a singular, organic shape in consonance with its uses. Such uses -library, museum, cafeteria, and so on- open to free open spaces that are at a lower level than the general height of the site and are delimited by elm plantations.

The most significant volume in the building corresponds to the Auditorium. The Auditorium has a capacity of 1,000 people and is appropriately equipped to host any kind of event that the Universidad de Granada might programme (lectures, plays, auditions, etc.), thus having a multi-functional nature.

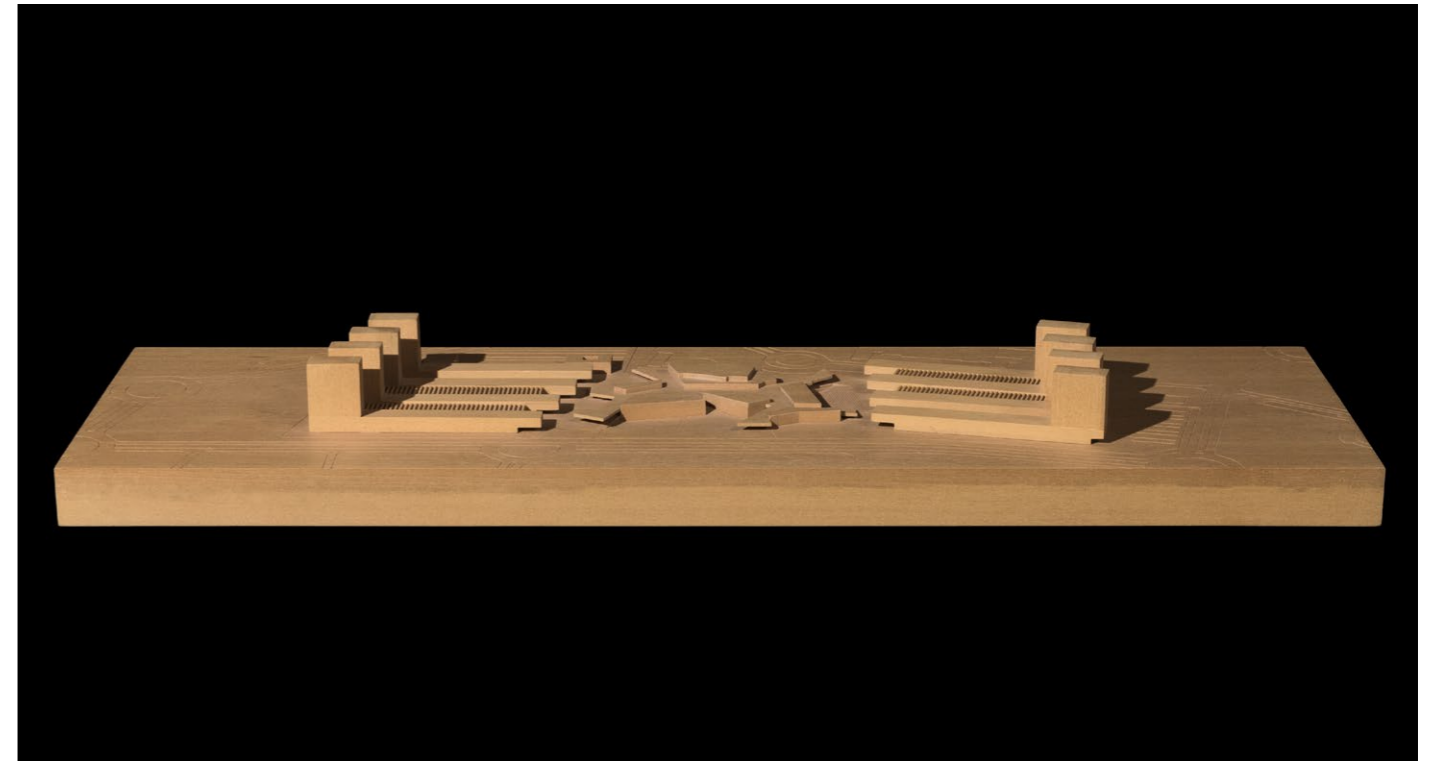


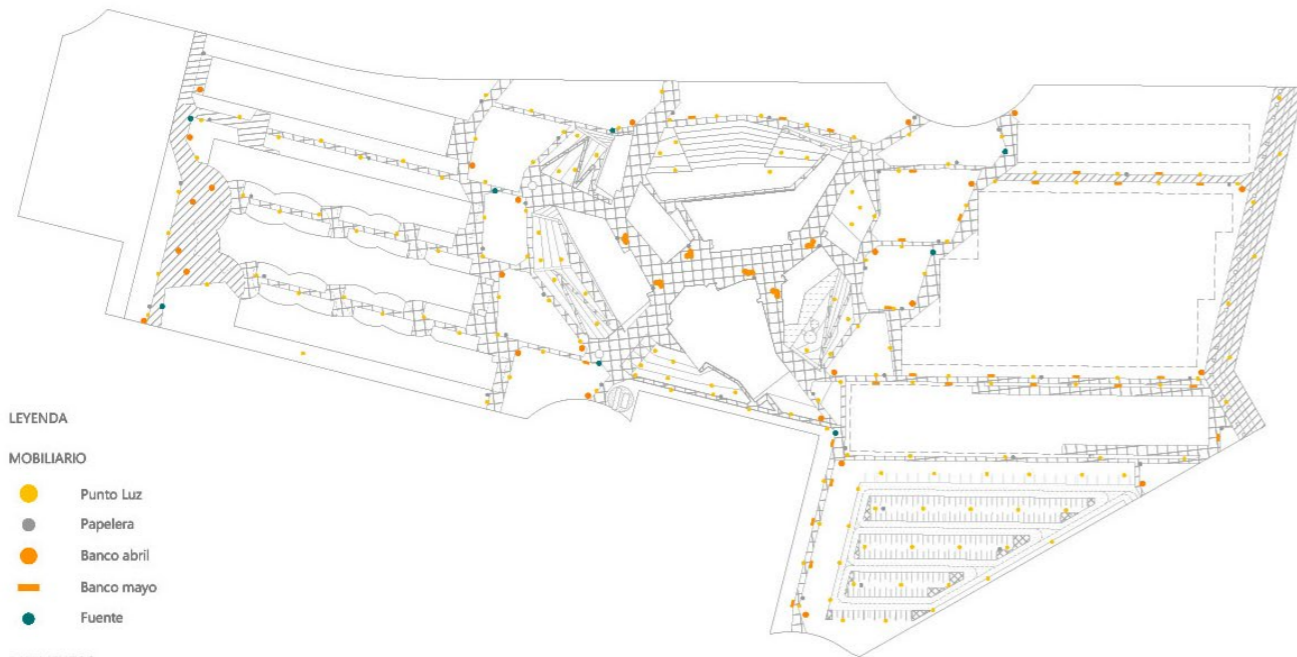






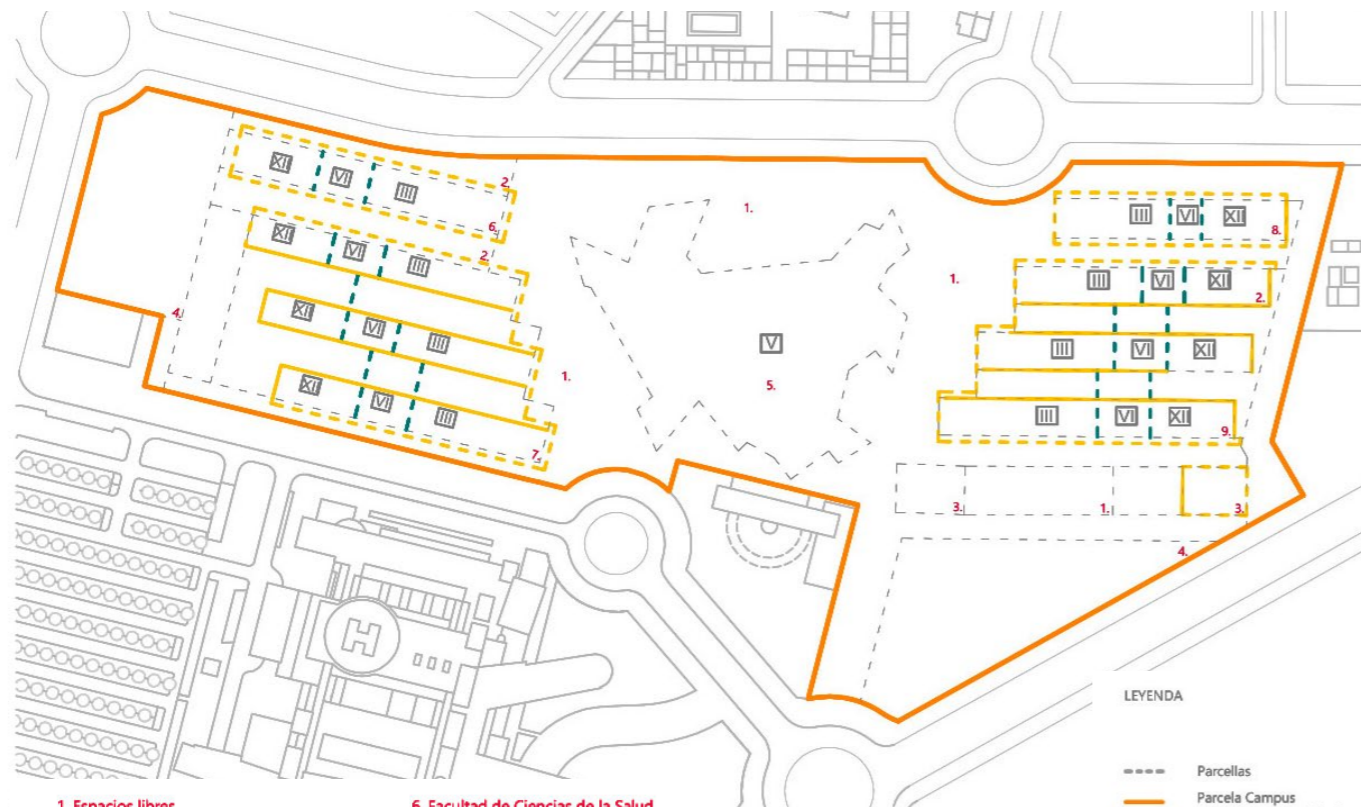






- LEYENDA**
- MOBILIARIO**
- Punto Luz
 - Papelera
 - Banco abril
 - Banco mayo
 - Fuente
- PAVIMENTOS**
- Conglomerado Asfáltico
 - Adoquín granito 10x10 cm.
 - Pavimento de caucho continuo e=4cm.
 - Adoquín granito 10 x 10 cm. T = 20 KN/ m2 Separación con bolardos de Ø 30 cm del mismo material

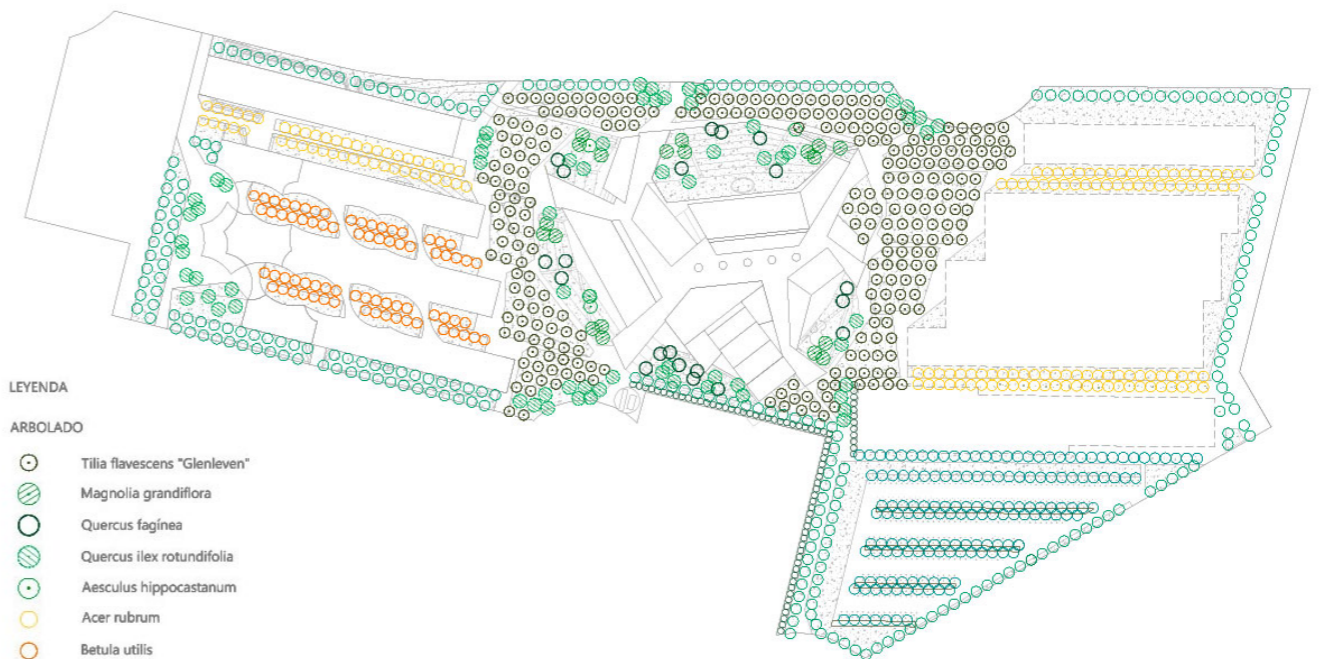
Pavement and urban furniture plan



- 1. Espacios libres
- 2. Universitario libre privado
- 3. Servicios de interés público
- 4. Aparcamiento (hasta 4 plantas bajo rasante)
- 5. Servicios Generales de la Universidad
- 6. Facultad de Ciencias de la Salud
- 7. Facultad de Medicina
- 8. Facultad de Odontología
- 9. Facultad de Farmacia

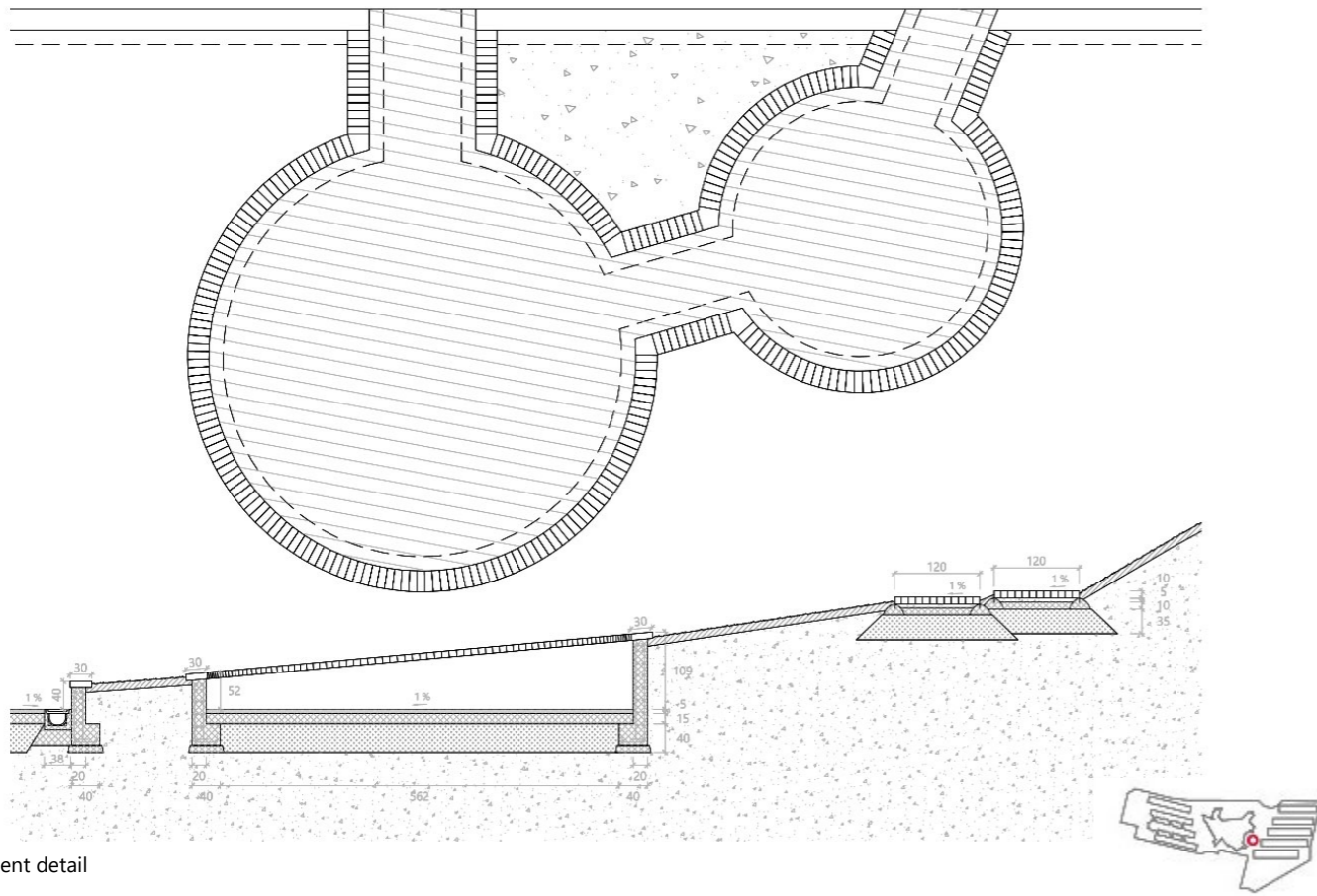
- LEYENDA**
- Parcelas
 - Parcela Campus de Ciencias de la Salud
 - Alineación exterior máxima
 - Alineación interior
 - Alineación máxima cambio de alturas
 - ⊠ Altura máxima

Landscape plan



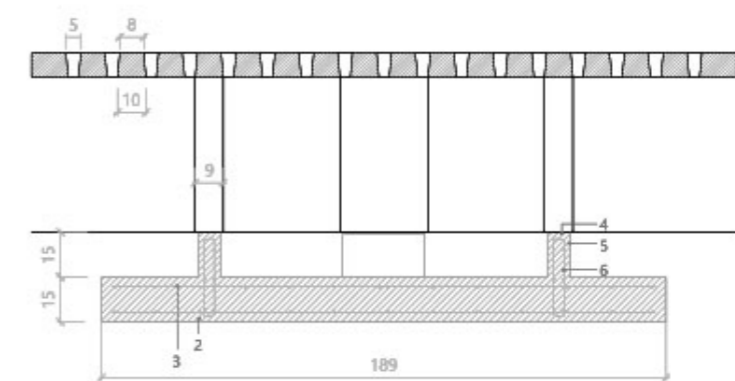
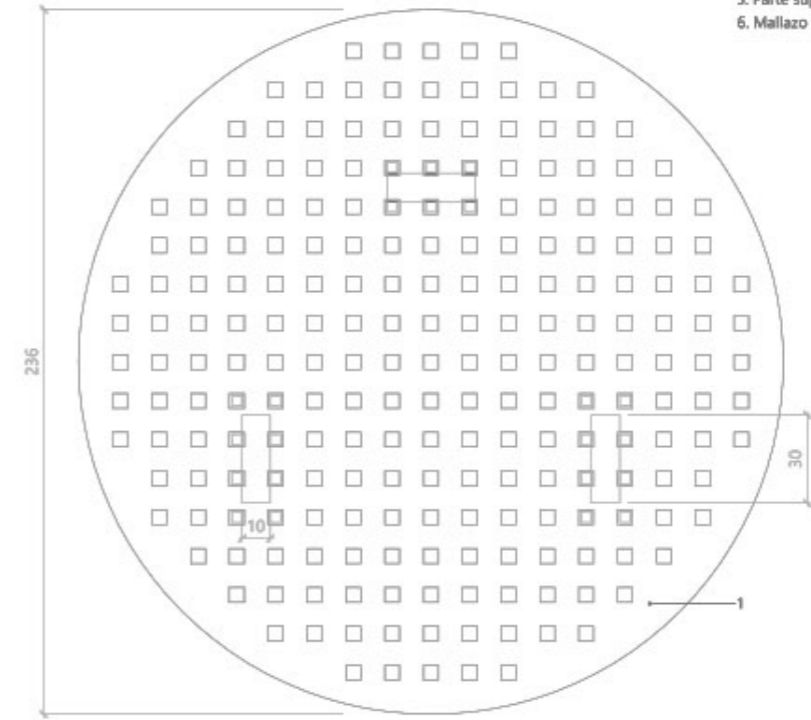
- LEYENDA**
- ARBOLADO**
- Tilia flavescens "Glenleven"
 - Magnolia grandiflora
 - Quercus faginea
 - Quercus ilex rotundifolia
 - Aesculus hippocastanum
 - Acer rubrum
 - Betula utilis
 - Celtis australis
 - Sophora japonica
 - Quercus ilex arbustiva
- ARBUSTIVAS**
- Pennisetum villosum
- TAPIZANTES**
- Prado
 - Hedera helix

Zoning plan

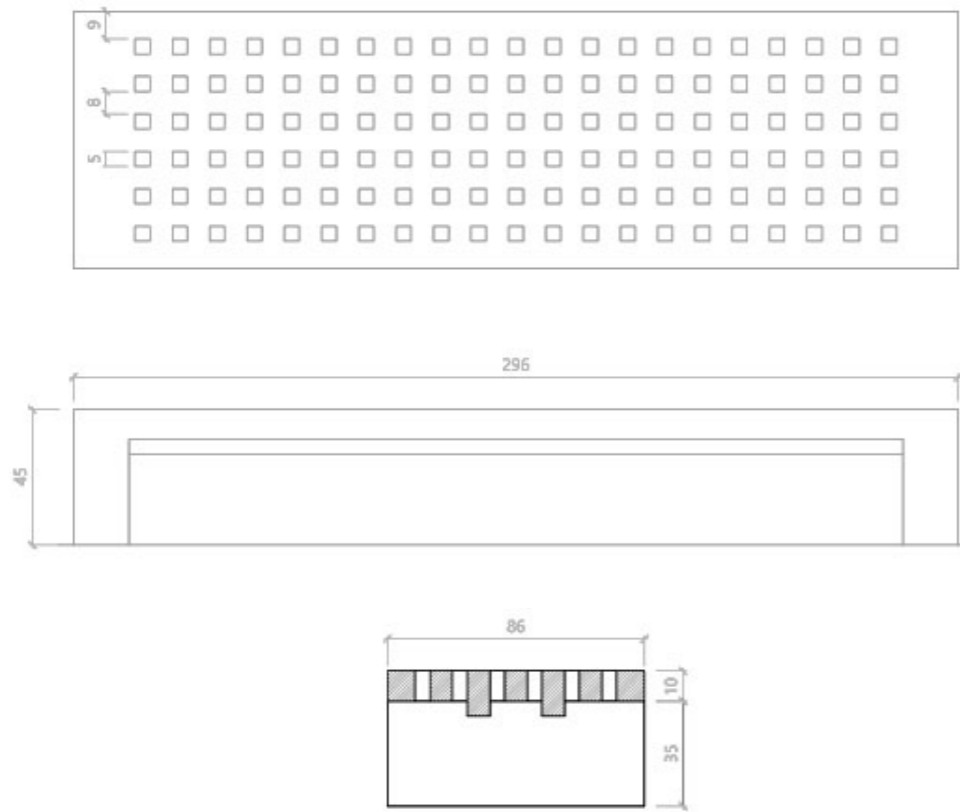


Pavement detail

1. Pieza base de hormigón armado perforado color gris decapado e hidrofugado
2. Zapata de hormigón HA25
3. Mallazos horizontales 15X15 6
4. Mortero Emáx=6mm
5. Parte superior de zapata a 1 cm del borde de la pata
6. Mallazo vertical con extremos doblados

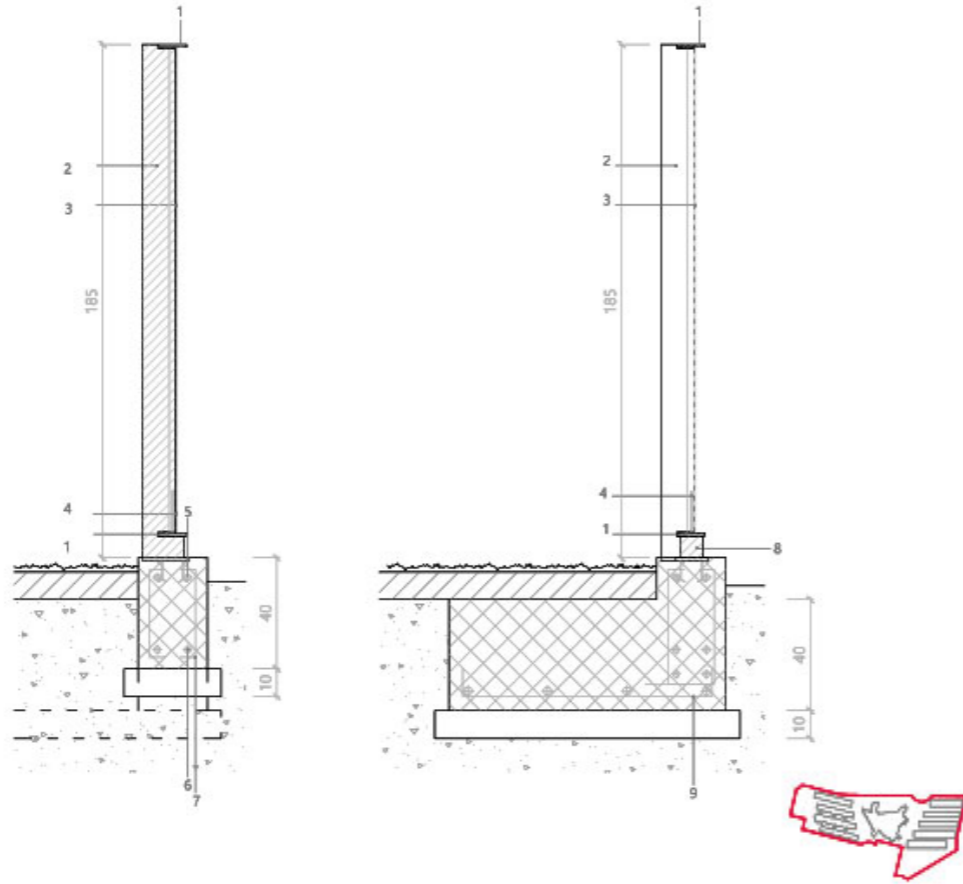


Mayo bench detail

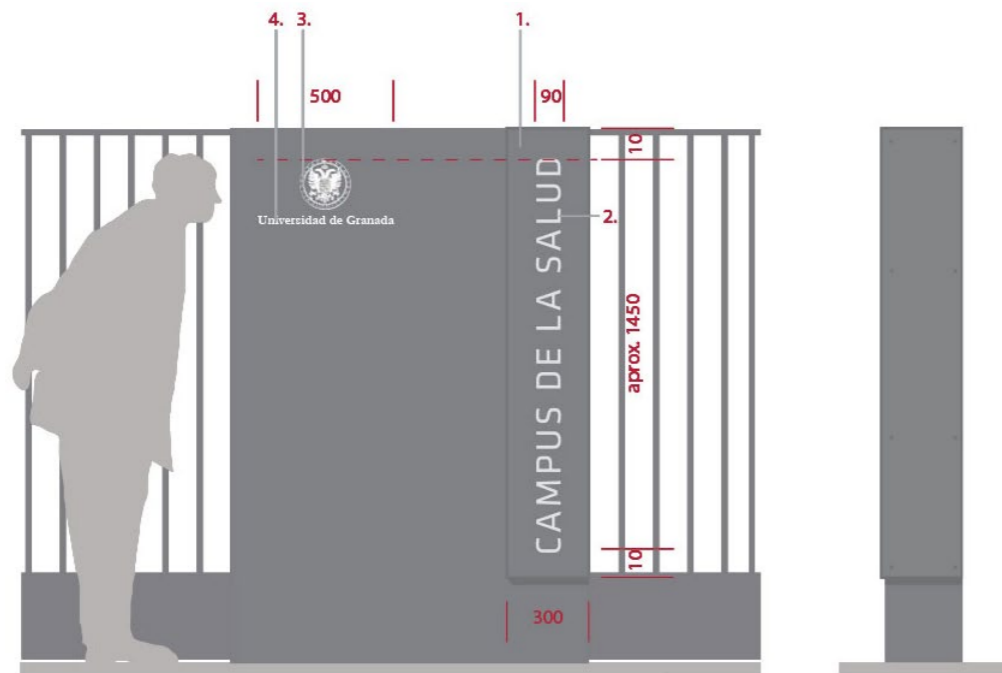


Abril bench detail

1. Pletina 100x100mm
2. Chapon \varnothing 100mm(cada 21 barrotes)
3. Tubo diametro 1"
4. Pletina 150x5 mm
5. Placa de anclaje
6. \varnothing 12
7. \varnothing 8 c/20
8. Pletina 80x10mm(cada 4 barrotes)
9. \varnothing 12 c/15

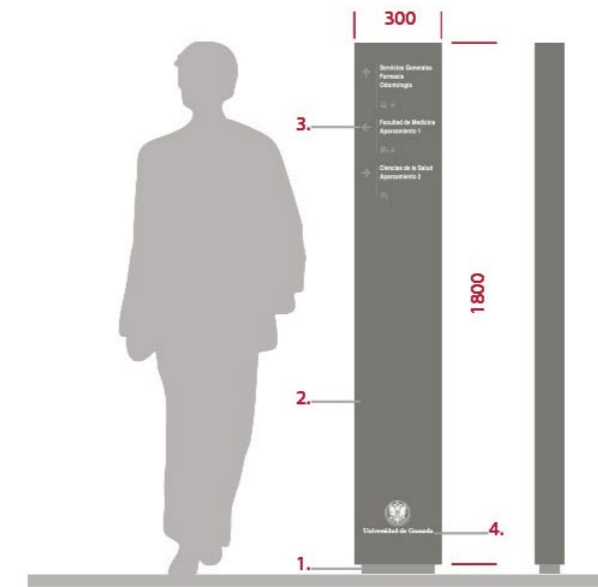


Fence. Constructive section



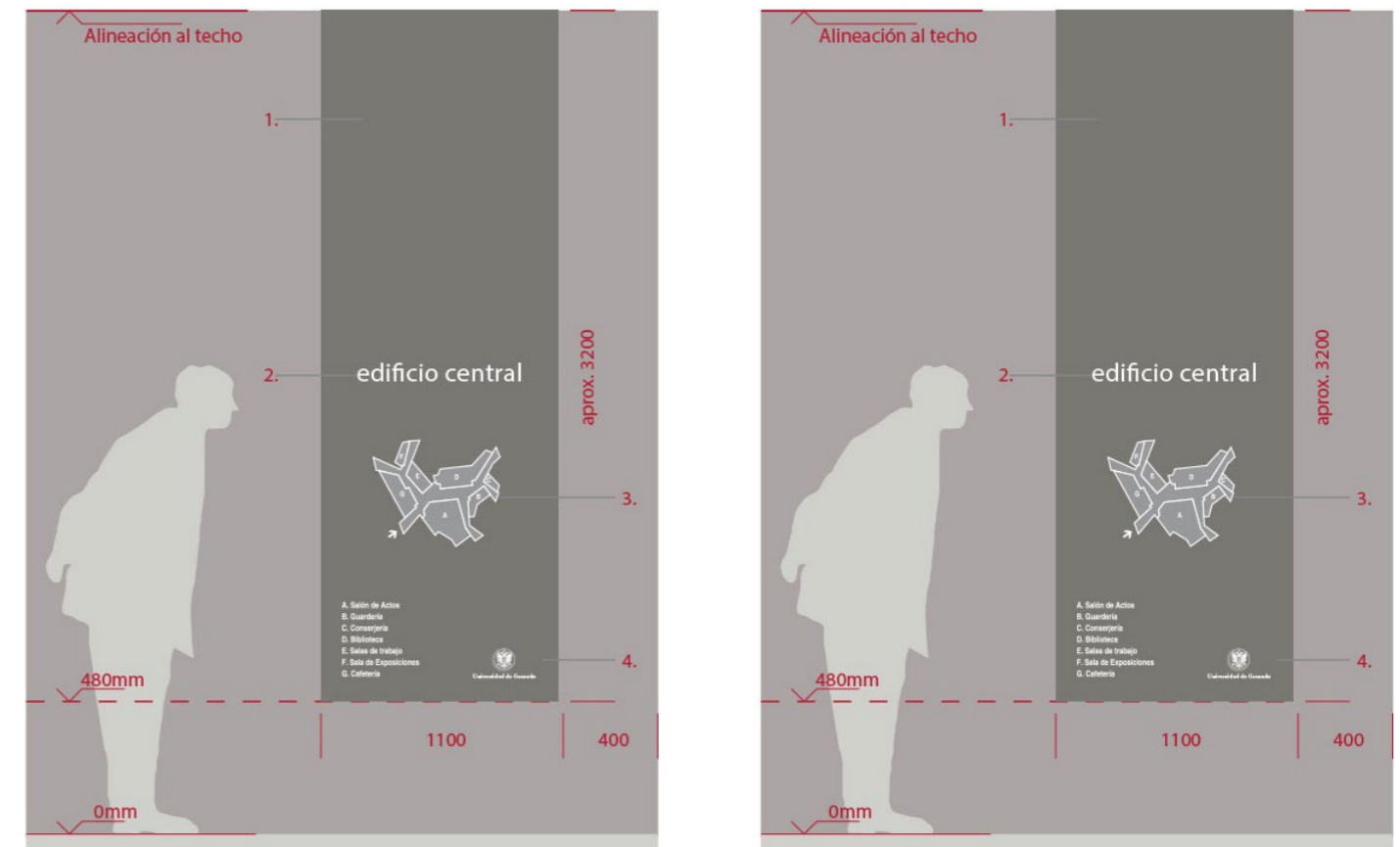
1. Panel directorio. Lacado en color del paramento de chapa
2. Texto fresados. Tipografía: Klavika Regular. Panel trasero lacado RAL 9010
3. Logotipo UGR. Serigrafía color homólogo al RAL 9010
4. Aplicación gráfica vinilo de corte. Texto, color blanco

Fence access



1. Zócalo. Lacado RAL 7038
2. Soporte. Lacado RAL 7037
3. Aplicación gráfica en vinilo de corte. Símbolos y Flechas, color correspondiente a RAL 7038. Textos, color blanco. Tipografía: Helvética Narrow Semibold
4. Logotipo UGR. Serigrafía color homólogo al RAL 9010

Directional totems

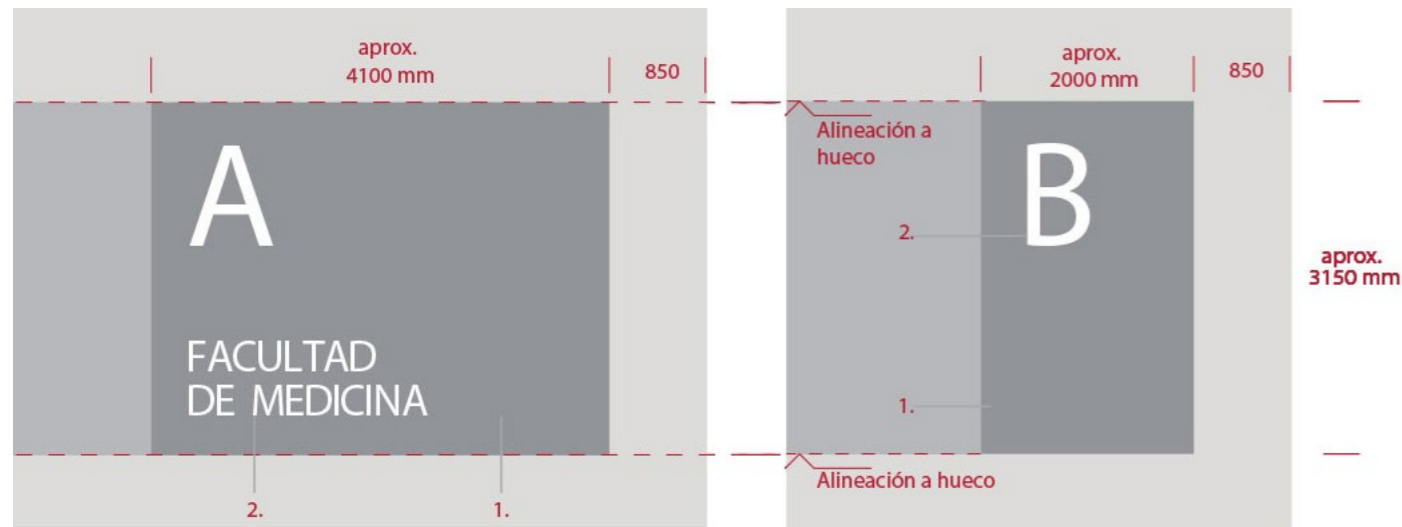


1. Soporte. Lacado en RAL 7037
2. Plano realizado en vinilo de corte. Color blanco y color correspondiente a RAL 7038
3. Aplicación gráfica en vinilo de corte. Textos, color blanco. Tipografía: Helvética Narrow Semibold (texto) / Avant Garde BK BT (titular)
4. Logotipo UGR. Serigrafía color homólogo al RAL 9010

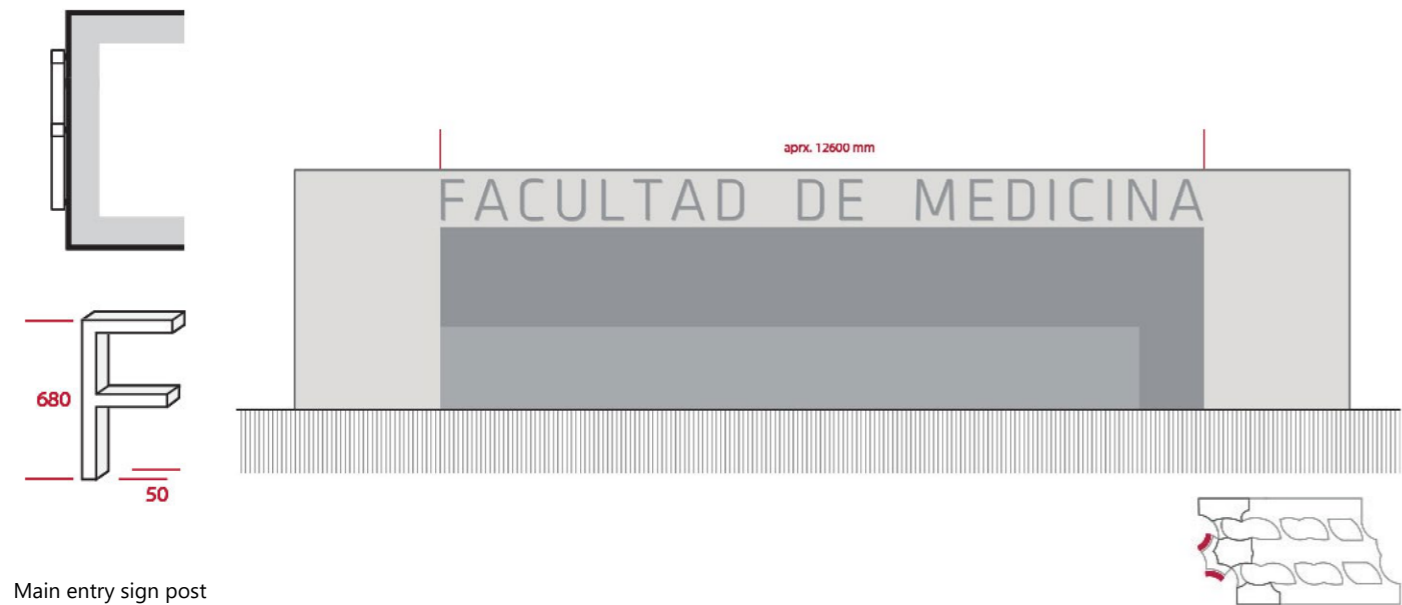
Access directory



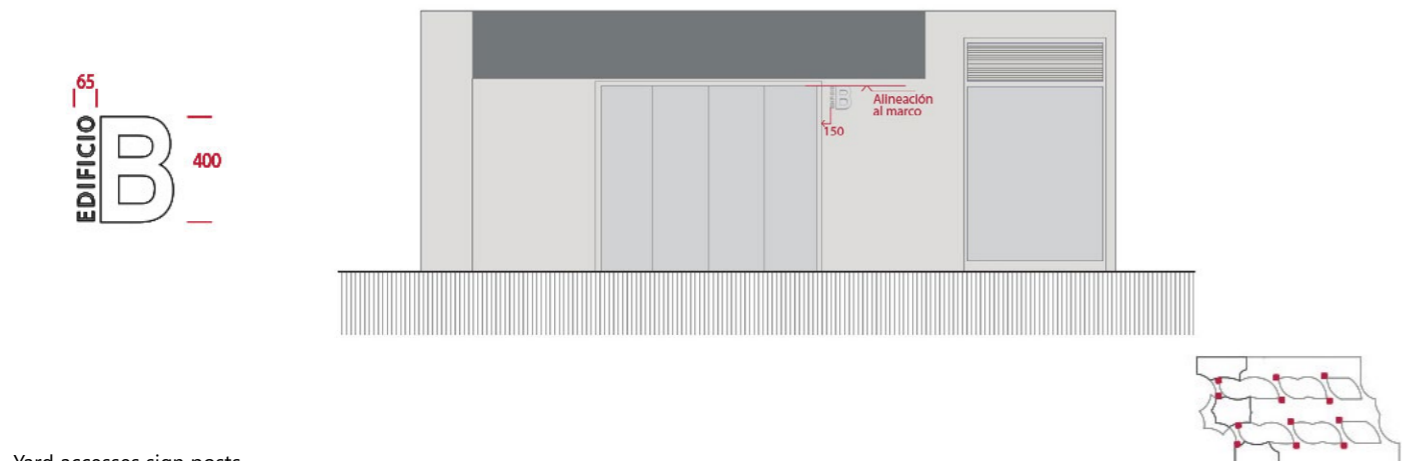
**Masterplan for the Campus of Health and Sciences of UGR University.
Granada, Spain**



Secondary entries sign posts



Main entry sign post



Yard accesses sign posts

MAIN DATA

Client:	University of Granada
Address:	Avda. de la Ilustración S/N, Granada, Spain
Type:	Education and Culture, Offices, Urban design
Status:	Built

DATAS

Competition:	2006
Design of project:	2007
Construction:	2009-2014
Implementation:	2015

SURFACES

Site:	100.360 m ²
Main building:	32.251 m ²
Other buildings:	68.109 m ²
TOTAL:	100.360 m ²

PROJECT TEAM

Main Architect:	Cruz y Ortiz Arquitectos
Collaborators:	Blanca Sánchez, Óscar Minguez
Local Architect:	-
Interior design:	-
Lighting design:	Grupo JG
Landscape architect:	Local 4. Arquitectura del Paisaje
Restoration architect:	-
Digital imaging:	Cruz y Ortiz Arquitectos
Model:	Queipo Maquetas
Photography:	Duccio Malagamba, Javier Calleja, Manuel Renau, Cruz y Ortiz Arquitectos, Fotowork (maqueta)
Structural engineering:	Tedeco Ingenieros
Climate engineer:	Grupo JG
Building physics advisor:	-
Fire safety specialist:	Cruz y Ortiz Arquitectos
Health and Safety:	Cemosa, Ingeniería y Control
Urban planning:	Cruz y Ortiz Arquitectos
Survey:	Cruz y Ortiz Arquitectos
Site control:	Análisis de la Edificación y Construcción
Contractors:	Dragados, UTE: Corsán, ACSA, UCOP