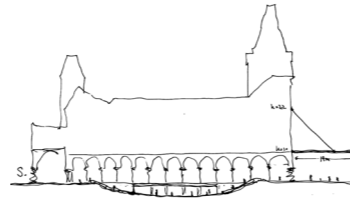


The Rijksmuseum

Amsterdam, Netherlands



REPORT

The Rijksmuseum in Amsterdam was designed in the late nineteenth century by Dutch architect Pieter Cuypers. The function of the building was twofold: one part was the national museum, the other the gateway to the south of Amsterdam.

The museum use has paid an overly high price for its urban role as a connecting element between what was then the existing city –to the North– and the newer developments towards the South. A walkway - virtually a street - runs through the building from North to South splitting it in two parts, necessitating two entrances –both towards the North– and two main staircases; this means that only on the first floor are the Eastern and Western parts of the building joined, while the ground floor and basement are divided.

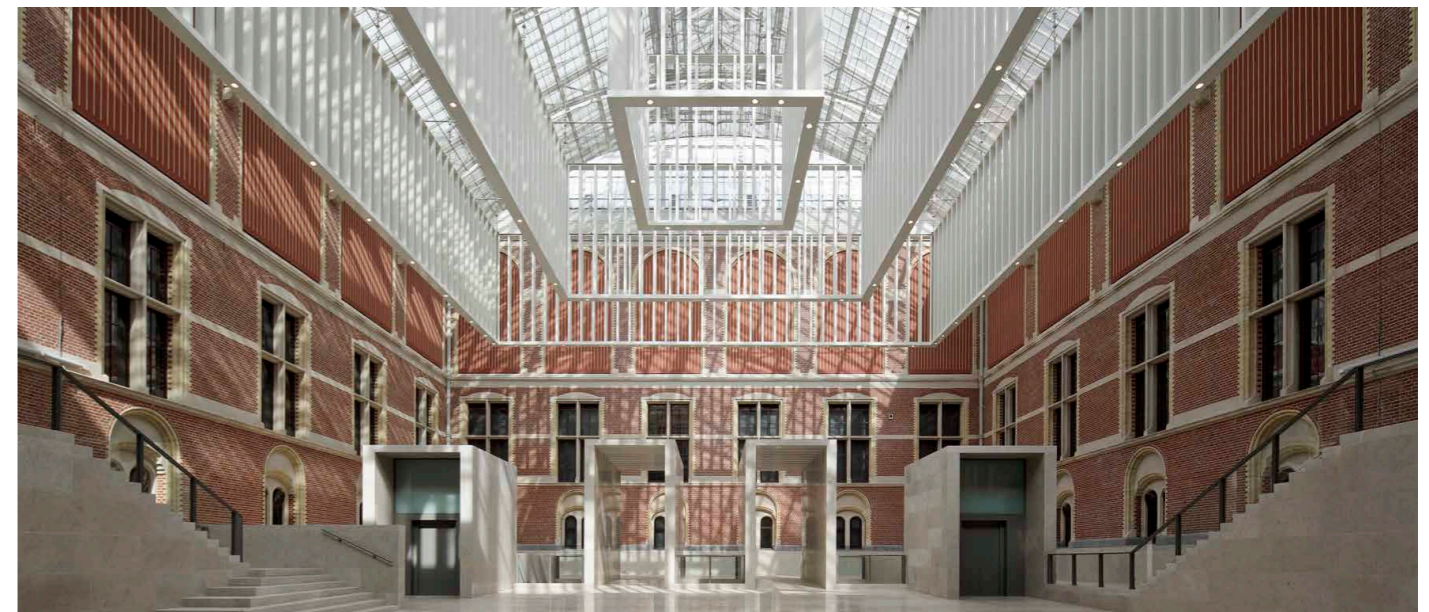
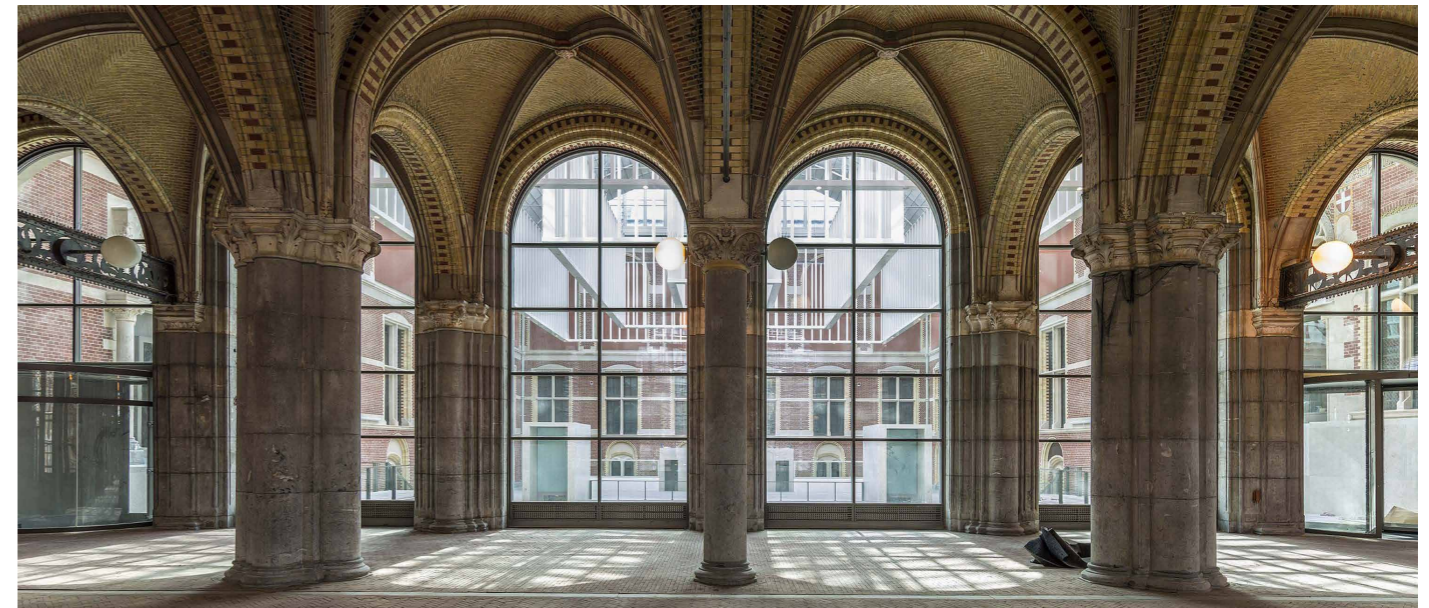
The need for exhibition space has meant building within the courtyards which led to a lack of natural light. This also brought to a kind of labyrinth in which the visitor is given no information concerning their whereabouts.

The intervention on the building was, initially, meant to open up a new and unique entrance to the museum admission in the central passage hall, and secondly, to recover the courtyards and exhibition spaces, regaining somewhat their original state, or at least their dimensions.

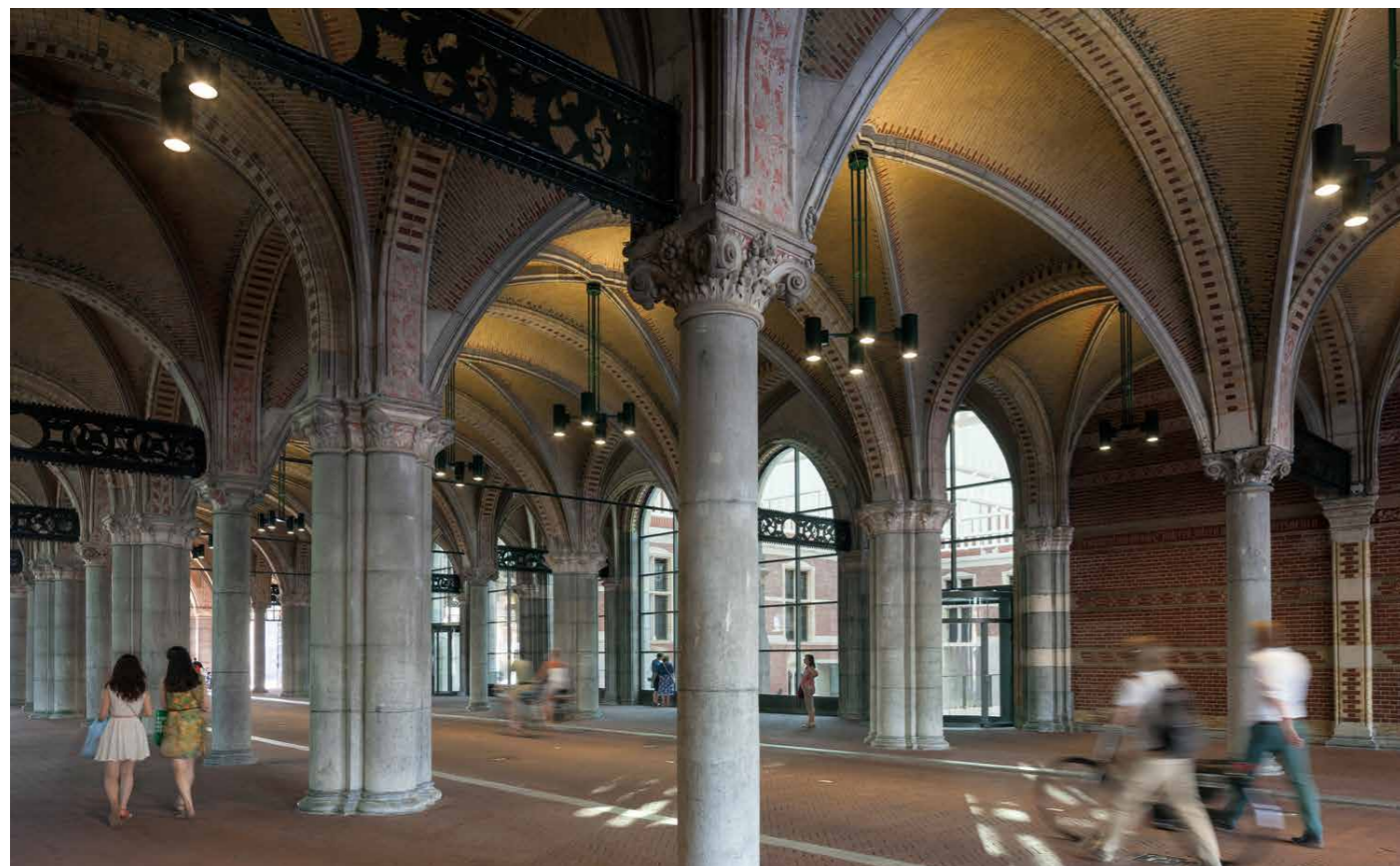
The large space generated by opening and connecting courtyards houses all essential uses for visitors, and offers a suitable space on the scale that the grandeur of the building deserves. You enter this hall from the passageway, and the tours to the exhibition areas start at this point, linking with the original grand stairs.

In the new space created, natural limestone has been used. The courtyards are connected under the passage. On each of them a structure with an acoustic and lighting mission has been suspended: 'the chandeliers'.

Publication's title: **The Rijksmuseum, Amsterdam**
 Typology: **Museums and Galleries, Rehabilitation Commercial**
 Client: **Programmadirectie Het Nieuwe Rijksmuseum**
 Surface: **45.000 m²**
 Year: **2001-2013**
 Status: **Built**

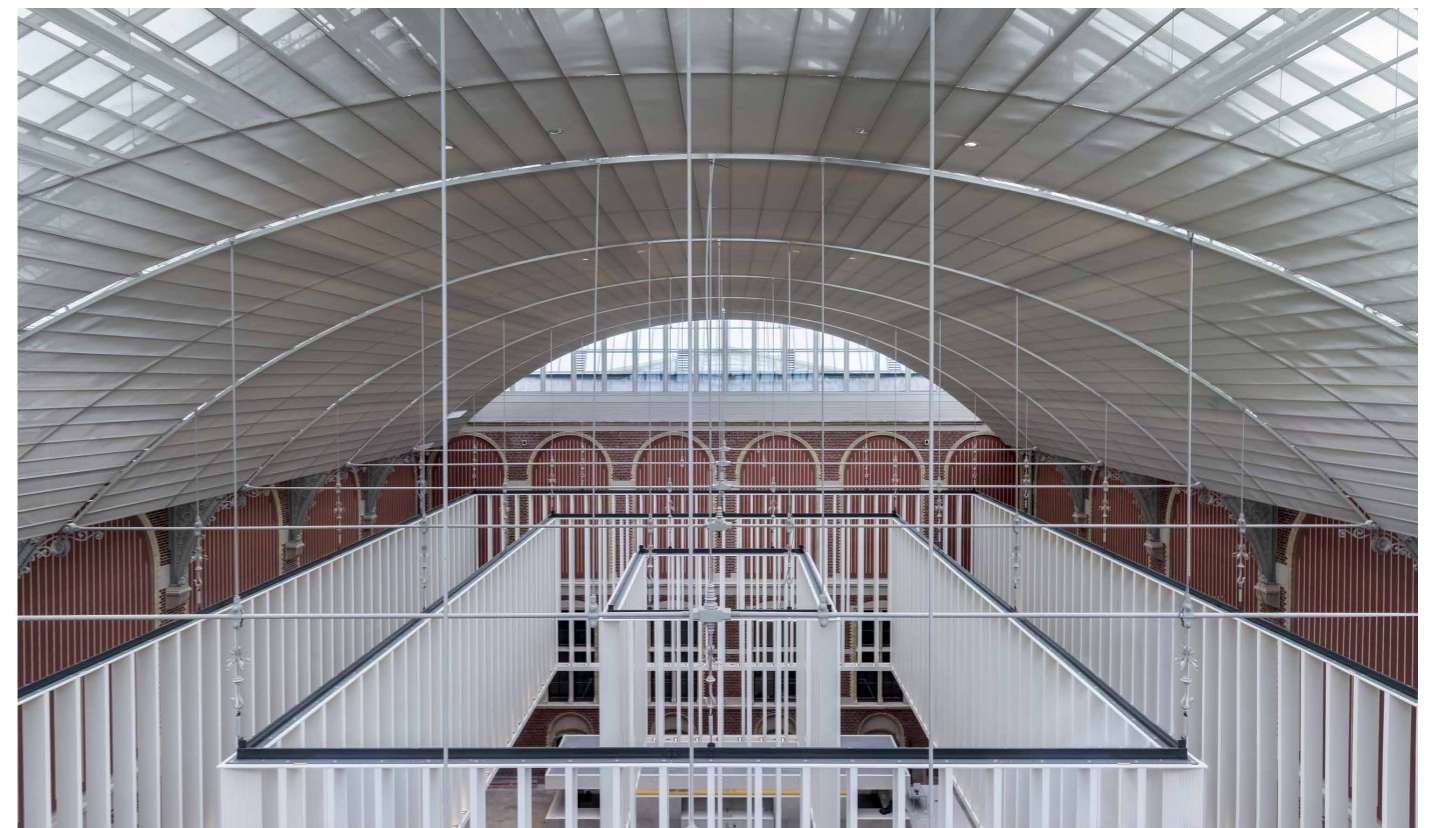




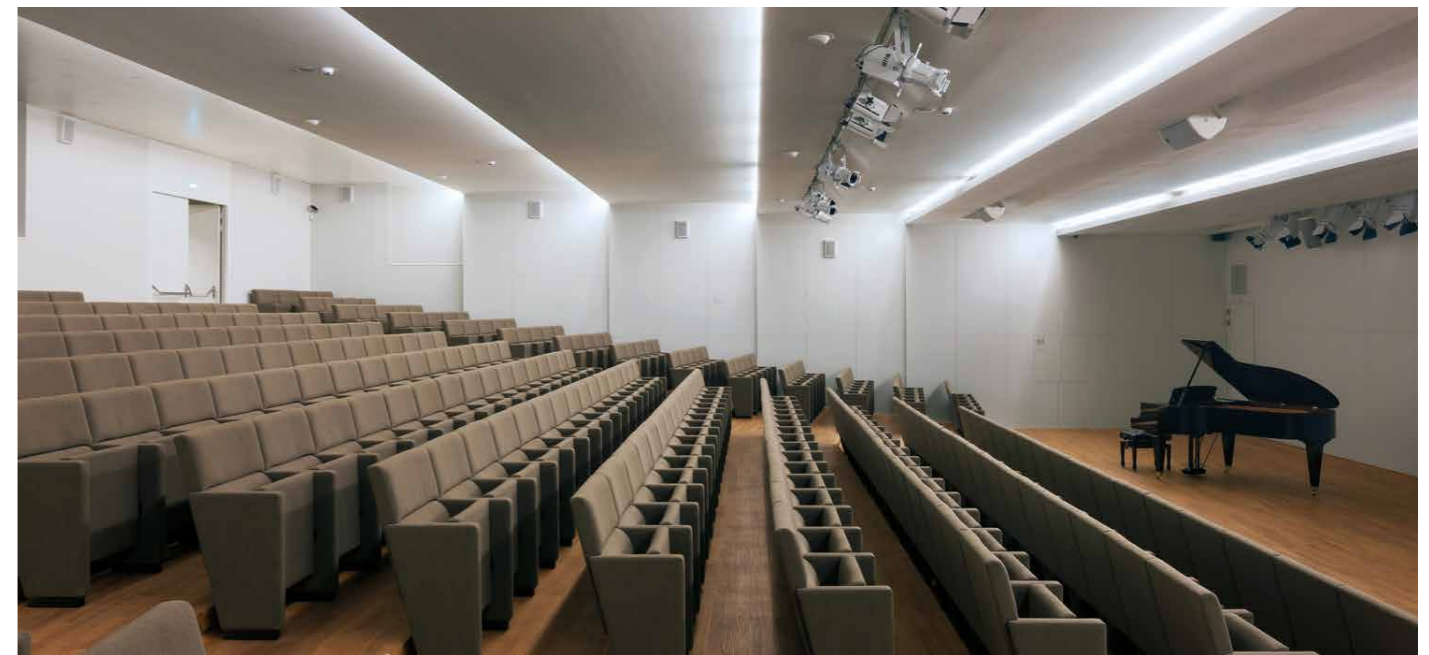
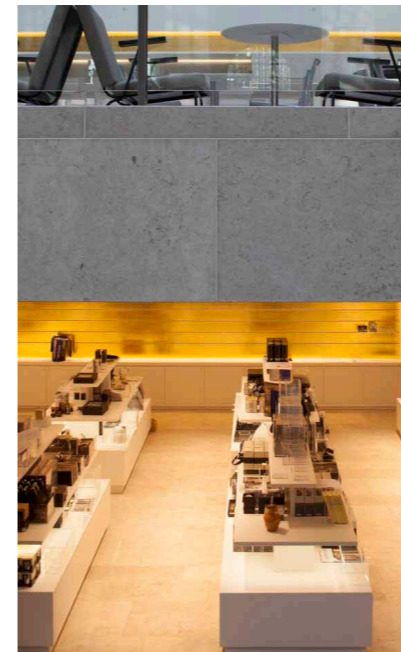
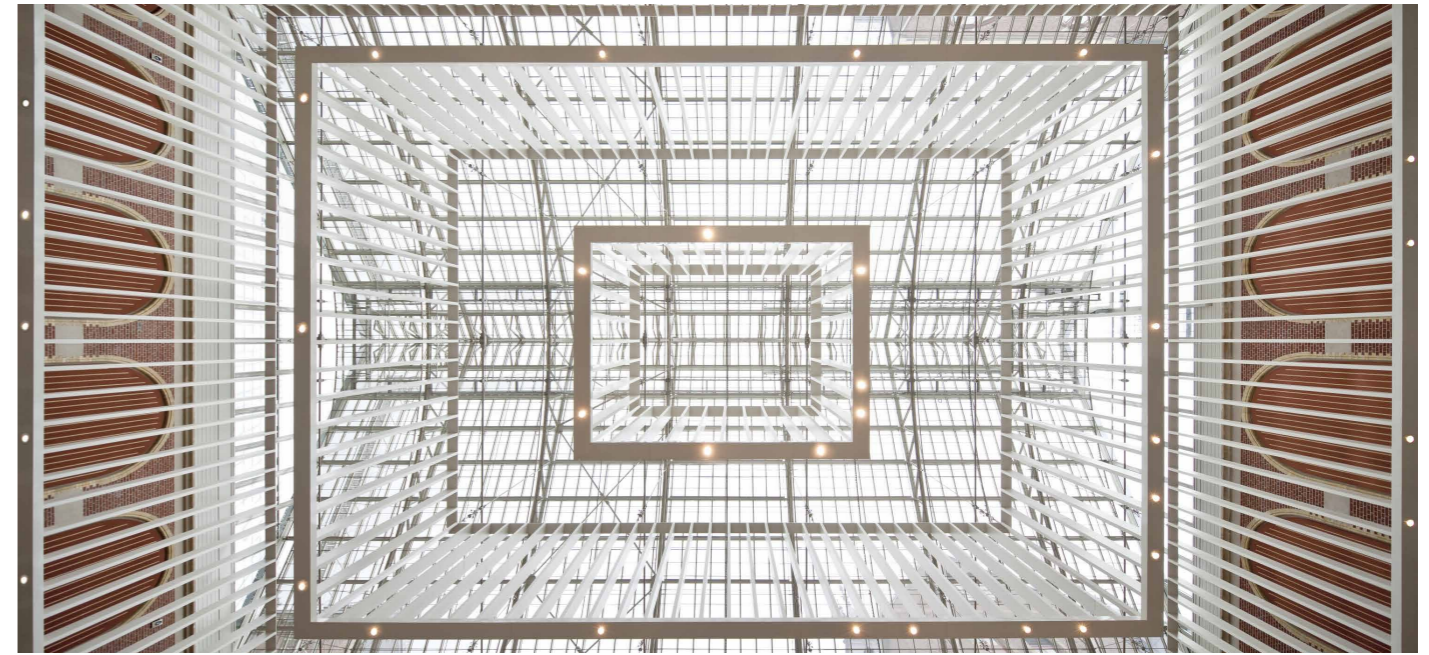




Detailed Exterior Views

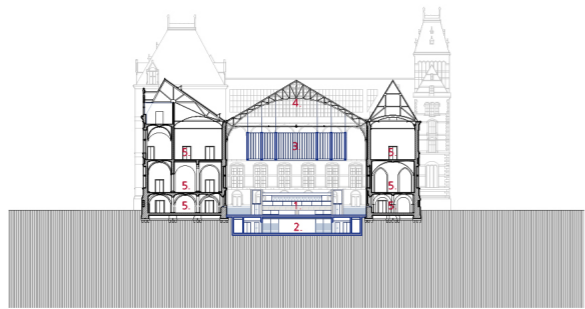
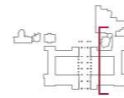


Detailed Interior Views

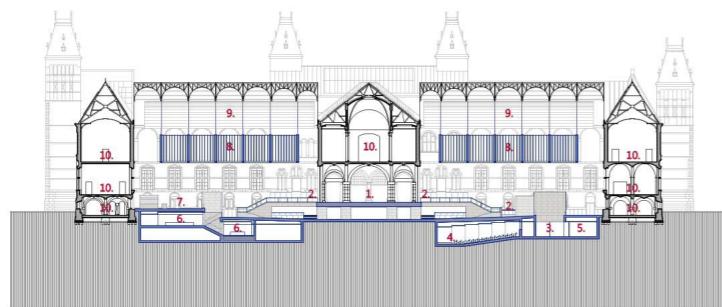
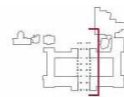




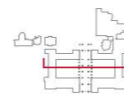
- 1. Access to exhibition space
- 2. Auditorium
- 3. Chandelier
- 4. Velum
- 5. Exhibition space



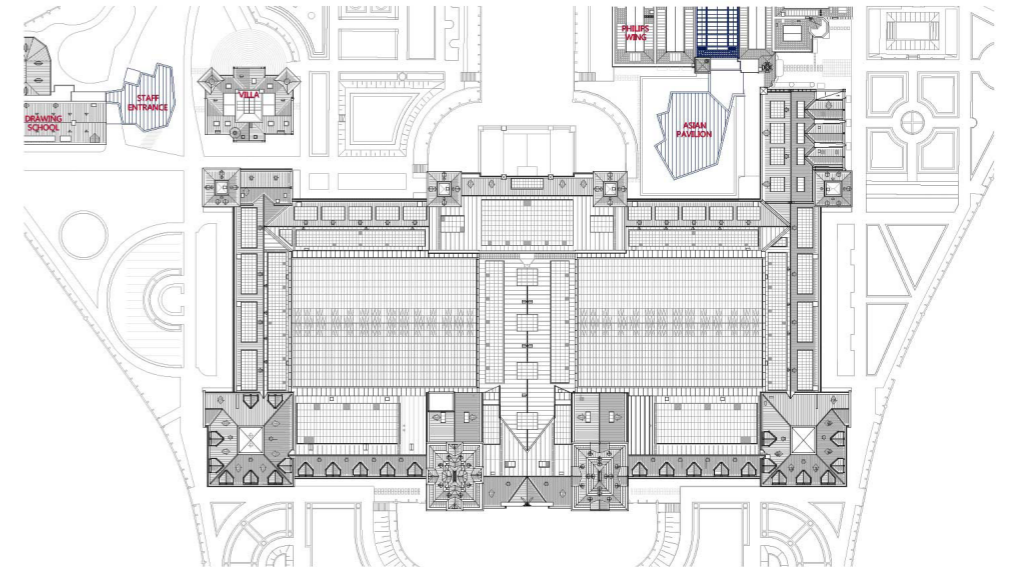
- 1. Café
- 2. Museum shop
- 3. Chandelier
- 4. Velum
- 5. Exhibition space



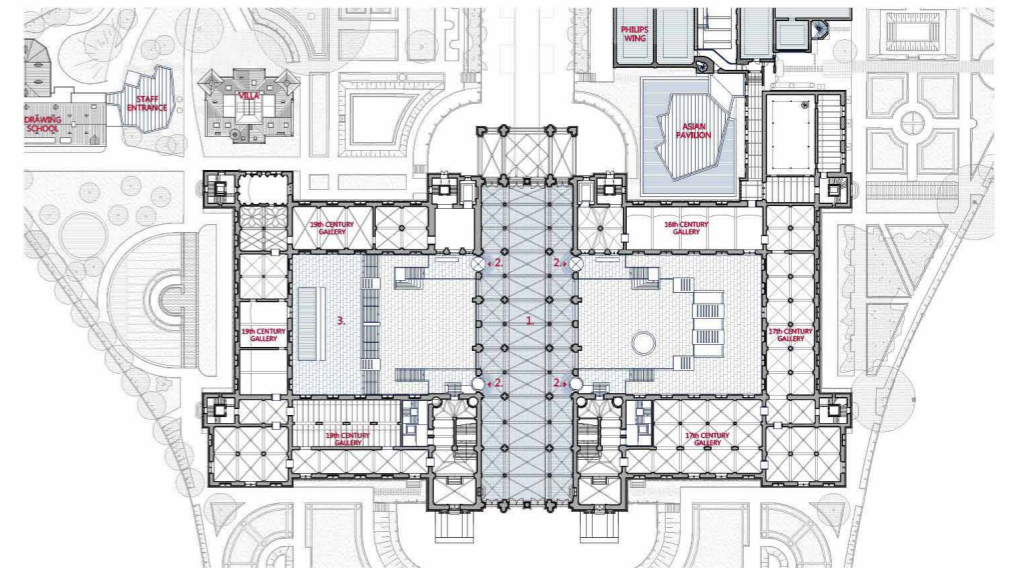
- 1. Museum passageway
- 2. Control point
- 3. Auditorium lobby
- 4. Auditorium
- 5. Meeting room
- 6. Shop
- 7. Café
- 8. Chandelier
- 9. Velum
- 10. Exhibition space



Sections

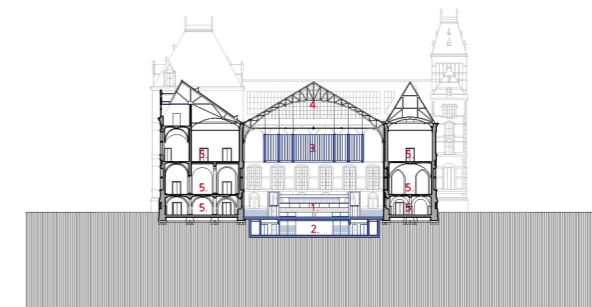


Roof plan



- 1. Museum passageway
- 2. Entrance to Rijksmuseum
- 3. Café

First floor

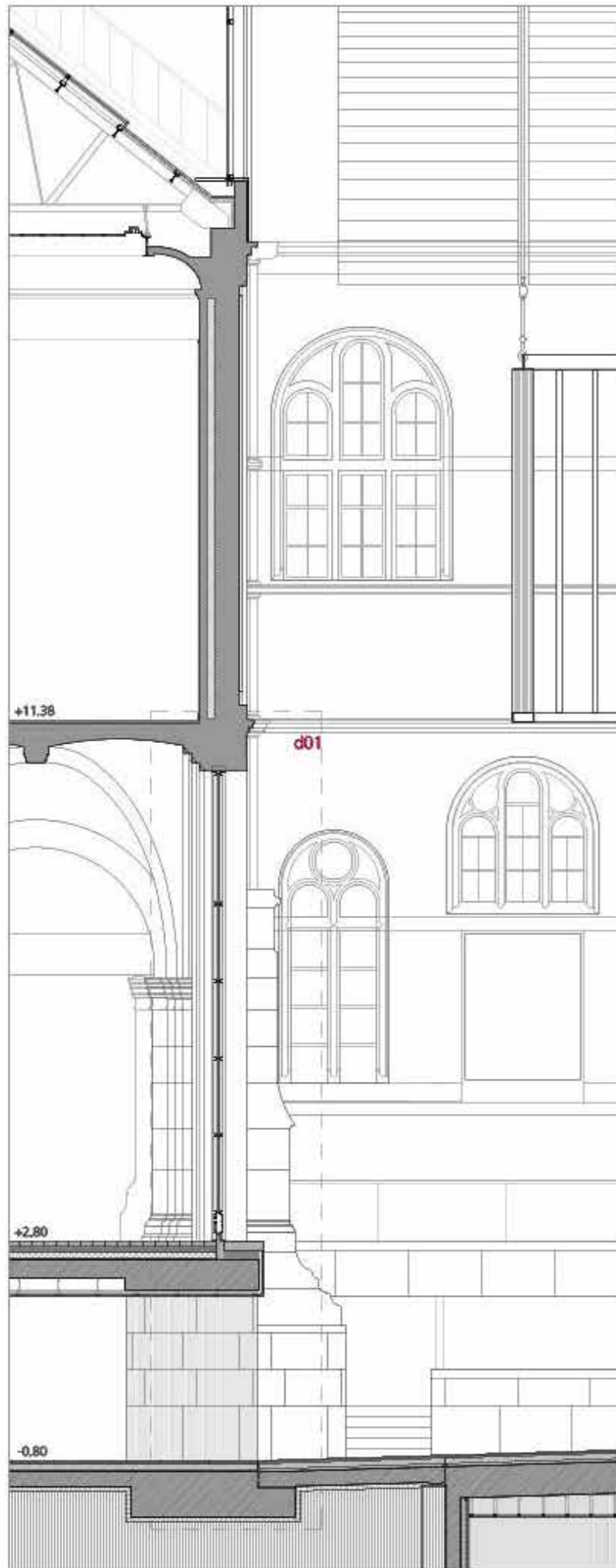


- 1. Information desk
- 2. Ticket desk
- 3. Cloakroom
- 4. Entrance to galleries
- 5. Museum shop
- 6. Toilets
- 7. Café

Ground floor



Floor plans



Structural Section

The Rijksmuseum, Amsterdam, Netherlands

MAIN DATA

Client: Programmadirectie Het Nieuwe Rijksmuseum
Address: Museumstraat, 1. 1071 Amsterdam, Netherlands
Type: Museums and Galleries, Rehabilitation, Commercial
Status: Built

DATAS

Competition: 2001
Design of project: 2001-2013
Construction: 2007-2013
Implementation: 2013

SURFACES

Site: 16.000 m²
Main building: 45.000 m²
TOTAL: 45.000 m²

PROJECT TEAM

Main Architect: Cruz y Ortiz Arquitectos
Collaborators: M. Huisman, T. Offermans, T. Reventós, O. García de la Cámara, M. Ter Steege, A. López, J. L. Mayén, C. Hernández, A. Vila, V. Bernícola, J. Kolle, V. Breña, S. Gutiérrez, M. Pelegrín, I. Menenga, J. Pérez-Goicoechea, L. Gutierrez, C. Arévalo, R. Peinado, J.C. Mulero, M. Velasco

Local Architect: Cruz y Ortiz Arquitectos, HMADP Architectos
Interior design: Cruz y Ortiz Arquitectos
Lighting design: Arup
Landscape architect: Copijn Tuin - en Landschapsarchitecten
Restoration architect: Van Hoogevest Architecten
Digital imaging: Cruz y Ortiz Arquitectos, Indigo
Model: Jacinto Gómez
Photography: Jose Manuel Ballester, Pedro Pegenaute, Luuk Kramer, Iwan Baan, Jannes Linders, Arie de Leeuw, Erik Smits, Eran Oppenheimer, Duccio Malagamba, Ewout Huibers, John Marshall

Structural engineering: ARCADIS
Technical engineering: Arup, RoyalHaskoning DHV, Van Heugten
Fire advisor: DGMR
Construction management: Cruz y Ortiz Arquitectos
Contractors: JP van Eesteren, BAM, Homij, Kuipers, Unica, Woudenberg Koninklijke, Moehringen

Work control: Van Hoogevest, Cruz y Ortiz Arquitectos, Rijksvastgoedbedrijf,

AWARDS

- Architectural Spanish Award 2013 awarded by CSCAE
- European Aadipa Award 2013
- Abe Bonnema Architecture Award 2013
- Interior Architecture of the Year. Icon Awards 2013
- Harrie Tillieprijs 2013
- The Brick Awards, Worldwide Brick Award 2013
- FAD Internacional Award 2014
- De Gouden AAP 2014 (Amsterdamse Architectuur Prijs)