

**Cruz y Ortiz Arquitectos monographic  
Exhibition 'Het Rijksmuseum en meer' at OBA  
Library**

Amsterdam, Netherlands

**REPORT**

In some previous exhibitions *Cruz y Ortiz Buildings* at Harvard GSD and *Architektur der Synthese* at Aedes Gallery in Berlin, we always intended to show and prove the same thing, the synthetic character of architecture, its capacity of creating a shape that concentrates and sums up – that synthesizes, again the unavoidable word- the frequently contradictory components of the architectural work: from site to use, from material to construction or environment and many others not to be mentioned now.

In this exhibition, many original documents are presented, mostly models, hard to be appreciated unless one visits it. All of them are seminal documents, that is, they reflect the moment in which, sometimes after a long time, the shape appears as a synthesis of all previously analyzed subjects.

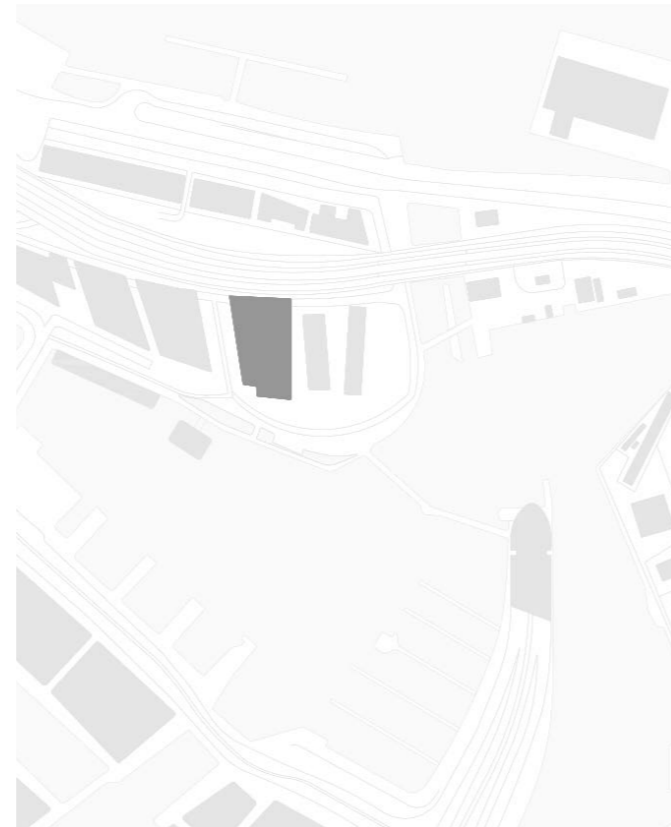
Almost repeating and extending the same pattern of previous exhibitions, these elements are displayed over a series of tables. The three first ones are devoted to the Rijksmuseum and the others, up to nine, to other recent and older works. Each project is illustrated with little models and sketches, that is, the essential elements for us at the initial moments of a project.

The tables devoted to the Rijksmuseum explain the initial ideas behind the project: turning the building axis of symmetry – from the Cuyper's North-South to an East-West one reinforcing the transversal connection under the passage – the recovery and connection of both courtyards in order to create a new public space able to hold the growing number of visitors, the design of the chandeliers and, in general, the intention of creating a new architecture that completes the original one without abusing the contrast. Thus, we trust the building can now reach naturally a new stage of its life, not as different as living beings do.

We would like to thank the institutions like the Public Library of Amsterdam, ARCAM and the Rijksmuseum itself for giving us the opportunity of showing our work and their support. Companies like Rijnja and Gielissen have also made it possible. This is a particular moment in our career, deeply marked by the renovation of the Rijksmuseum as well as other recent Dutch projects that have brought, not only to our work but also to our lives, an important and joyful Dutch element in the last few years. We would also like to thank for this.

**Publication's title:** Cruz y Ortiz Arquitectos monographic  
Exhibition 'Het Rijksmuseum  
en meer' at OBA, Amsterdam  
**Exhibitions**

**Typology:** Exhibitions  
**Client:** OBA, Amsterdam Central Library  
**Surface:** 326 m<sup>2</sup>  
**Year:** 2013  
**Status:** Built

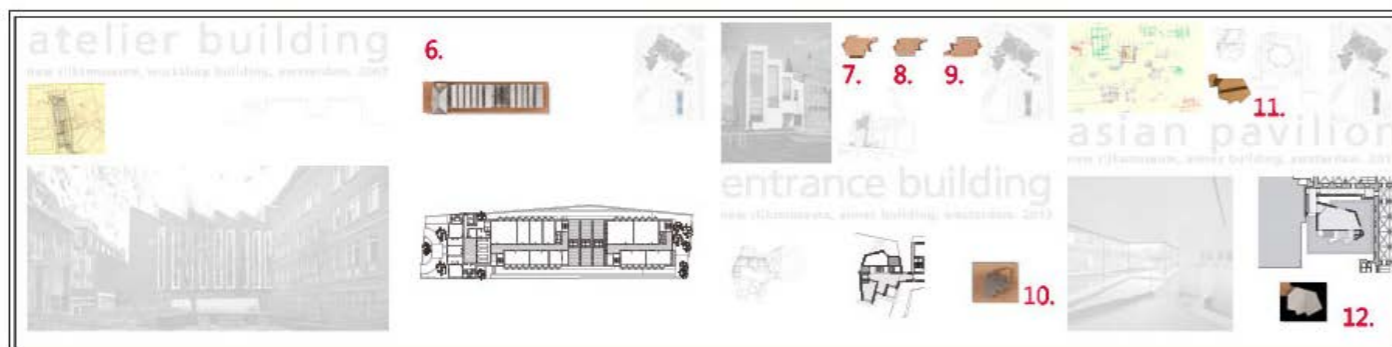
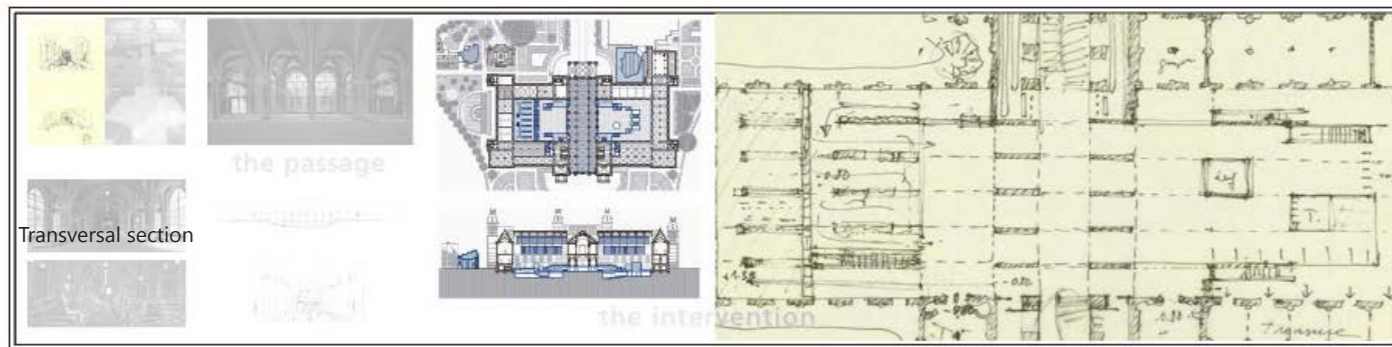
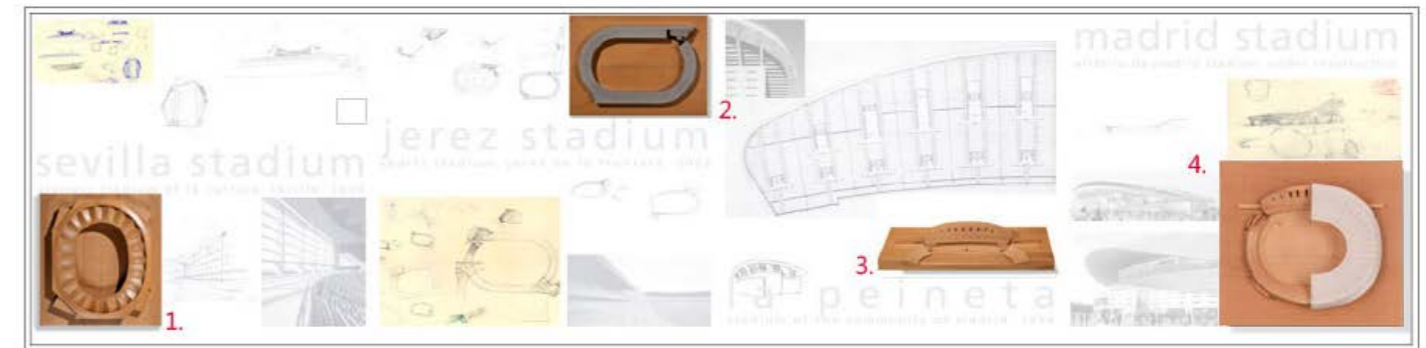
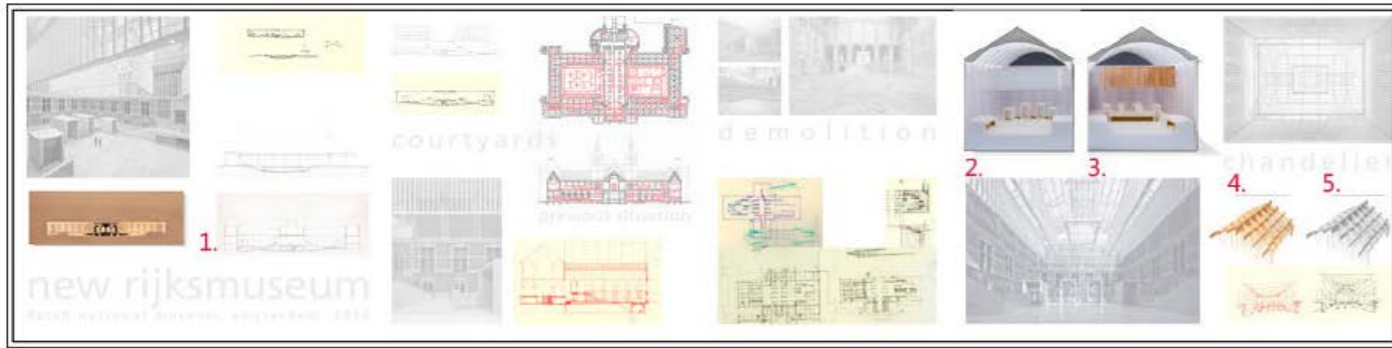






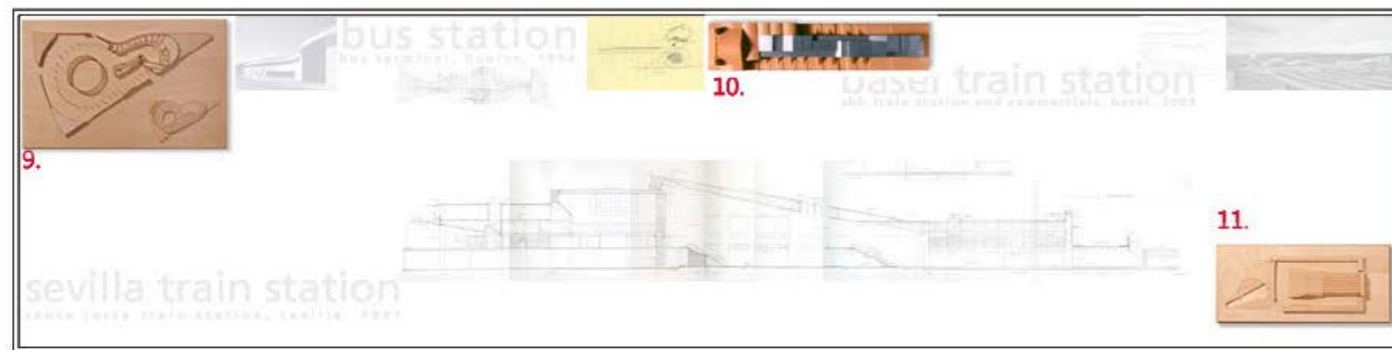
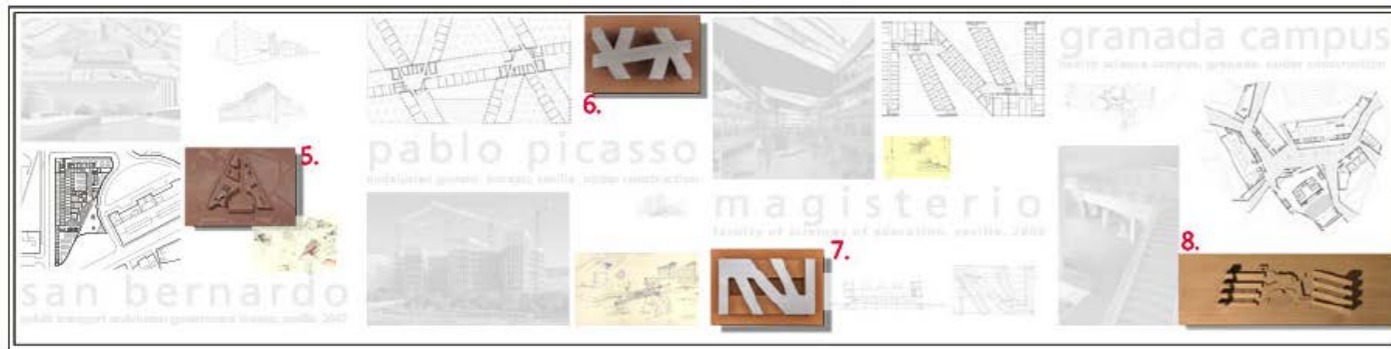
General Interior Views

Detail Views

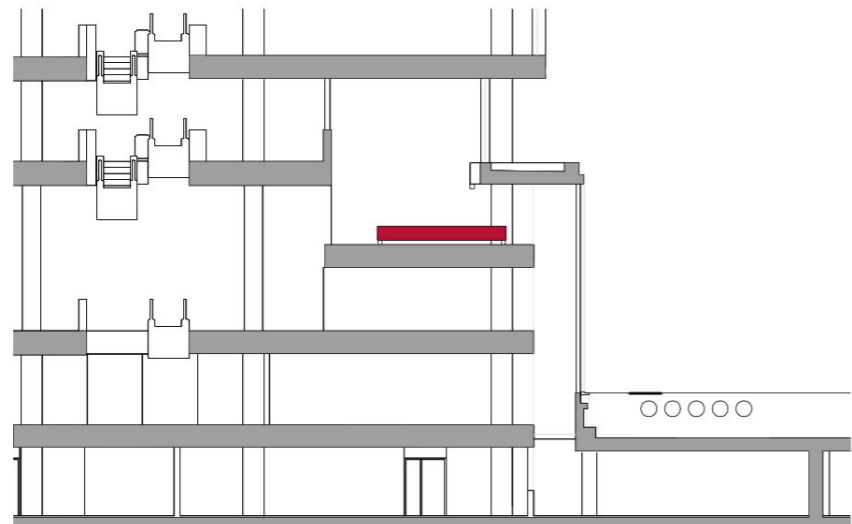


- 1. Rijksmuseum model 1/300
- 2. Rijksmuseum working model 1
- 3. Rijksmuseum working model 2
- 4. Chandelier model 1
- 5. Chandelier model 2
- 6. Atelier model 1/300
- 7. Working model Asian pavilion 1/200
- 8. Working model Asian pavilion 1/200
- 9. Working model Asian pavilion 1/200
- 10. Staff entrance model 1/200
- 11. Asian pavilion model 1/200
- 12. Asian pavilion model 1/200

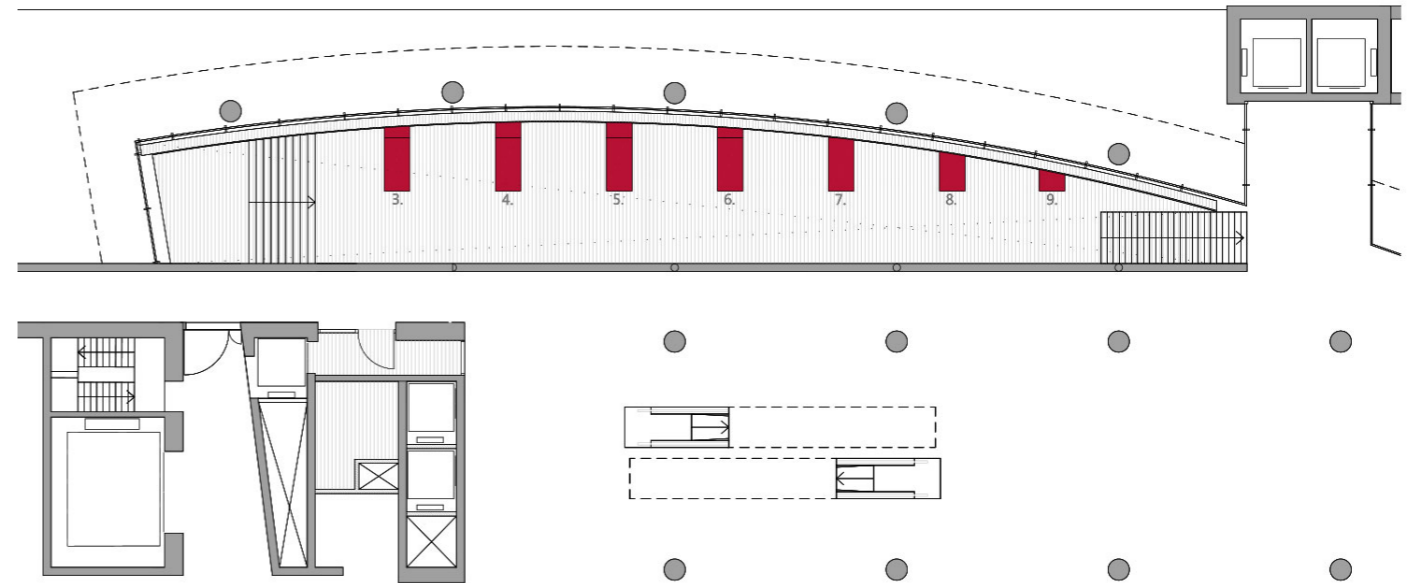
- 1. Sevilla stadium model
- 2. Jerez stadium model
- 3. Madrid stadium model
- 4. Madrid extension stadium model
- 5. Hannover model 1/400
- 6. Hannover model 1/125
- 7. Doñana model 1/400
- 8. Doñana model 1/150
- 9. Toledo model
- 10. Lugano model 1/1000
- 11. Carabanchel model 2
- 12. Carabanchel model 1
- 13. Sancti Petri model
- 14. Sancti Petri model 2
- 15. Tharsis model
- 16. Tharsis model 2



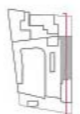
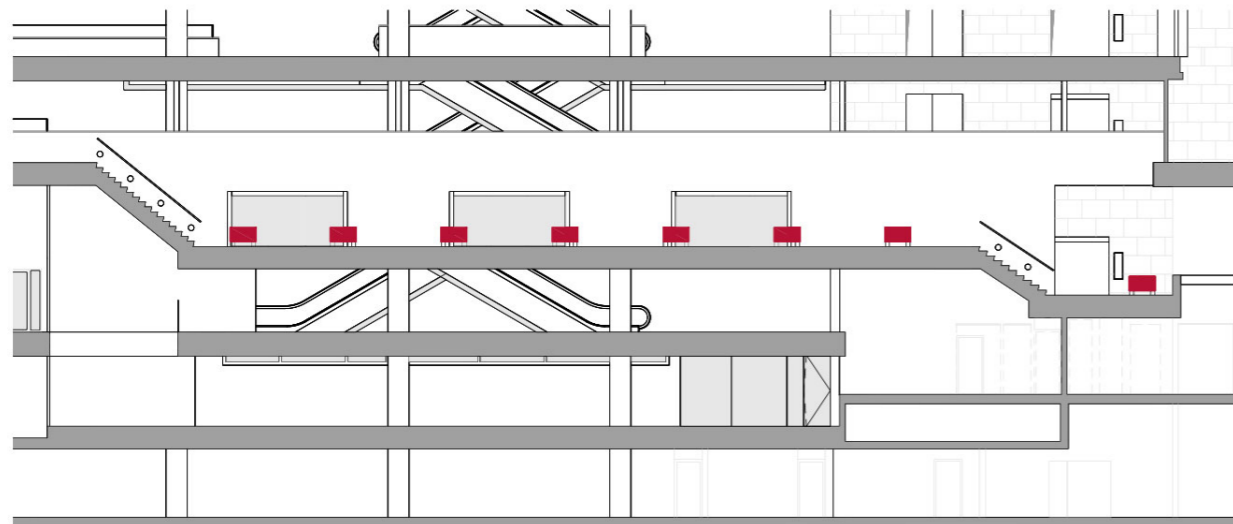
- 1. Sevilla library model
- 2. Sevilla library model
- 3. Rotterdam Towers model
- 4. Maria Coronel model
- 5. San Bernardo model 1/1500
- 6. Picasso model 1/400
- 7. Magisterio model 1/400
- 8. Granada model 1/1000
- 9. Huelva model 1/200
- 10. Basilea model 1/500
- 11. Santa Justa model 1/2000



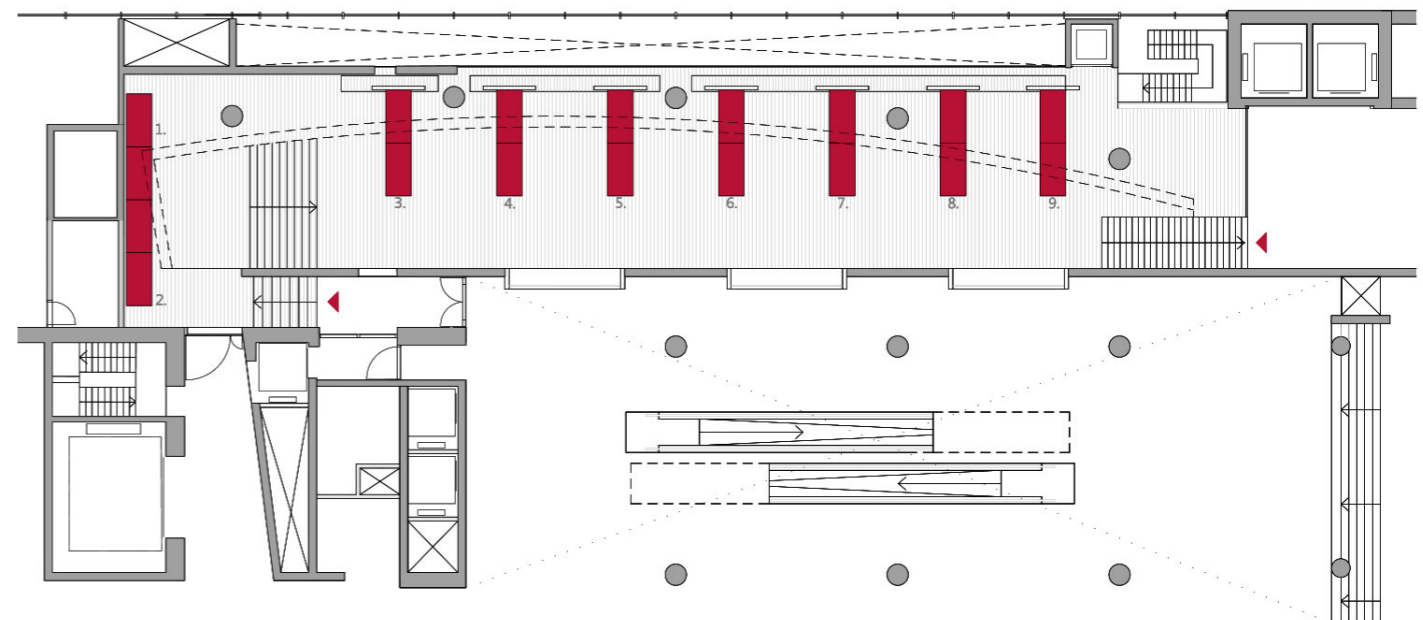
Transversal section



Second floor

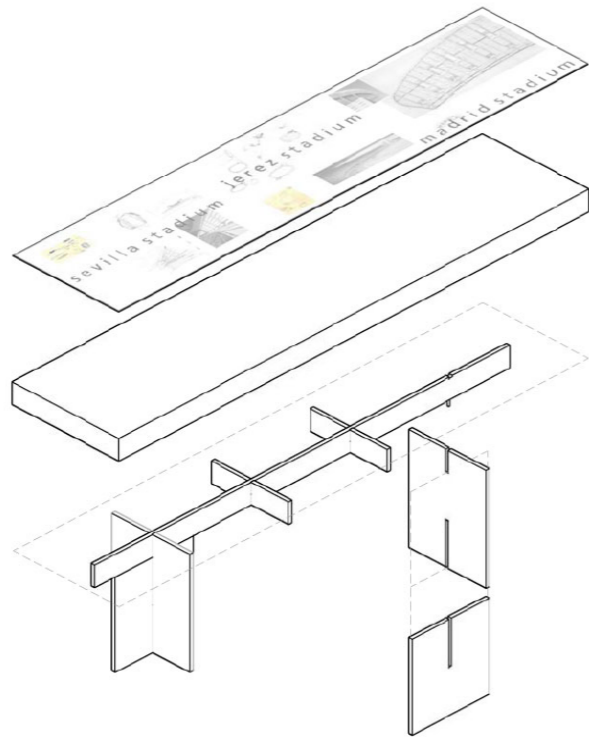


Longitudinal section



First floor

- 1. Rijksmuseum
- 2. Rijksmuseum
- 3. Annex Rijksmuseum
- 4. Stadium
- 5. Museum
- 6. Residential
- 7. Residential and libraries
- 8. Offices and education
- 9. Transport



**Cruz y Ortiz Arquitectos monographic Exhibition 'Het Rijksmuseum en meer' at OBA Library. Amsterdam, Netherlands**

**MAIN DATA**

Client: OBA. Amsterdam Central Library  
Address: Oosterdokskade, 143. 1011 DL Amsterdam, Netherlands.  
Type: Exhibitions  
Status: Built

**DATAS**

Competition: -  
Design of project: 2013  
Construction: 2013  
Implementation: 2013

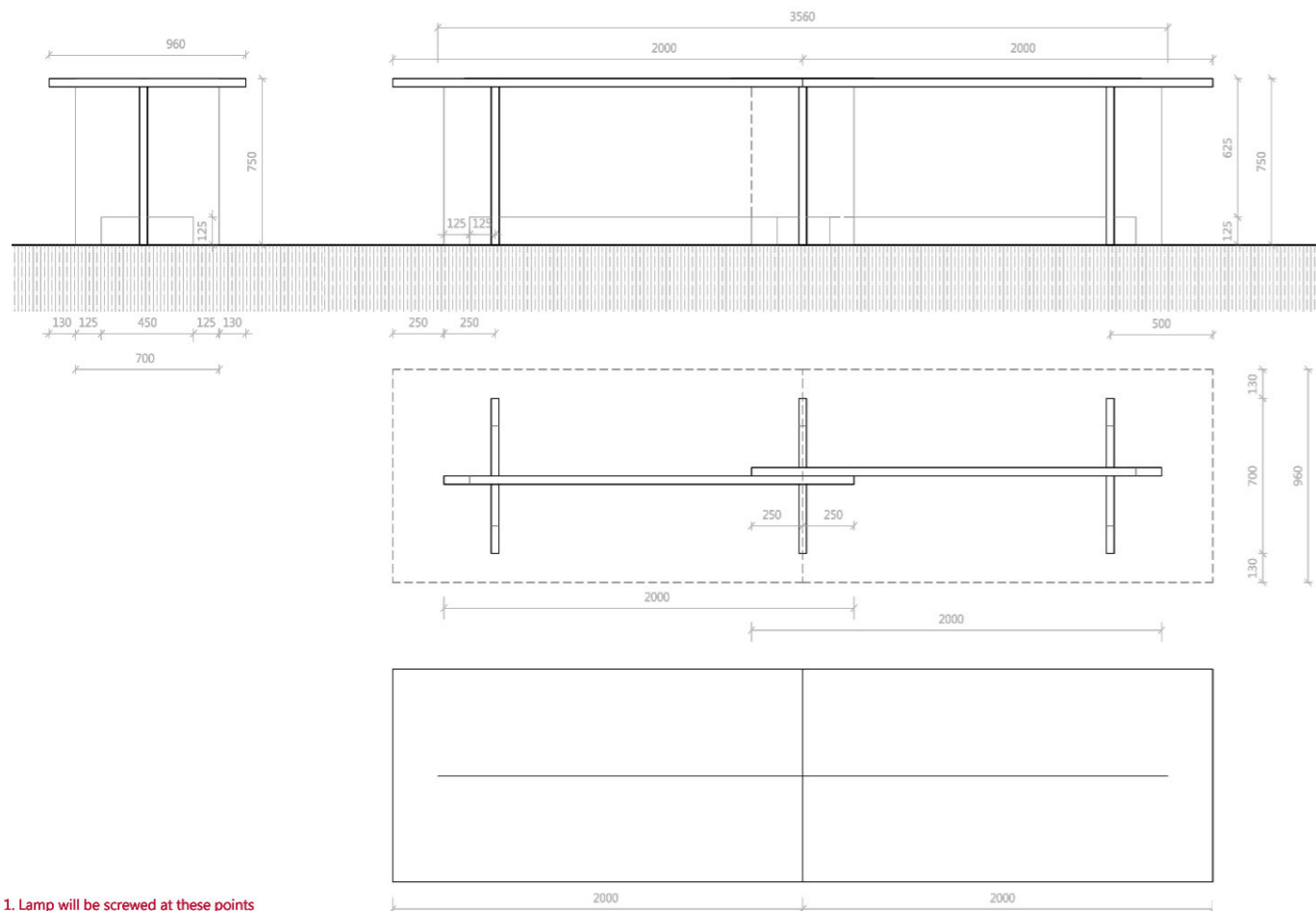
**SURFACES**

Site: 28.500 m<sup>2</sup>  
Main building: 326 m<sup>2</sup>  
Other buildings: -  
TOTAL: 326 m<sup>2</sup>

**PROJECT TEAM**

Main Architect: Cruz y Ortiz Arquitectos  
Collaborators: Teresa Cruz, Juan Carlos Mulero, Muriel Huisman, Thomas Offermans

Local Architect: -  
Interior design: Cruz y Ortiz Arquitectos  
Lighting design: Cruz y Ortiz Arquitectos  
Landscape architect: -  
Restoration architect: -  
Digital imaging: -  
Model: Luis Montiel, Juan de Dios, Queipo maquetas, Jacinto Gómez  
Photography: Cruz y Ortiz Arquitectos, Adriaan van Dam  
Structural engineering: -  
Climate engineer: -  
Building physics advisor: -  
Fire safety specialist: -  
Health and Safety: -  
Urban planning: -  
Survey: Cruz y Ortiz Arquitectos  
Site control: -  
Contractors: Gielissen Interiors, Rijnja, Arcam



1. Lamp will be screwed at these points
2. Support
3. Opening for electric cable

Structural Section