

Offices for Oracle headquarters in the old warehouse 'Nieuwevaart'

Amsterdam, Netherlands



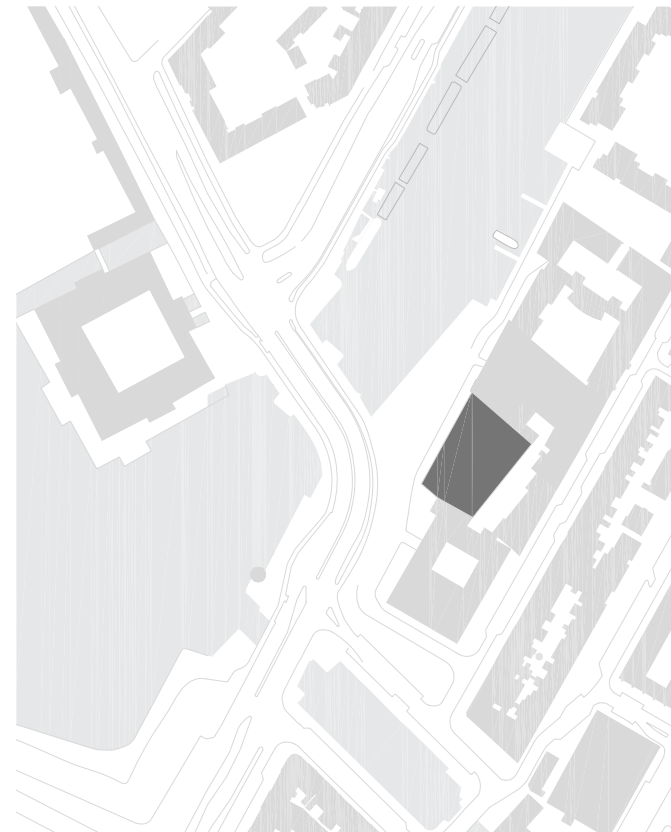
REPORT

The Cloud Sales Centre of Oracle is located on a prominent position at de Nieuwe Vaart 5-9, close to the IJ. Cruz y Ortiz was asked to design a new façade for the property that used to be a warehouse. The building got partially destroyed by a fire that took place in the 60's. Its original façade was characterized by the alternation of surfaces with transport openings and surfaces with small windows. On the roof a huge advertisement's sign was placed over the full width of the lot. After the fire, the building was converted into a school with subsequent new façade. In the 90s the building was given a third façade, once housing a department of the municipality of Amsterdam by which the relationship with its industrial past completely disappeared. The façade as we met, once starting the project, was rather monotonous and proportion-less and above all: closed, beyond which most areas showed evident remnants of its industrial past: cast iron pillars are a clear example.

The source of inspiration for the new façade stems from the original warehouse 'Blaauwhoedenveem Vriesseveem' typified by vertical articulation in closed and open façade parts. On the other hand, the tradition of Amsterdam's building typology of allotments, plinth, center motif and cornice is also leading.

With the new façade we merge two historical typologies into a new contextual architecture. The proposed façade reflects - as literal as possible - the rhythm of the construction, like we know Behrens' did for the AEG warehouses: honest façades that do not hide anything. The pilasters divide the appearance of the building in nine building-high windows, with slender off-white profiles. The middle motif shows a slight deviation marking the central entrance. Both decisions result in an elegant and exalted façade bringing back scale. The plinth and cornice reflect the Amsterdam character. The façade design is a balanced design in 'the city of stone', with an 'optimal interaction between inside-and-outside', where comfort, light and visibility for the employees is guaranteed.

Publication's title: Offices for Oracle headquarters in the old warehouse 'Nieuwevaart', Amsterdam  
 Typology: Offices, Transformation  
 Client: APF International, Oracle  
 Surface: 7.273 m<sup>2</sup>  
 Year: 2017  
 Status: Built





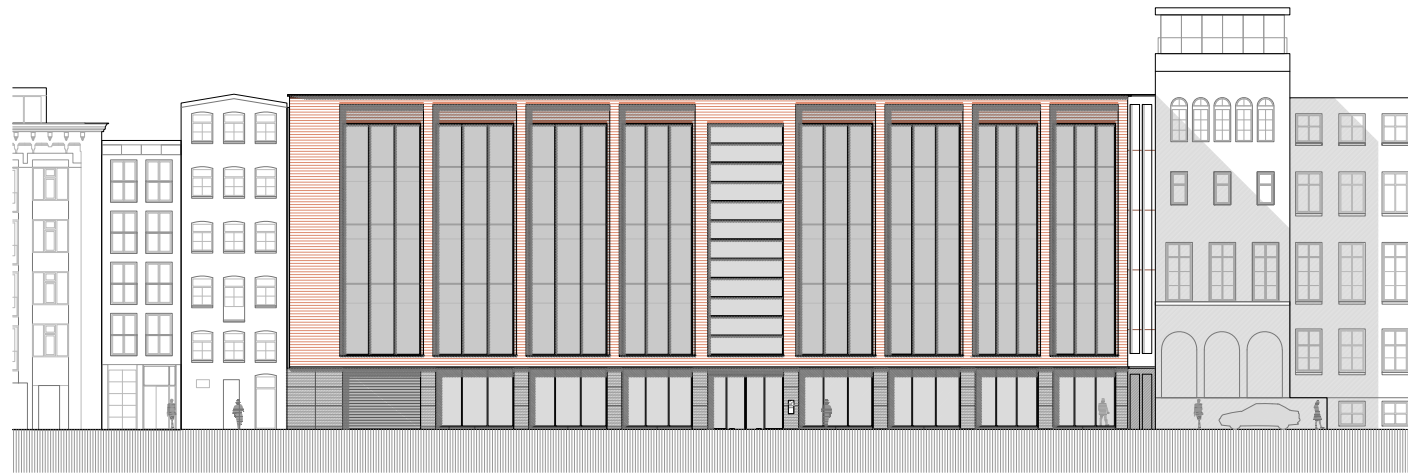










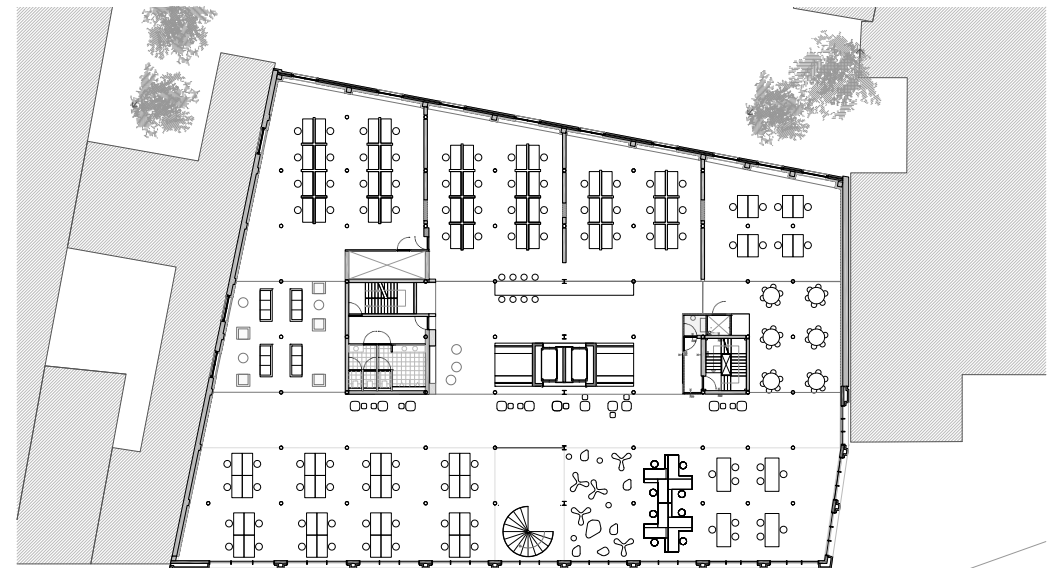


North elevation

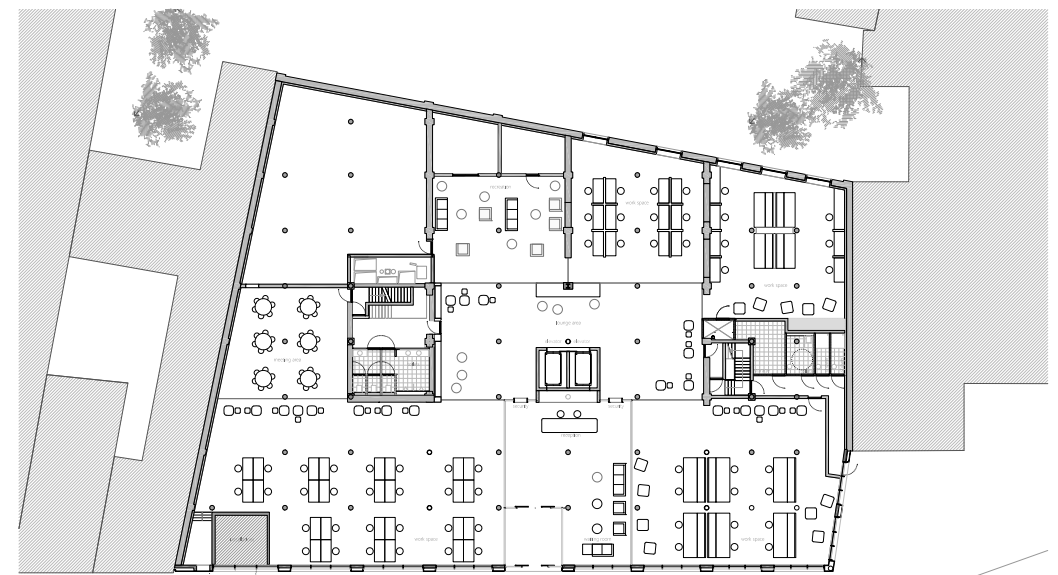


West elevation

Elevations



First floor



Ground floor

Floor plans



**Offices for Oracle headquarters in an old warehouse 'Nieuwevaart',  
Amsterdam, Netherlands**

**MAIN DATA**

Client: APF International, Oracle  
Address: Nieuwvaart 5-9, Amsterdam, Netherlands  
Type: Offices, Transformation  
Status: Built

**DATAS**

Competition: -  
Design of project: 2016  
Construction: 2016-2017  
Implementation: 2018

**SURFACES**

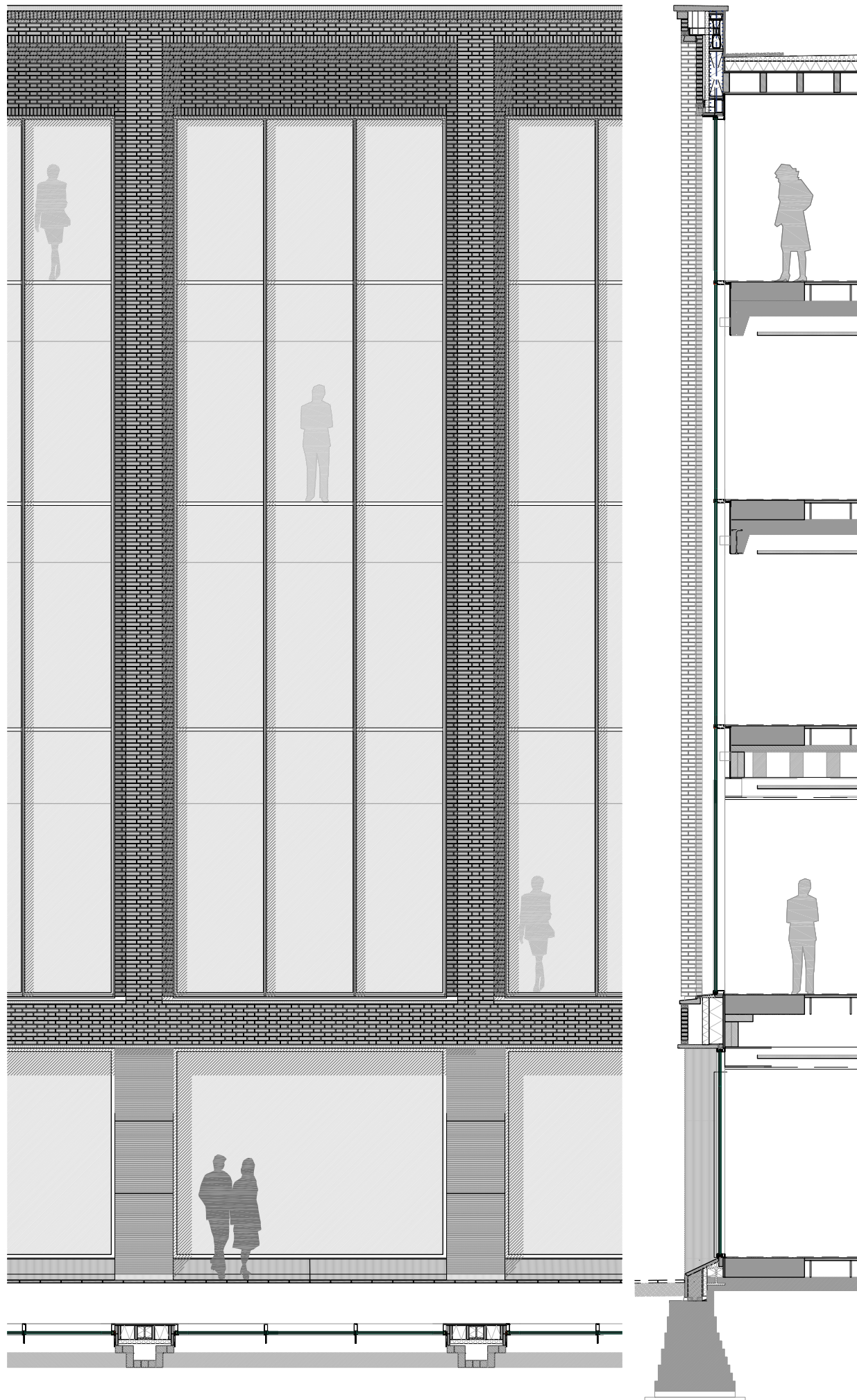
Site: 1.460 m<sup>2</sup>  
Main building: 7.273 m<sup>2</sup> - Offices  
Other buildings: -  
TOTAL: 7.273 m<sup>2</sup>

**PROJECT TEAM**

Main Architect: Cruz y Ortiz Arquitectos  
Collaborators: Muriel Huisman, Hugo Bolté, Óscar García de la Cámara  
Local Architect: -  
Interior design: CBRE  
Lighting design: -  
Landscape architect: -  
Restoration architect: -  
Digital imaging: Poliedro  
Model: -  
Photography: Ewout Huibers, Bert Rietberg  
Structural engineering: Ingenieursbureau List  
Climate engineer: Terberg  
Building physics advisor: DGMR  
Fire safety specialist: DGMR  
Health and Safety: -  
Urban planning: -  
Survey: Arjen Joustra  
Brands/Products: Schüco/Window frames, Alucobond/Façade, Rheinzink/Roof, Jansen/Atrium window frames, Stosilent/False ceiling atrium  
Site control: CBB Arnhem  
Contractors: Goosen te Pas Bouw

**AWARDS**

-



Structural Section