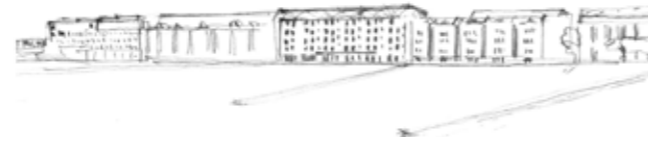


Coworking offices in the old warehouse
'Y-Point'



Amsterdam, Netherlands

Publication's title: Coworking offices in the old warehouse
'Y-Point', Amsterdam
Typology: Offices, Transformation, Interior Design
Client: APF, International
Surface: 7.890 m2
Year: 2019
Status: In progress

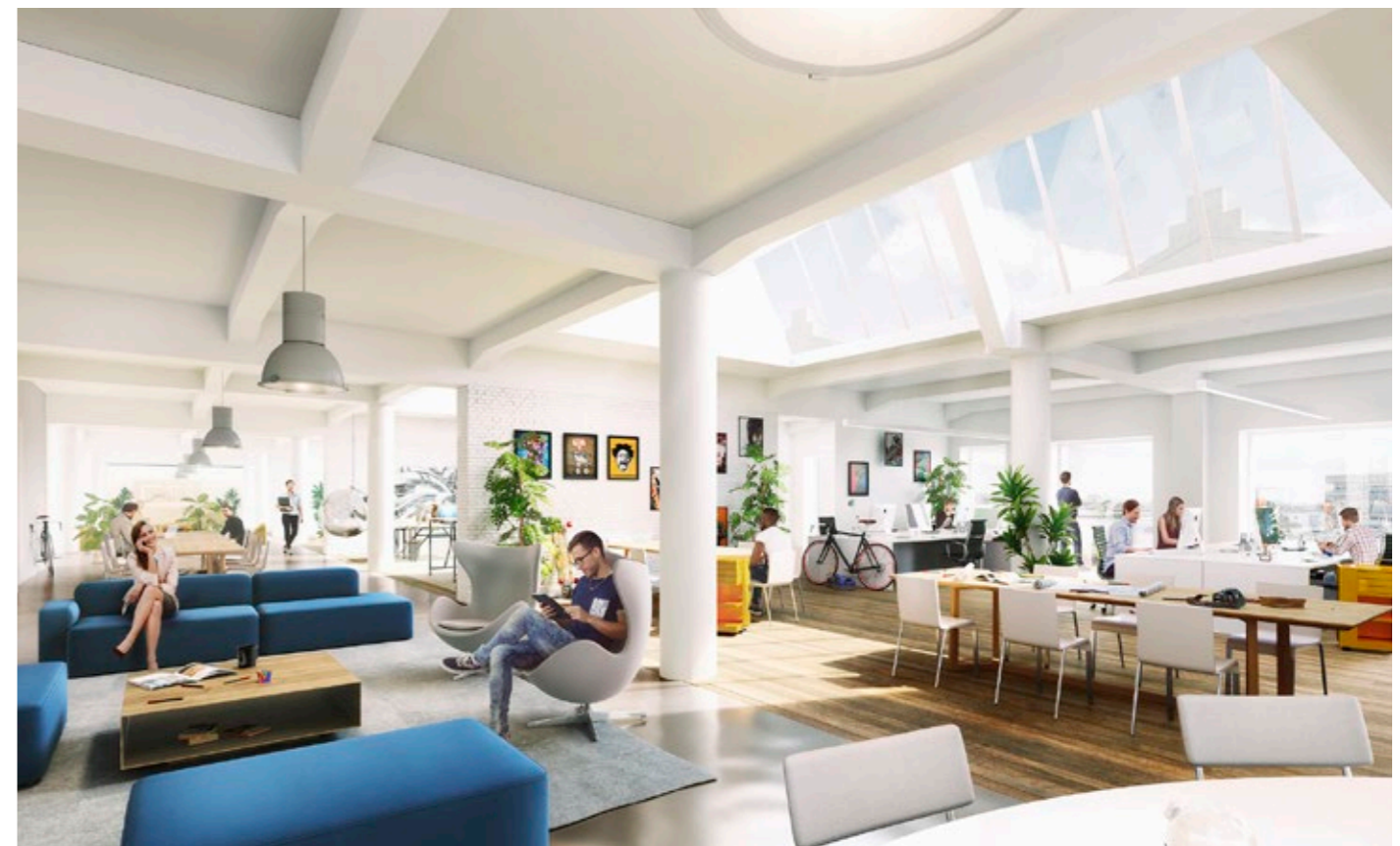


REPORT

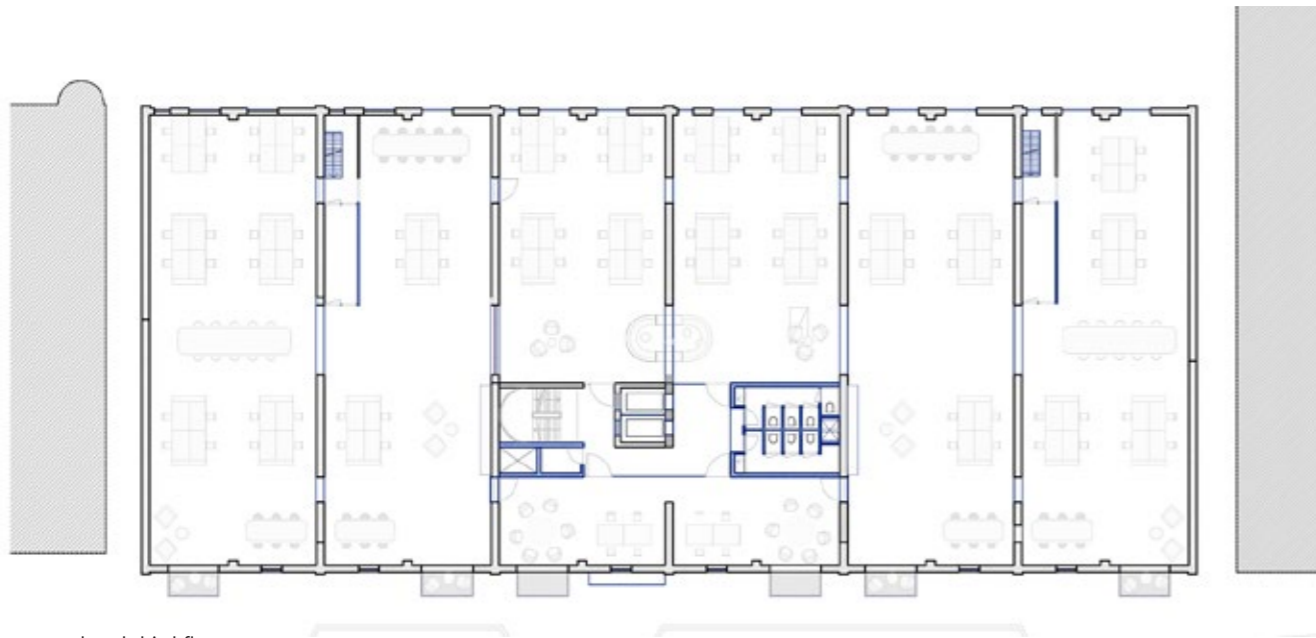
'Y-Point' is a refurbished, yet typical, warehouse built in 1914 with a prominent and promising location along the Amsterdam Houthavens, currently in use as multi-tenant office. The building however, looks outdated; mainly caused by the bay windows, otherwise by the particular tenant situation, without a clear cause or 'unity.' The relation between street side and waterside is blocked by the building itself; the attraction towards the water that could appear if walls are opened is tangible and seductive. With all these figures, this building seems to have all potentials to have an attractive upgrade on this prominent and exclusive position along the IJ.

Y-Point firstly is about re-inventing and re-branding. Redesigning the bay windows is the first solution in this mission. We furthermore believe this should be generated by an appealing lounge that connects city with river. This common space will service employees and neighbours as a trending canteen serving both target groups.

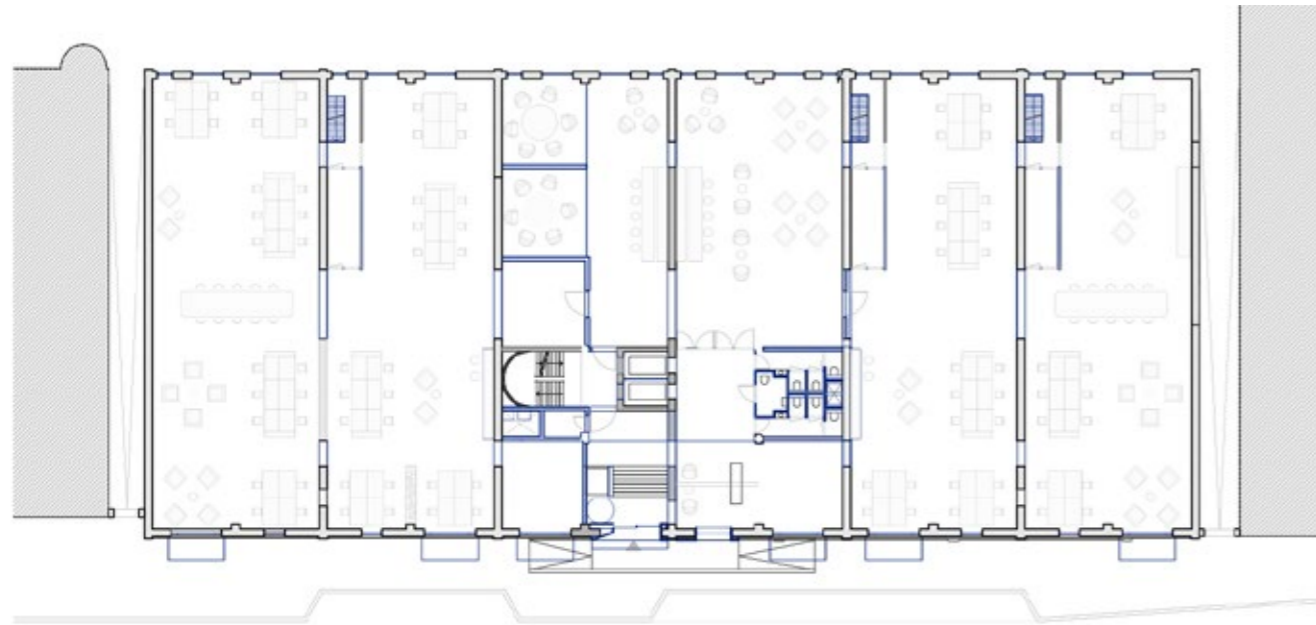
Y-Point secondly is about improving the conditions and efficiency in the working areas with a maximum relation between the front and the back and a flow of spaces along the partition walls of each individual building segment.



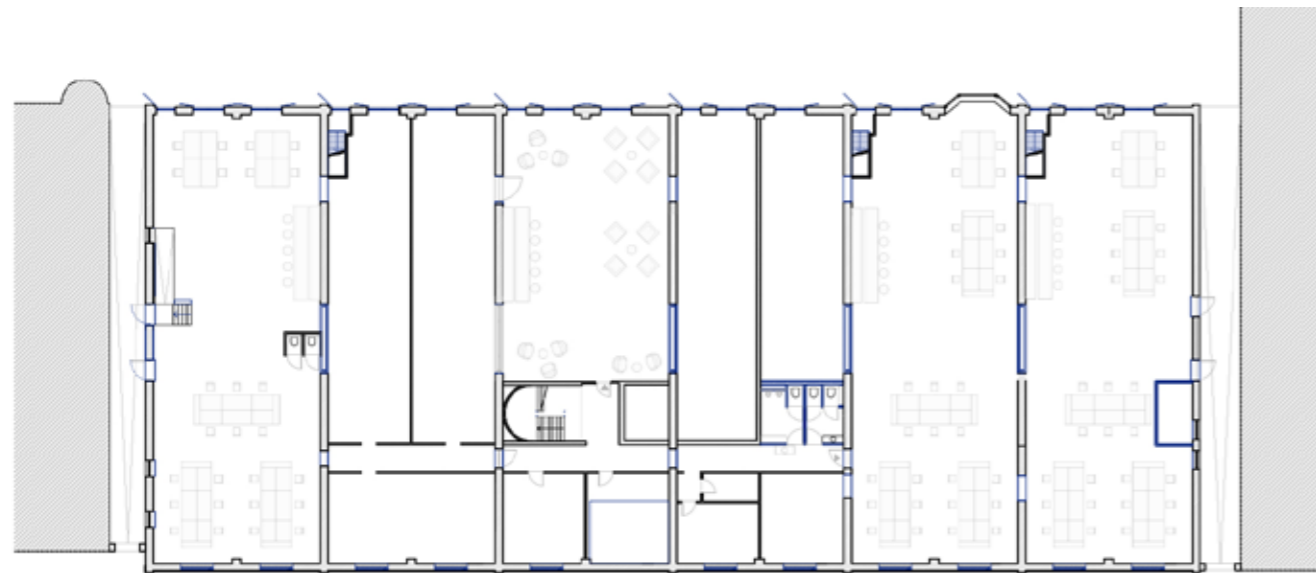




First, second and third floor



Ground floor



Souterrain plan

Floor plans



West elevation

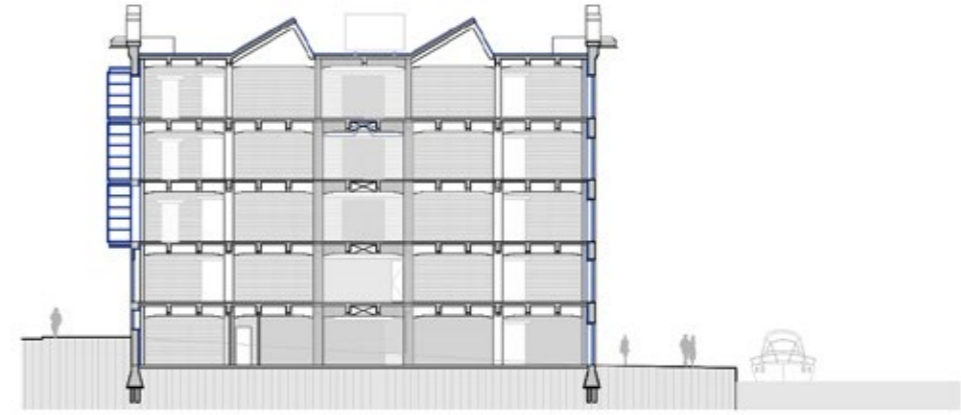


South elevation

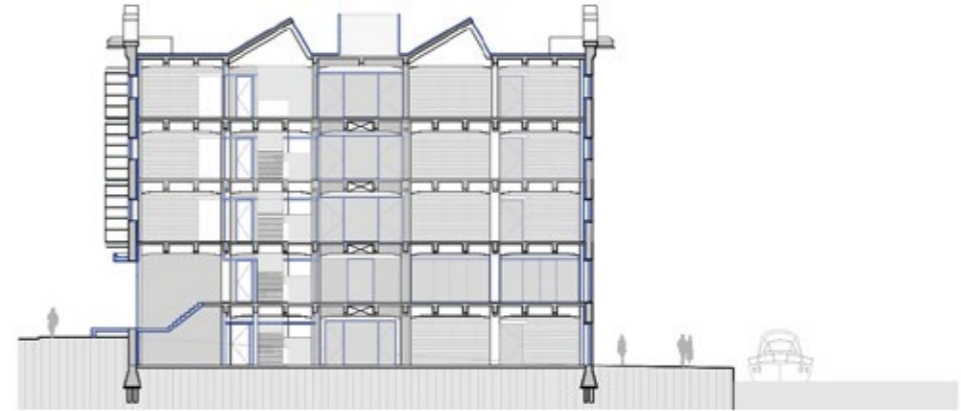


North elevation

Elevations



Cross section

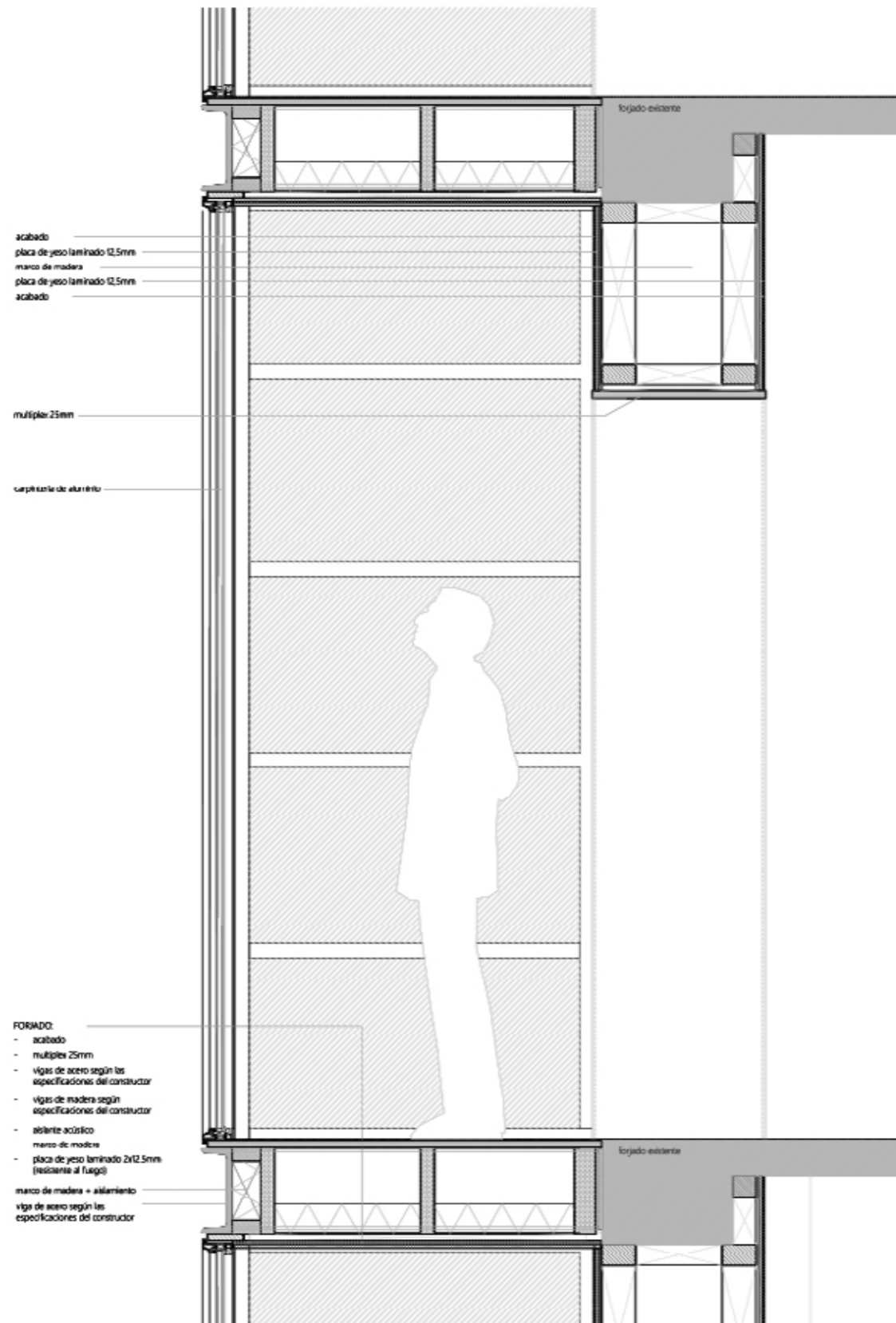


Cross section



Longitudinal section

Coworking offices in the old warehouse 'Y-Point', Amsterdam, Netherlands



Structural Section

MAIN DATA

Client: APM, International
Address: Van Diemenstraat 32, Amsterdam, Netherlands
Type: Offices, Transformation, Interior Design
Status: In progress

DATAS

Competition: 2016
Design of project: 2017-2018
Construction: 2018-2019
Implementation: -

SURFACES

Site: 1580 m²
Main building: 7890 m²
Other buildings: -
TOTAL: 7890 m²

PROJECT TEAM

Main Architect: Cruz y Ortiz Arquitectos
Collaborators: Muriel Huisman, Hugo Bolté, Óscar García, Miguel de la Torre, Lieke Robben, Álvaro de Pascual
Local Architect: Cruz y Ortiz Arquitectos
Interior design: Cruz y Ortiz Arquitectos
Lighting design: Cruz y Ortiz Arquitectos
Landscape architect: -
Restoration architect: Cruz y Ortiz Arquitectos
Digital imaging: Absent matter
Model: -
Photography: -
Structural engineering: List
Climate engineer: Linssen
Building physics advisor: DGMR
Fire safety specialist: DGMR
Health and Safety: -
Urban planning: Cruz y Ortiz Arquitectos
Survey: Joustra Management
Site control: -
Brand/ Product: -
Contractors: Dura Vermeer