

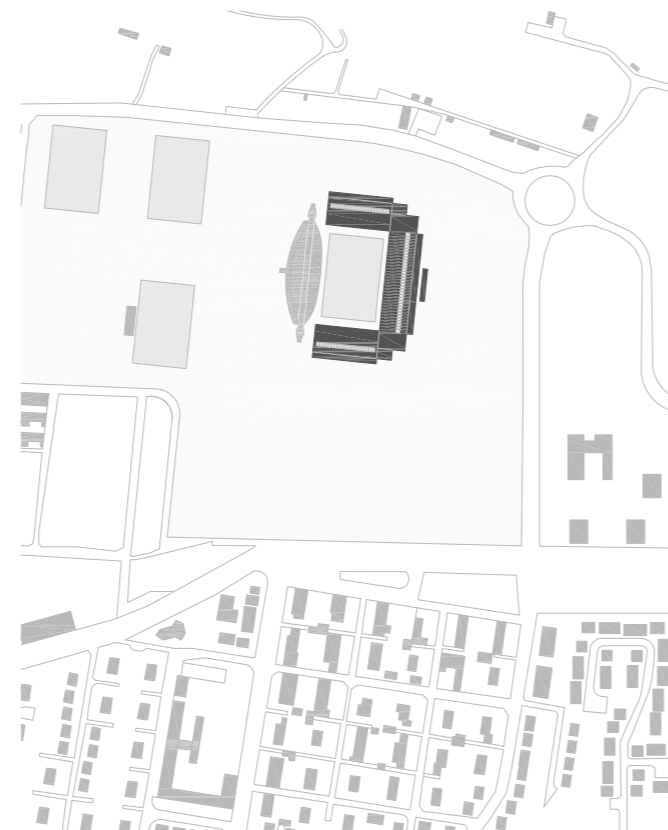
'Gabriel Montpied' football stadium for  
Clermont Foot Club



Clermont-Ferrand, France



Publication's title: 'Gabriel Montpied' football stadium for  
Clermont Foot Club, Clermont-Ferrand  
Typology: Sports and leisure, Transformation  
Client: Gabriel Montpied Stadium  
Surface: 21.200 m<sup>2</sup>, 30.000 spectators  
Year: 2019  
Status: Competition. Finalists



REPORT

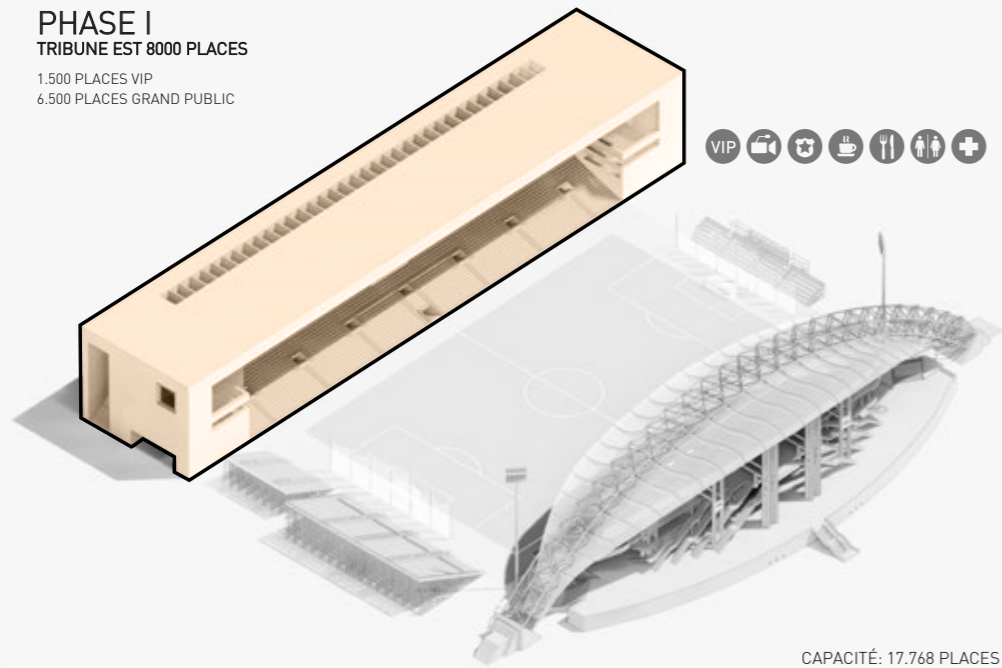
The current stands of the Gabriel Montpied stadium is not too large building (just over 6,000 spectators) but with a great formal ambition. The building uses an obvious exhibition, both of the public's circulation and its structure, finishing off with the structurally more expressive form, the arch. We are thus facing an iconic and very autonomous piece, which does not help to conceive its extension.

The proposed intervention is intended to act in contrast to the existing grandstands and avoid entering into competition with it. Thus, in contrast to the aforementioned exhibitionism, a certain structural hermeticism will be used as well as other resources: the lintel (sometimes apparent) facing the arch and a rectilinear and Cartesian geometry facing the curved forms.

The process will continue in the second and third phases, the South and North stands, which will adopt a similar geometry and a height as low as the visuals allow. Both bleachers thus approach that of the Gergovie stand without thereby entering into conflict or competition with it.

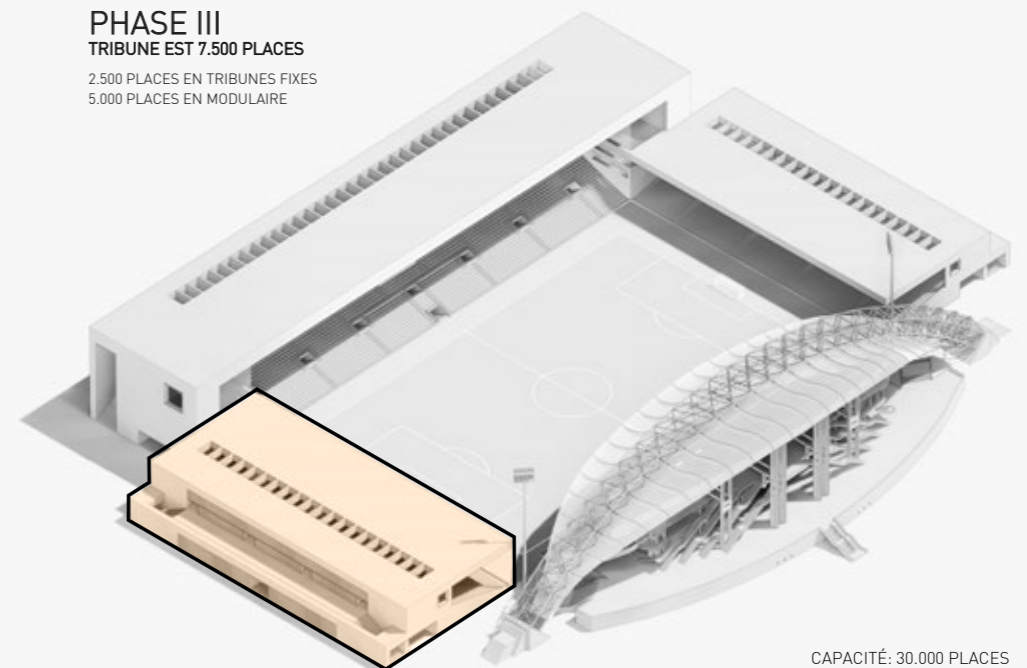
Within the same strategy of action, it is proposed to cover the new buildings with perforated and folded aluminum sheet, aiming for a monochrome and elegant result. The cladding, through its reflections, will contribute to a certain dematerialization and maintain a general attitude of low profile that avoids confrontation with the current stands.

**PHASE I**  
**TRIBUNE EST 8000 PLACES**  
 1.500 PLACES VIP  
 6.500 PLACES GRAND PUBLIC



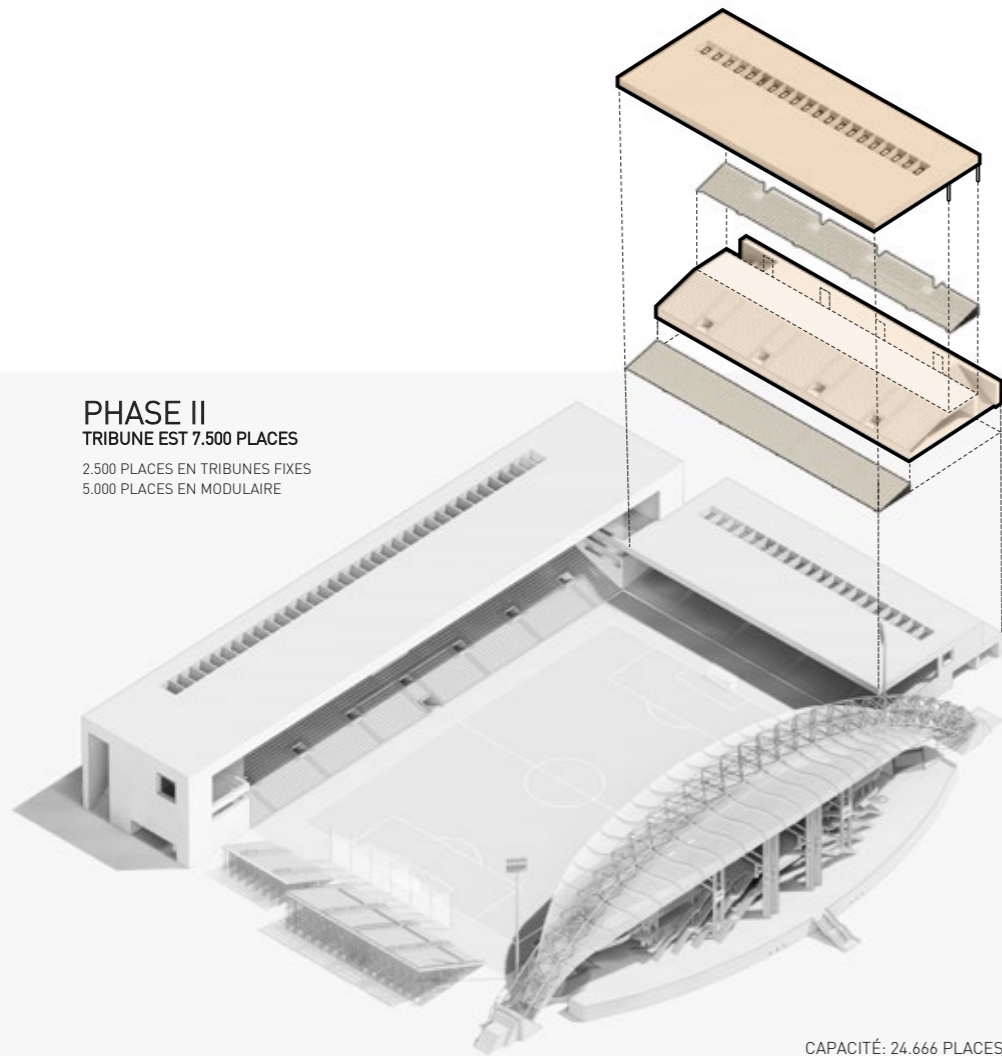
CAPACITÉ: 17.768 PLACES

**PHASE III**  
**TRIBUNE EST 7.500 PLACES**  
 2.500 PLACES EN TRIBUNES FIXES  
 5.000 PLACES EN MODULAIRE



CAPACITÉ: 30.000 PLACES

**PHASE II**  
**TRIBUNE EST 7.500 PLACES**  
 2.500 PLACES EN TRIBUNES FIXES  
 5.000 PLACES EN MODULAIRE



TOITURE

TRIBUNES DÉMONTABLES  
 2.500 PLACES

TRIBUNES FIXES  
 SERVICES, BUQUETTES,  
 SANITAIRES, 2.500 P.



TRIBUNES DÉMONTABLES  
 2.500 PLACES

CAPACITÉ: 24.666 PLACES

TRIBUNE NORD

2.500 PLACES EN MODULAIRE

DÉAMBULATOIRE  
 GRADINS HAUTS

DÉAMBULATOIRE  
 GRADINS BAS

2.500 PLACES EN TRIBUNES FIXES

2.500 PLACES EN MODULAIRE

FINITION EN TÔLE D'ALUMINIUM

POUTRE EN TREILLIS

TRIBUNES MODULAIRES  
 EN STRUCTURE MÉTALLIQUE  
 DÉMONTABLE

TRIBUNES FIXES  
 EN BÉTON ARMÉ

TRIBUNE GERGOVIE

TRIBUNE EST

TRIBUNE MÉDIAS

GRAND PUBLIC  
 GRADINS HAUTS

LOGES

LOGE  
 PRÉSIDENTIELLE

TRIBUNE  
 PROTOCOLAIRE

SALONS VIP

GRAND PUBLIC  
 GRADINS BAS

POUTRE EN TREILLIS

PORTIQUES  
 EN BÉTON ARMÉ

FINITION EN TÔLE  
 D'ALUMINIUM

LOGES

DÉAMBULATOIRE  
 GRADINS HAUTS

BUQUETTES  
 STANDS

SANITAIRES

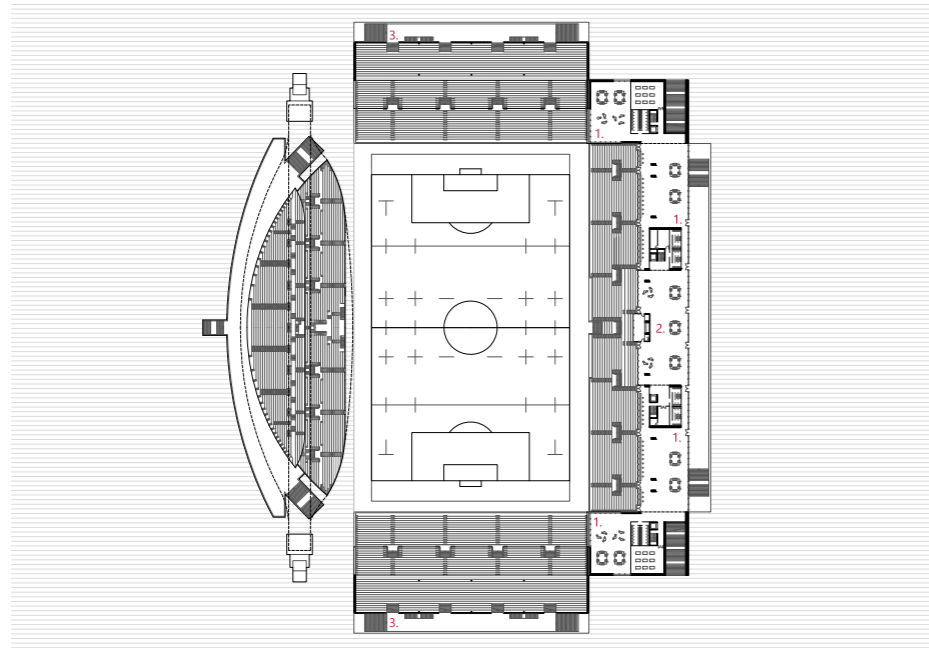
TRIBUNE SUD

DÉAMBULATOIRE  
 GRADINS HAUTS

BUQUETTES  
 STANDS

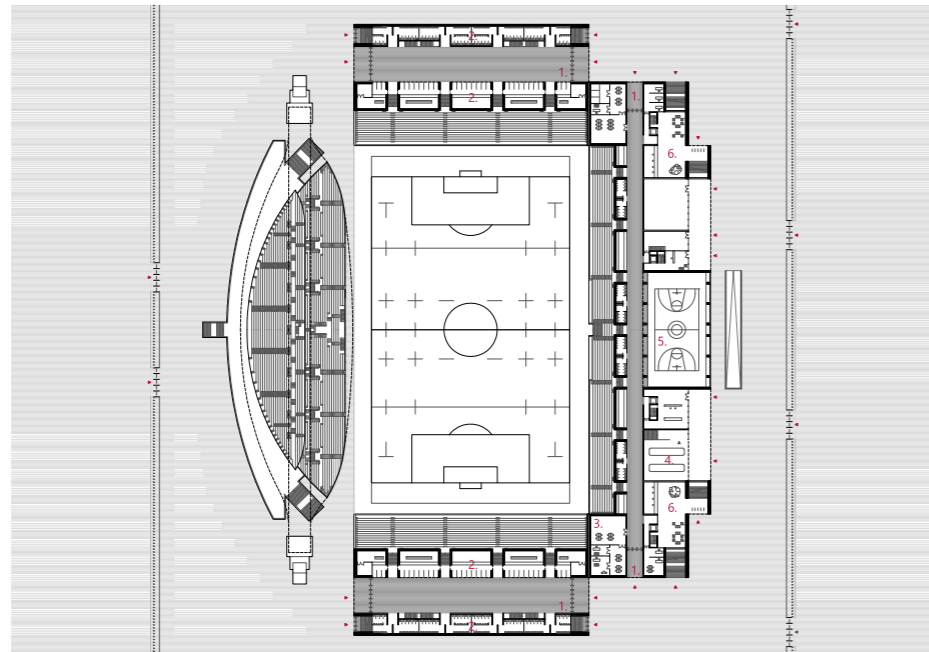
SANITAIRES

First floor



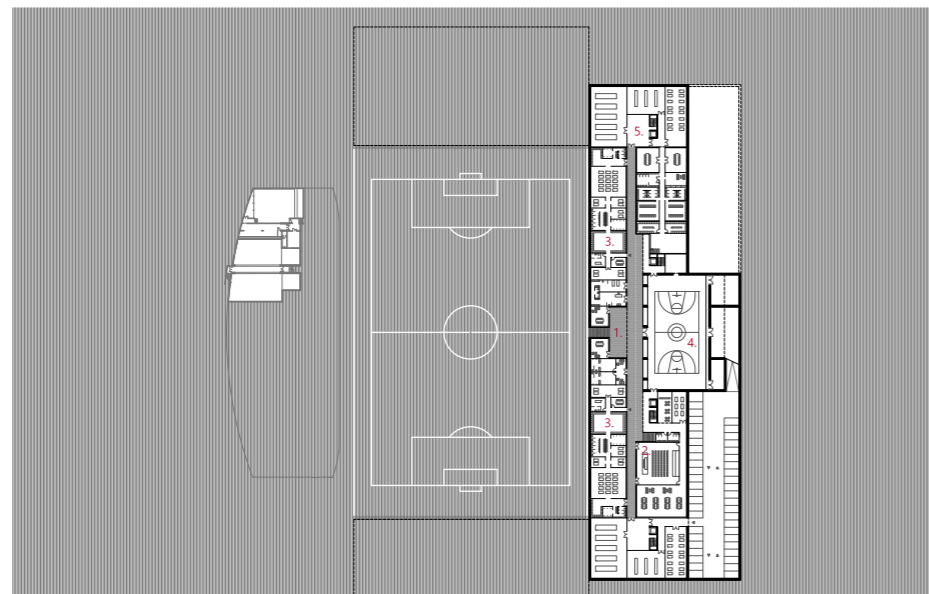
- 1. Salones VIP
- 2. Palco de Honor
- 3. Circulación Público General

Ground floor



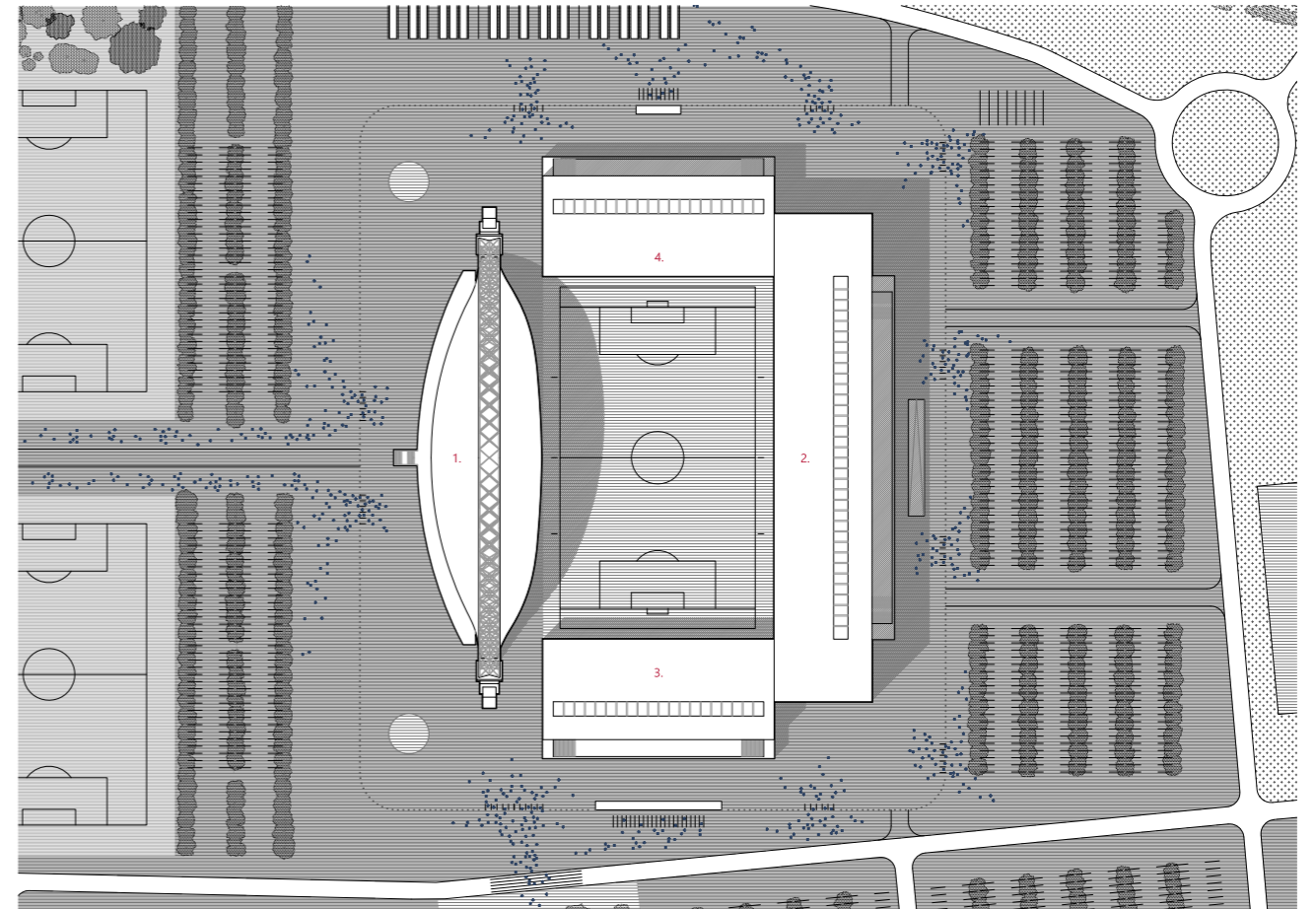
- 1. Circulación Público General
- 2. Bares y Servicios
- 3. Primer Auxilio
- 4. Accesos VIP y Futbolistas
- 5. Polideportivo
- 6. Accesos VIP

Basement floor

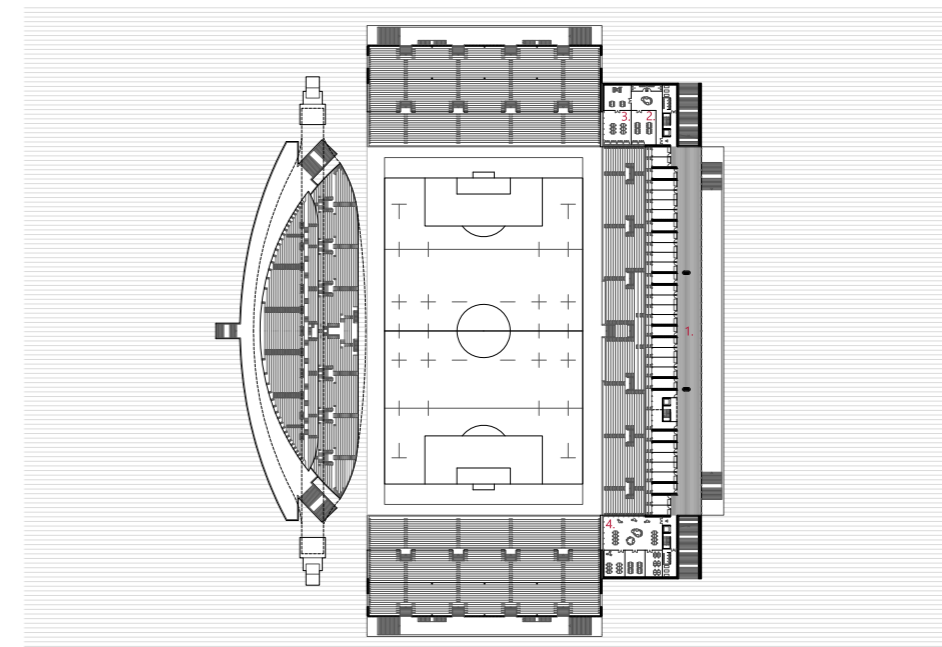


- 1. Zona Mixta
- 2. Prensa
- 3. Vestuarios
- 4. Polideportivo
- 5. Instalaciones

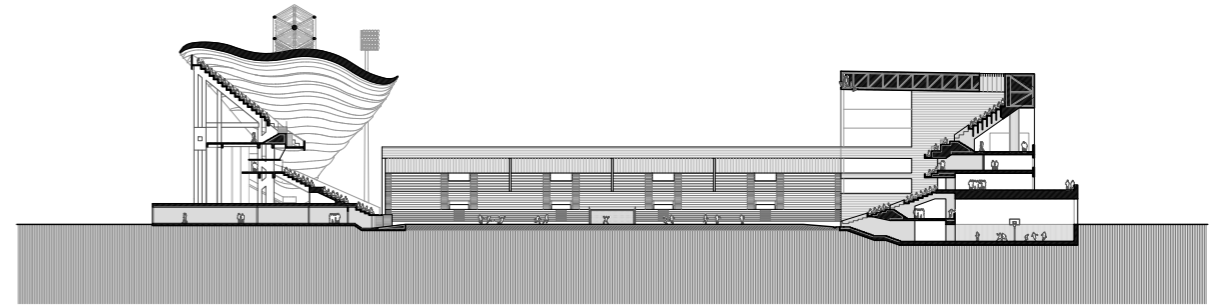
Second floor



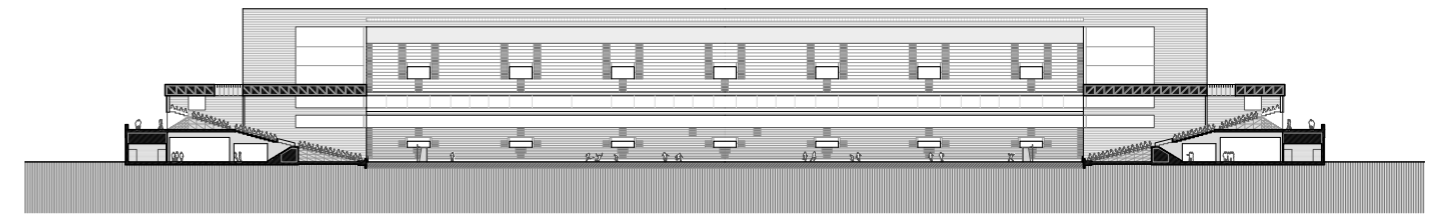
- 1. Graderío existente
- 2. Ampliación graderío Fase I
- 3. Ampliación graderío Fase II
- 4. Ampliación graderío Fase III



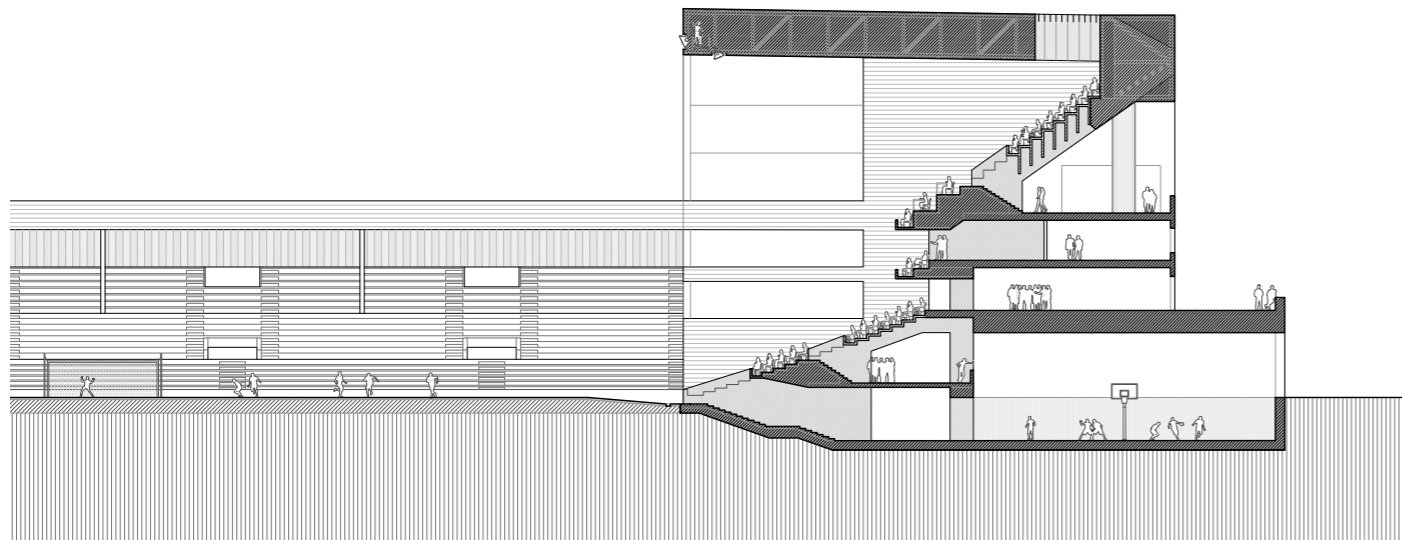
- 1. Palcos VIP
- 2. Área de control
- 3. Área de Regia
- 4. Relación VIP



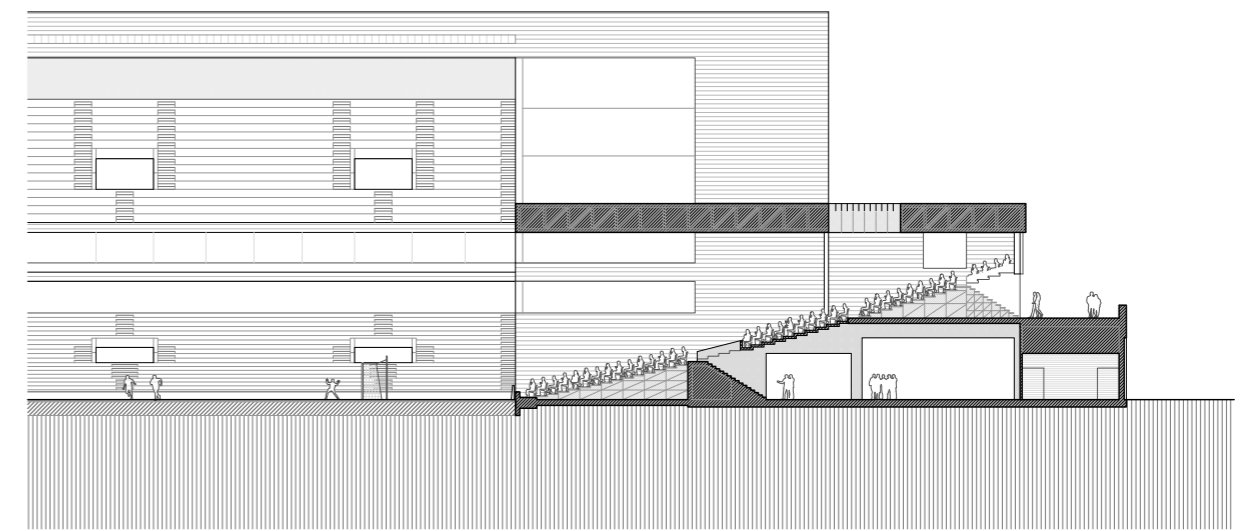
Cross section



Longitudinal section



East stand section



South stand section



**'Gabriel Montpied' football stadium for Clermont Foot Club. New stands extension, Clermont-Ferrand, France**

**MAIN DATA**

Client: Clermont Auvergne Métropole  
Address: Rue Robert Lemoy, 63100 Clermont-Ferrand, France  
Type: Sports and Leisure, Transformation  
Status: Competition. Finalists

**DATAS**

Competition: 2019  
Design of project: 2019  
Construction: -  
Implementation: -

**SURFACES**

Site: 55.000 m<sup>2</sup>  
Main building: 21.200 m<sup>2</sup> (30.000 spectators, 1.500 VIP)  
Other buildings: -  
TOTAL: 21.200m<sup>2</sup>

**PROJECT TEAM**

Main Architect: Cruz y Ortiz Arquitectos  
Collaborators: Giordano Baly, Pablo Ortiz, Fco. Javier Moreno, Oscar García  
Local Architect: -  
Interior design: -  
Lighting design: -  
Landscape architect: -  
Restoration architect: -  
Digital imaging: Prompt Collective  
Model: -  
Photography: -  
Structural engineering: OTE Ingénierie  
Climate engineer: OTE Ingénierie  
Building physics advisor: -  
Fire safety specialist: -  
Health and Safety: -  
Urban planning: -  
Survey: -  
Site control: -  
Brands / Products: -  
Contractors: -