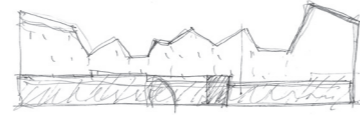


Residential row conformation 'The connection'



Arnhem, Netherlands



REPORT

Arnhem is a city along the river Rijn in the east of the Netherlands. The urban morphology of Arnhem still shows cicatrices of the World War II by a lack of cohesion between buildings and public spaces. The project's plot along the Nieuwstraat is part of a "reparation" area, where the scars can be healed and should work as a connection between the city (Trans) and the river (Rijnkade). It is also a connection between the present and the future, between the citizen and its environment.

The project proposes a building that gently overcomes this transition. With the name "La Conexión" our proposal merges the most prominent volumes at Trans and Rijnkade with a recognizable and iconic alignment of a unifying roof, under which urban villas are fit along the Nieuwstraat. The unitarian "sew-tooth" roof give place to a diversity of functions: the building volume is filled with a variety of housing typologies and commercial units. Unity and diversity are both present in one and the same object.

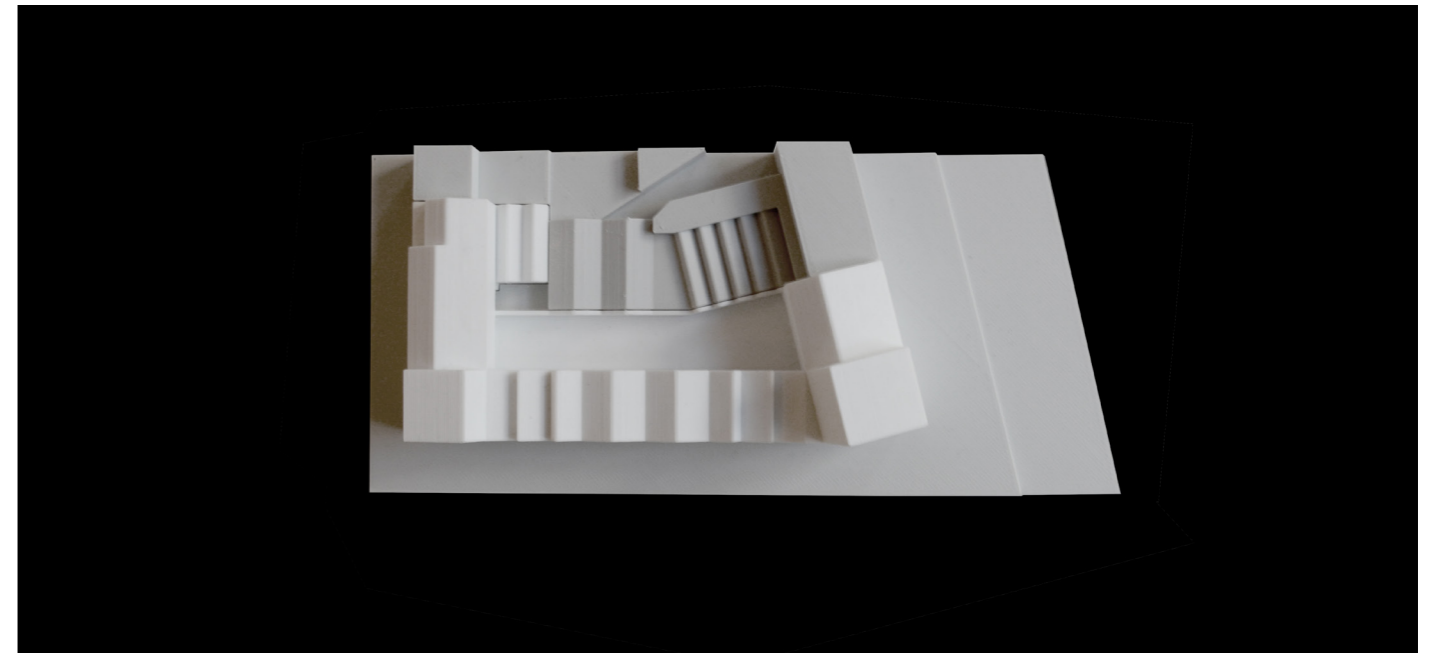
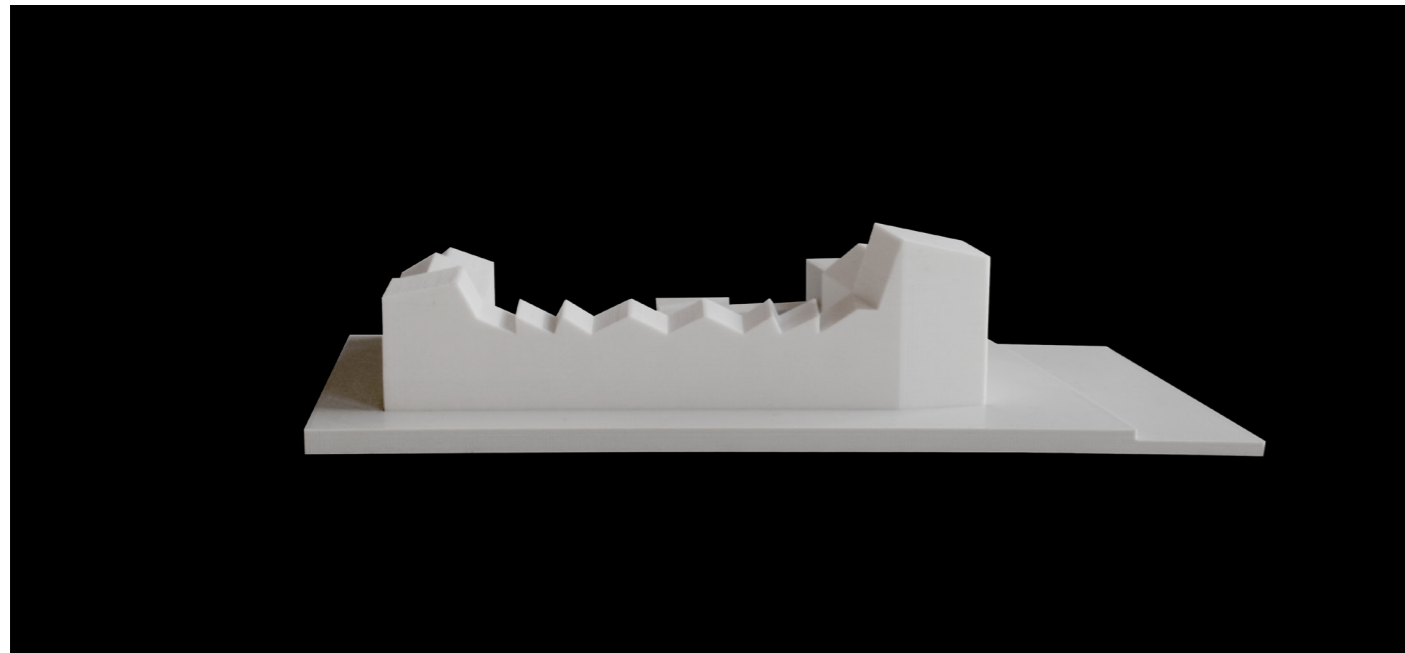
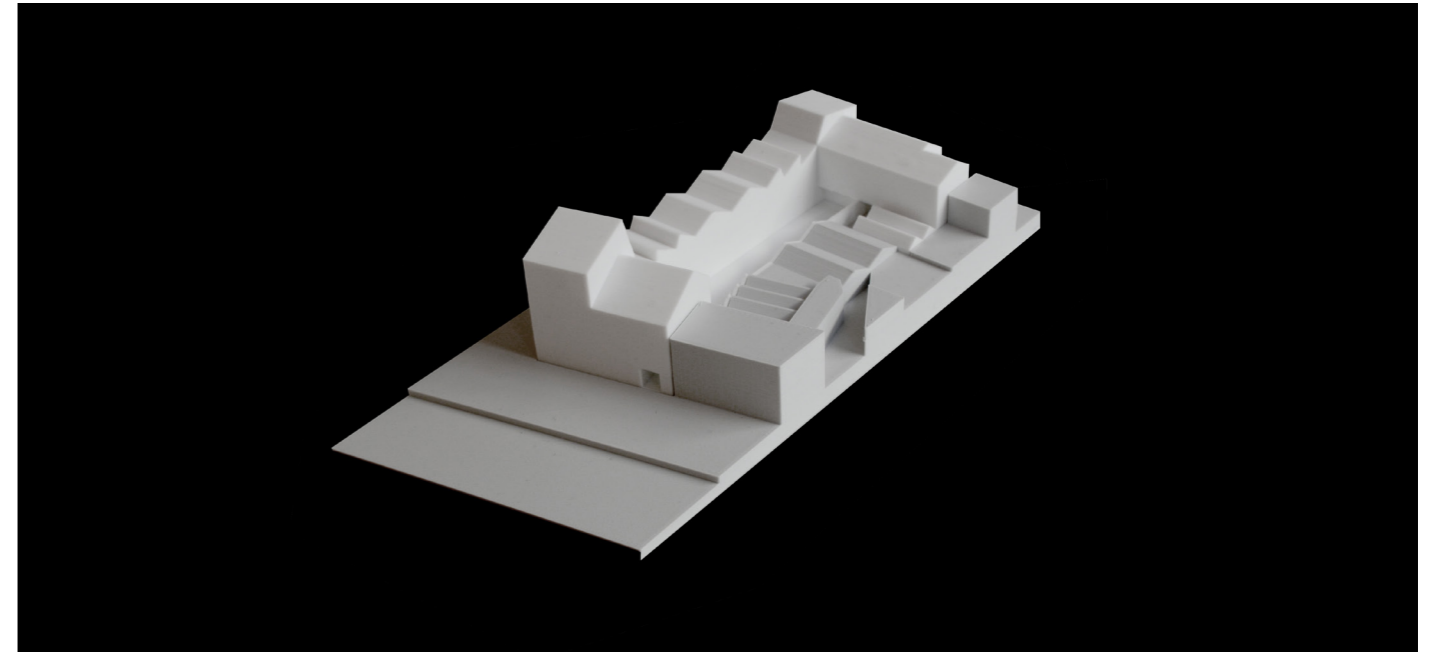
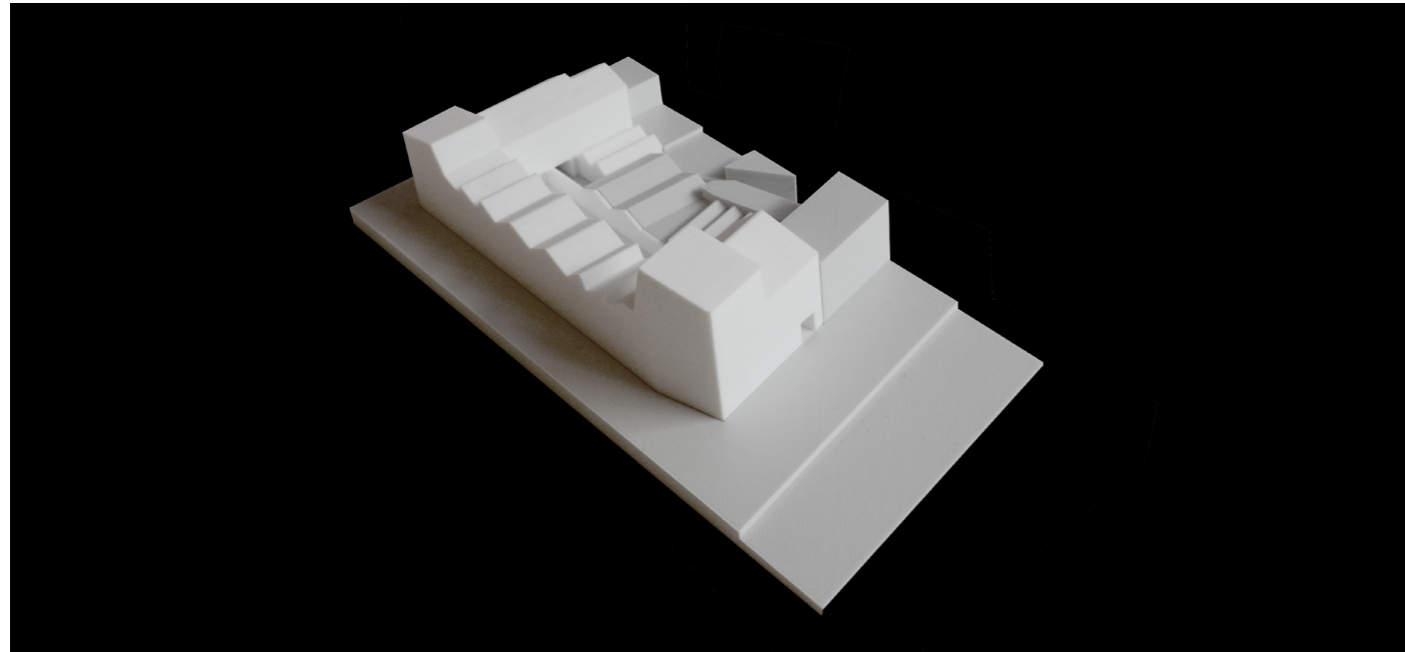
With an international point of view, we have been able to reinterpret the local architecture and introduce them in the design through its morphology (roof shape), materials (specifically brick), and personification ("stoep"). This approach guarantees a sustainable point of departure for inner city developments and give a contemporary answer on long-lasting traditional and historical customs.

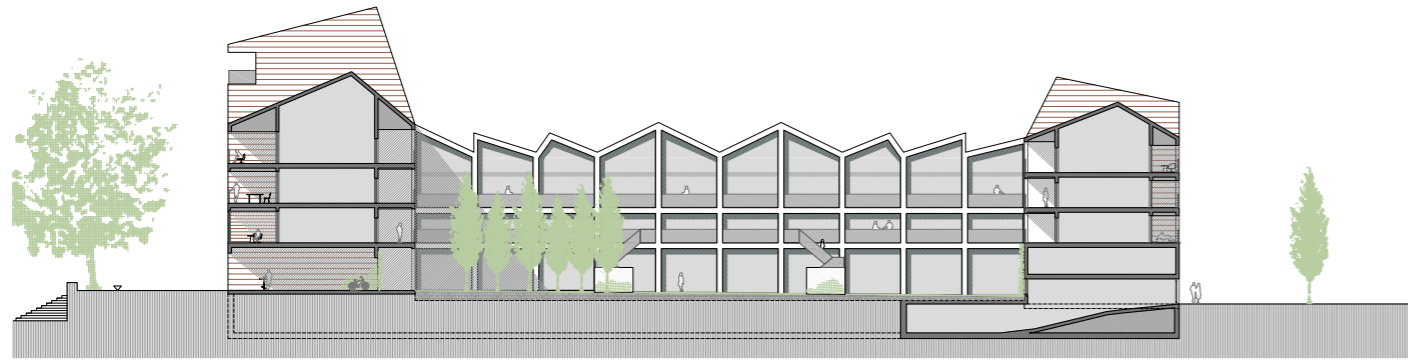
The intervention generates continuity and recognisability between the plot, the city and the river. Public space is delimited and identifiable. A secluded public garden is located at the interior of the plot and is the secret treasure for those who like to live in the inner city of Arnhem.

Publication's title: Residential row conformation 'The connection', Arnhem
Typology: Residential
Client: Stadswaarde Vastgoedontwikkeling
Surface: 5.000 m²
Year: 2018
Status: Competition. 2^o prize

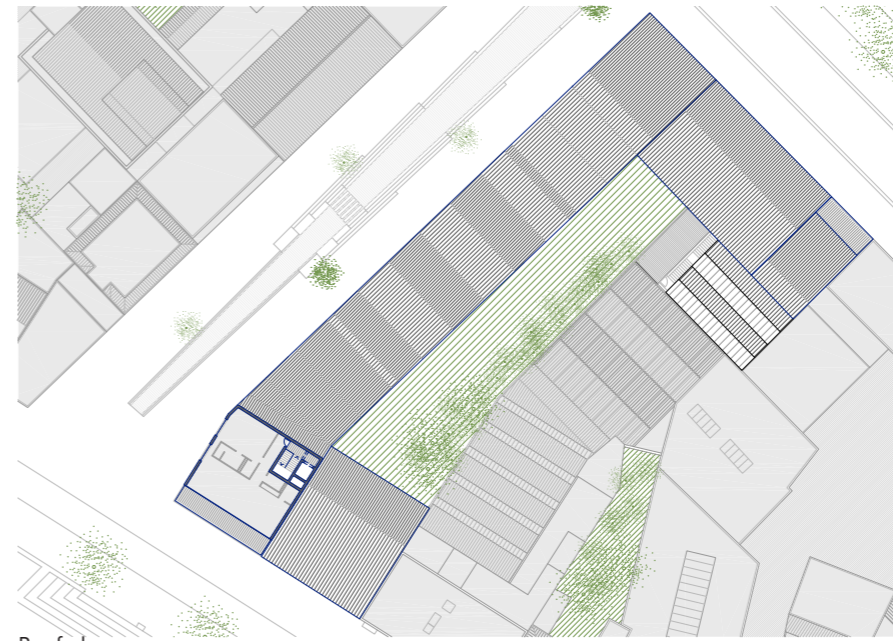








Section



Roof plan



Elevation Nieuwstraat



First floor



Elevation Rijnkade



Ground floor

Residential row conformation 'The connection', Arnhem

MAIN DATA

Client: Stadswaarde Vastgoedontwikkeling
Address: Trans – Nieuwstraat - Rijnkade, Arnhem, Netherlands
Type: Residential
Status: Competition. 2º prize

DATAS

Competition: 2018
Design of project: 2018
Construction: -
Implementation: -

SURFACES

Site: 2335 m²
Main building: 5000 m²
Other buildings: -
TOTAL: 5000 m²

PROJECT TEAM

Main Architect: Cruz y Ortiz Arquitectos
Collaborators: Muriel Huisman, Oscar García de la Cámara, Francisco Javier Moreno, Maarten Kop, Pablo Ortiz, Paul Egurrola
Local Architect: Cruz y Ortiz Arquitectos
Interior design: -
Lighting design: -
Landscape architect: Cruz y Ortiz Arquitectos
Restoration architect: -
Digital imaging: Cruz y Ortiz Arquitectos
Model: GMG 3D print
Photography: -
Structural engineering: -
Climate engineer: -
Building physics advisor: -
Fire safety specialist: -
Health and Safety: -
Urban planning: -
Survey: -
Site control: -
Brands / Products: -
Contractors: -